

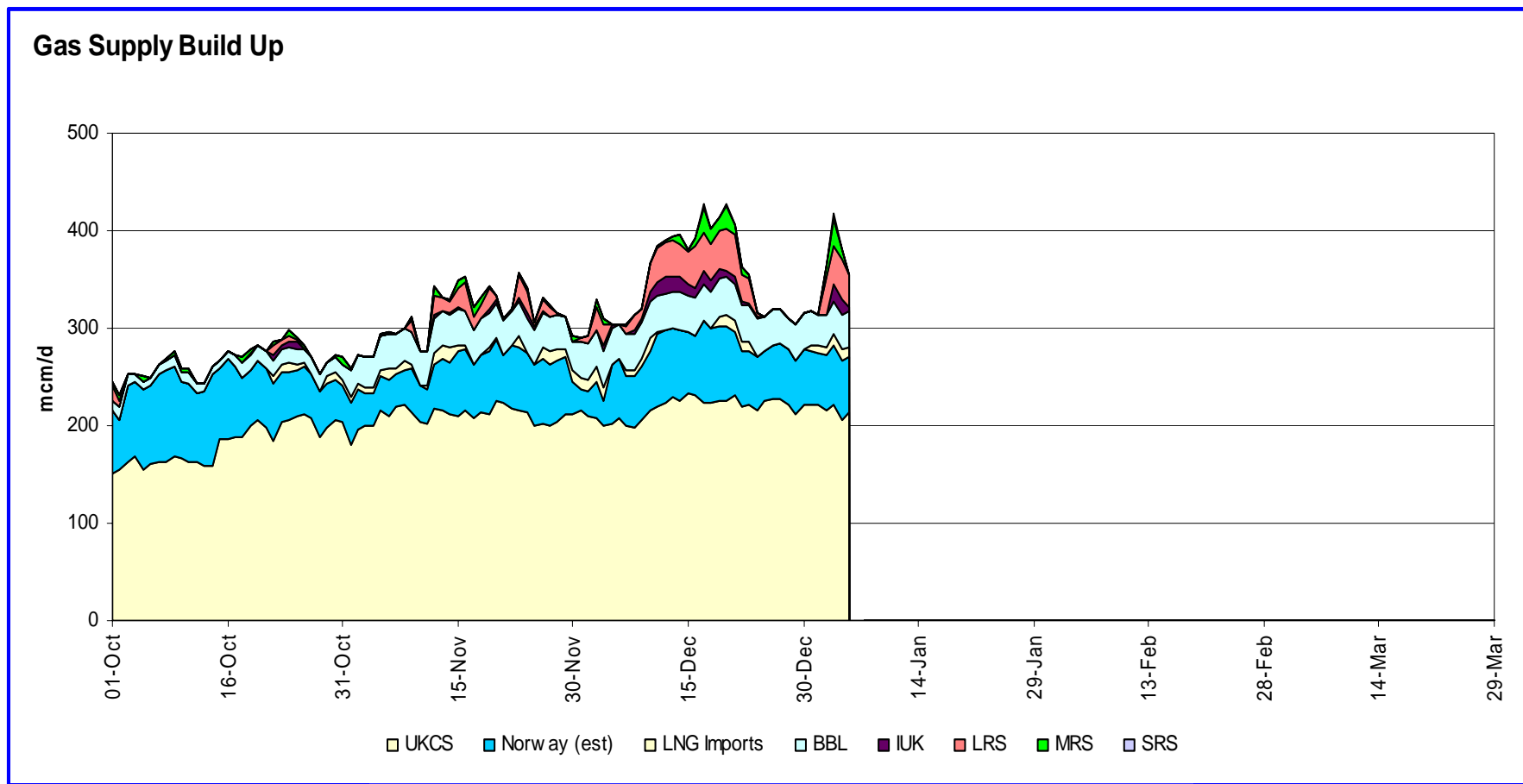
Gas Operations Winter Reporting

Monthly Web Update - January

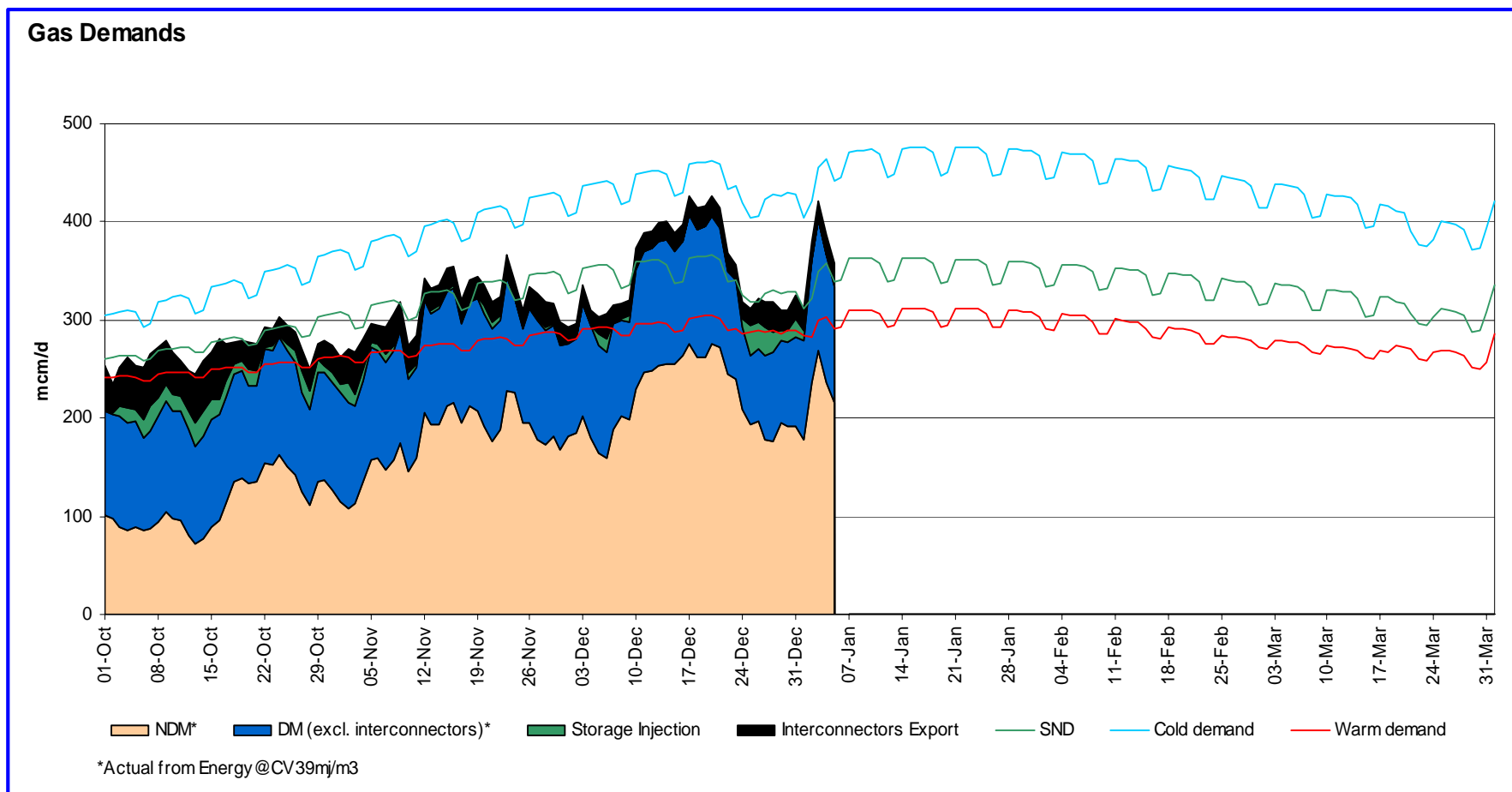
Monthly Web Update - December

- ◆ The following slides summarise the 'Gas Monthly Web Update' which can now be found under the new website area 'Operational Monthly Updates' on nationalgrid.com:
 - ◆ <http://www.nationalgrid.com/uk/Gas/OperationalInfo/monthlyupdates/>
- ◆ The following charts are available:
 - ◆ Gas Supply Build Up
 - ◆ Gas Demands (breakdown)
 - ◆ UKCS Monitor
 - ◆ Import Assessment
 - ◆ Gas Price vs Interconnector & Storage Activity
 - ◆ Updated supply assumptions table

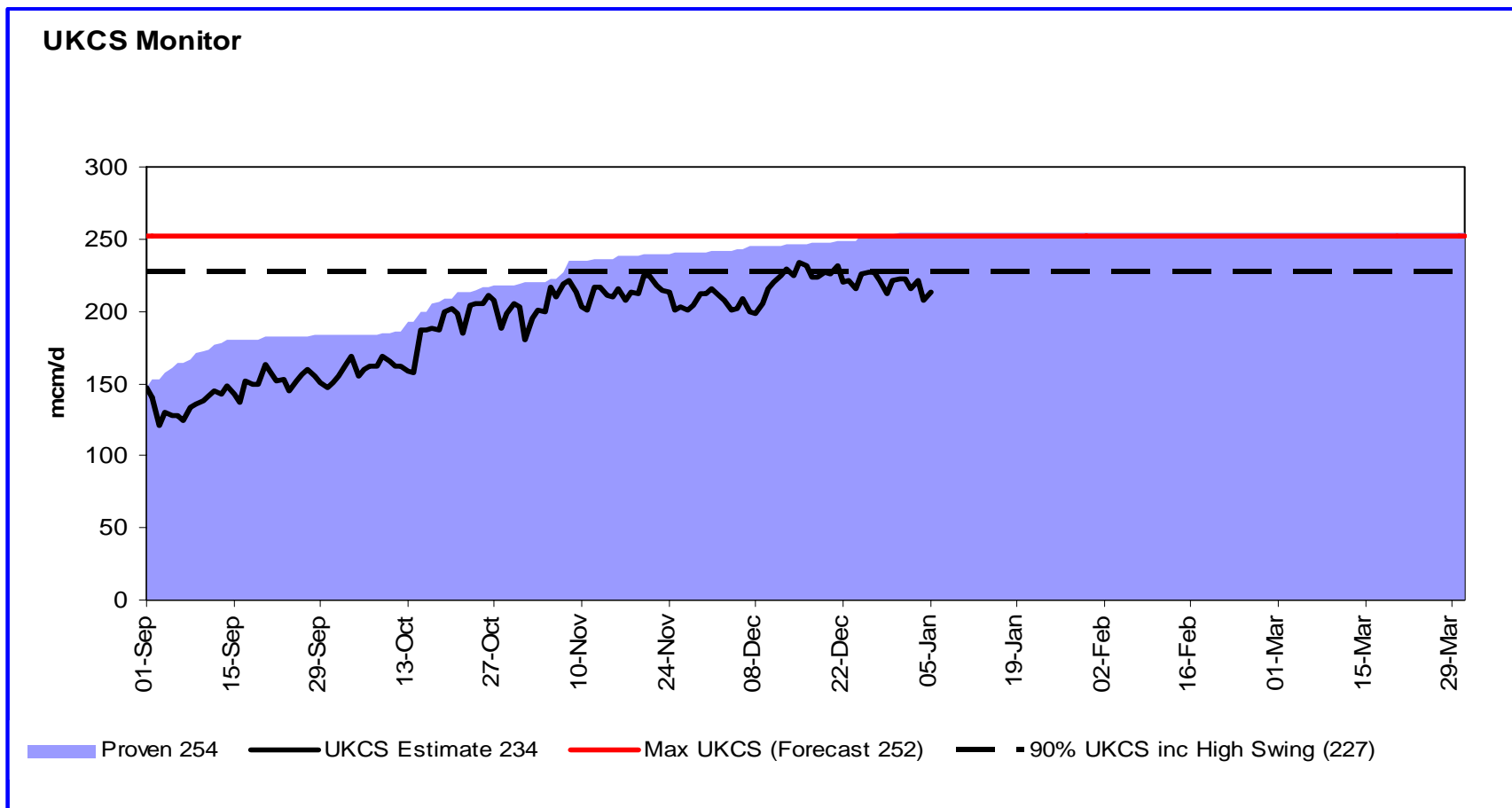
Gas Supply Build Up



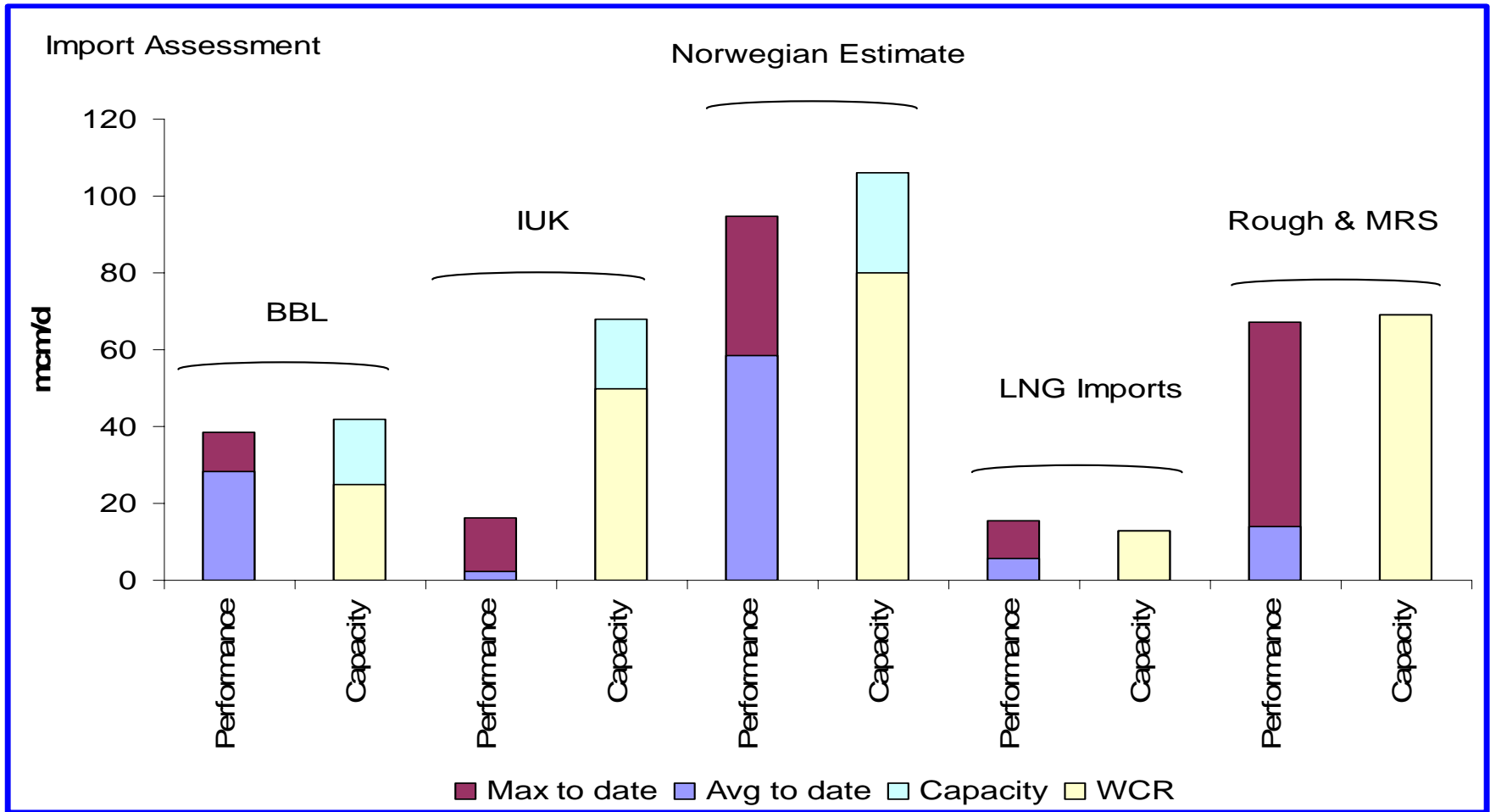
Gas Demands



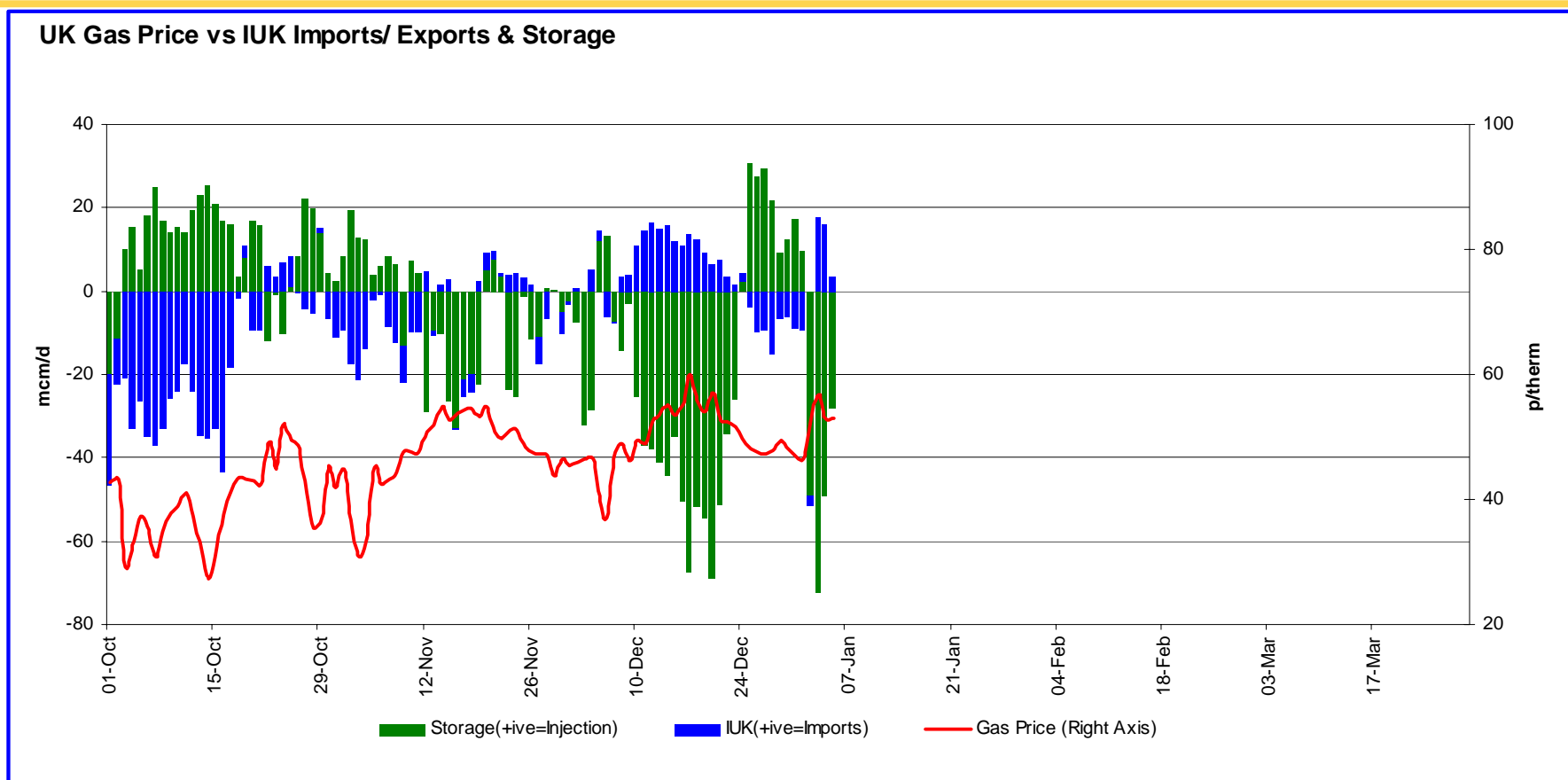
UKCS Supply Monitor



Import and Storage Assessment



Gas Price vs IUK & Storage Activity



Supply Assumptions Update

	Winter Consultation (Sept 2007)	Latest View (5/1/08)	Max to date	Comments
UKCS	227	227	234	All terminals flows broadly in line with forecast including high swing supplies at Bacton - no change to supply assumptions
Norway	80	80	95	Though forecast has been exceeded, at recent higher demands flows were in line with forecast – no change to supply assumptions
IUK	50	50	16	Flows marginally below expectation, but not required by market due to healthy supplies – no change to supply assumptions
BBL	25	25	38	Above forecast, one of the factors for lower IUK- hence no change to supply assumptions
LNG	33	13	16	Latest view excludes Milford Haven
Total Non-Storage	415	395	399	-
Supply Risk	20	0	0	Supply risk now utilised
Safety Monitor	395	395	0	-
Long Range Storage	37	42	44	Latest view for Rough increased to reflect Transfer & Trades (see below) and recent shipper auctions
Medium Range Storage	45	32	27	Latest view now excludes Aldbrough
Short Range Storage	49	49	6	Higher LNG flows still expected if higher demands are experienced
Total Storage	131	123	77	-
Other comments - Transfer & Trade has lead to higher flows at Easington with at times, lower flows at donor ASEPs.				