



Information Provision - Next Phase

nationalgrid

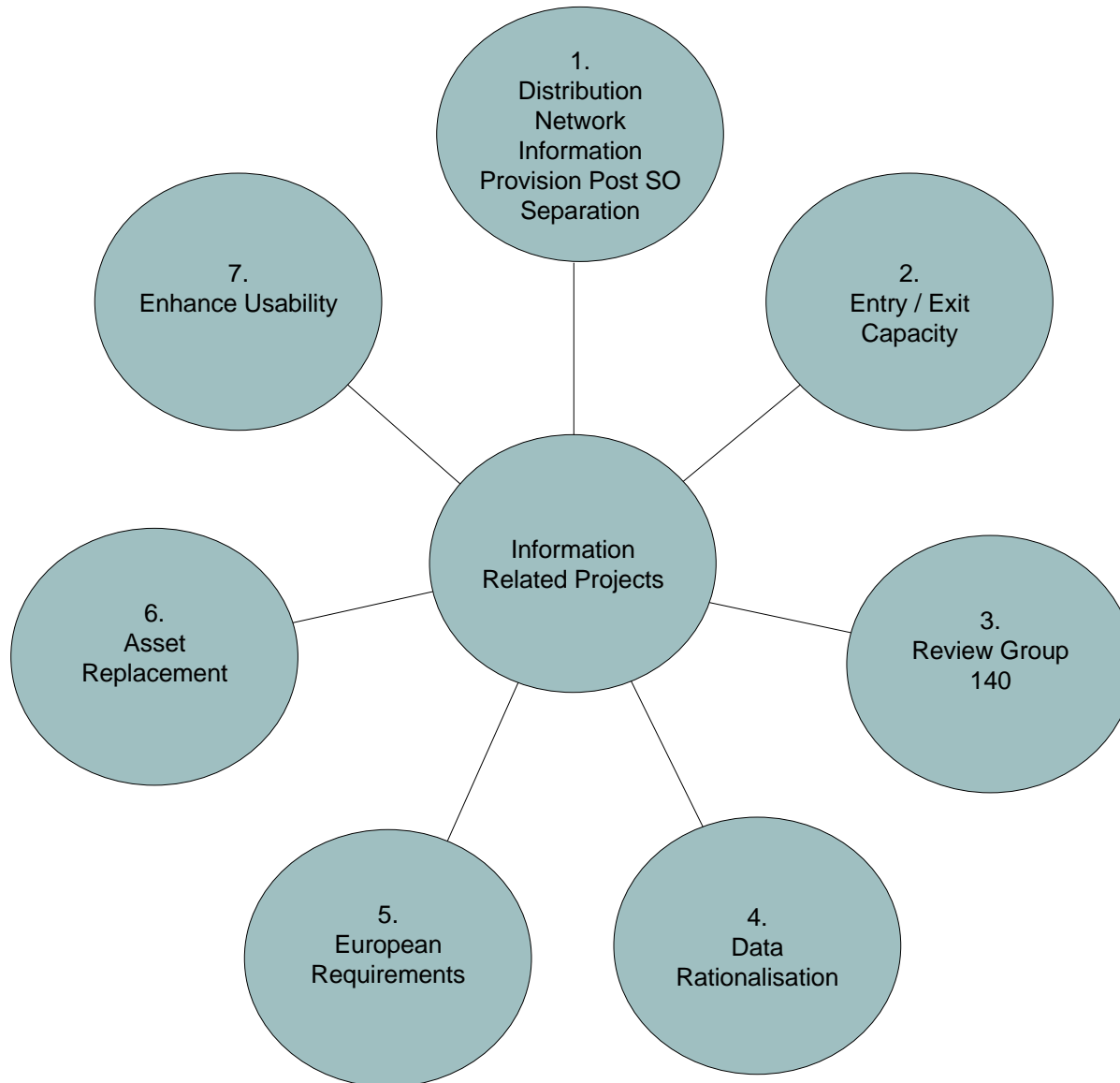
The power of action.™

Provision of Data

MIPI Phase 2 to be delivered during 2009/10

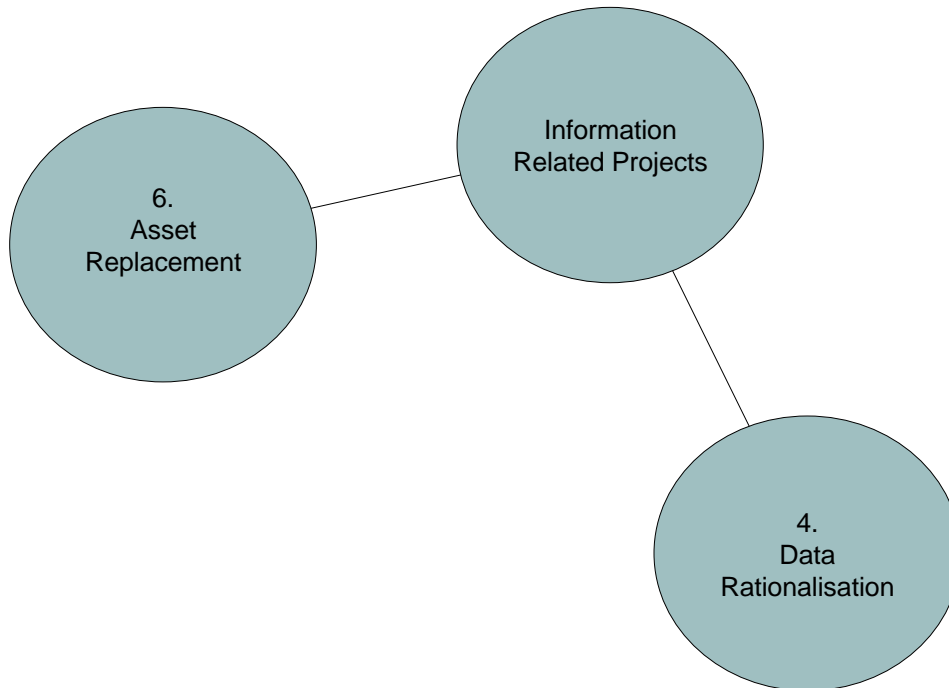
- **Aim to rationalise data and deliver via dedicated platforms**
- **All market data containing none shipper sensitive information to be published on the internet via the MIPI system**
 - Details presented at a market seminar last week and details available on the website
- **Shipper Specific Data will remain accessible via a secure subscriber mechanism (SIS)**
- **Some market data that is published through SIS and not via the web (SISR01 & SISR02 reports) to be transferred to MIPI**

MIPI Phase 2 Streams



MIPI Phase 2 Streams

**SIS data impacted by these areas
(The transfer of SISR01 and SISR02
data falls under data rationalisation)
with asset replacement impacting
remainder of shipper specific data**



Data contained within SISR01 (SS01)

SISR01

- ◆ Gas Day
- ◆ **LDZ Forecast CWV**

Forecast Composite Weather Variables

for Gas Day 01/07/2006

LDZ	CWV (Degree Celcius)
EA	17.230
EM	15.760
NE	16.080
NO	14.310
NT	17.230
NW	16.780
SC	14.810
SE	17.010
SO	16.270
SW	15.690
WM	15.890
WN	16.780
WS	17.100

Data contained within SISR02 (SS02)

SISR02

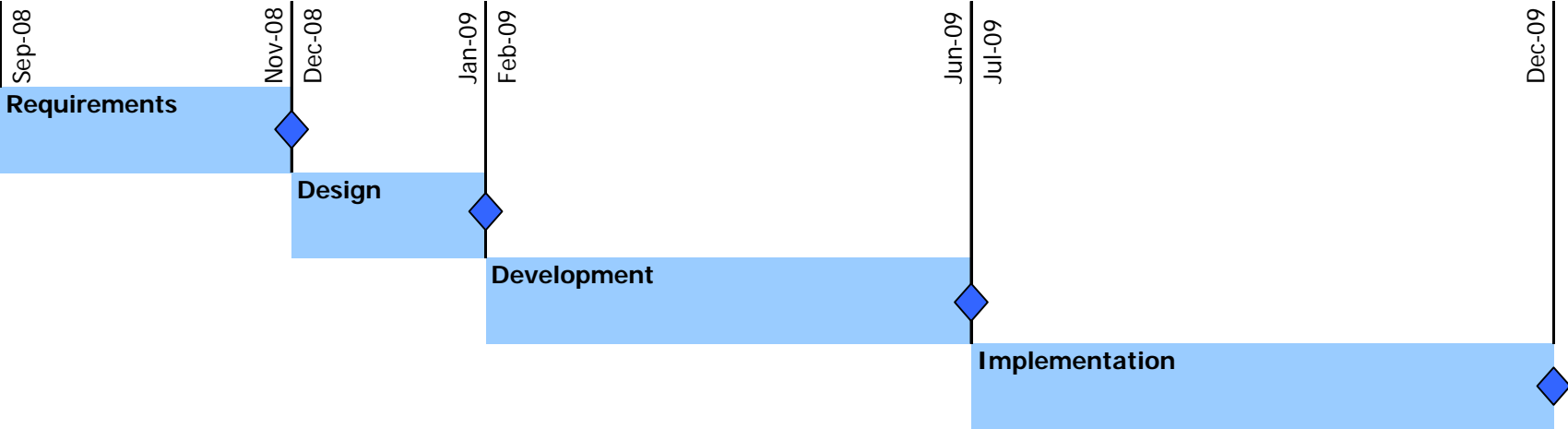
- ◆ Gas Day
- ◆ LDZ Actual Demand
- ◆ LDZ Actual CWV
- ◆ **NTS Actual Demand**

Data Item also published As Market Data via the web

Weather Variables Measured at D+1

LDZ Id	Actual Demand for the Previous Gas Day (MCM)	Actual CWV for the Previous Gas Day
NTS Throughput (Excludes Linepack)	205.15	
EA	4.05	17.230
EM	7.20	15.780
NE	4.64	16.080
NO	3.91	14.310
NT	5.30	17.230
NW	6.94	16.780
SC	5.43	14.780
SE	7.78	17.010
SO	4.00	16.270
SW	3.04	15.690
WM	3.99	15.890
WN	0.99	16.780
WS	3.51	17.100

Timeline



Asset Replacement

If we are to continue to publish our data to SIS we will need to build new interface

....but want to ensure we are only building what we need to

Require an understanding of users requirements

No reliable data available on current level of utilisation of SIS data

Do you use this data ?

We will be sending a short survey to all attendees to understand your requirements

– please take the time to fill it in

SORD01 Daily Imbalance Report
SORM02 Input Scheduling
SORM03 Output Scheduling
SORM05 Shipper Imbalance
SORM06 Daily Cashout Quantities
SORM16 Balance Financial Position
SORM24 Balancing Neutrality
SORM25 Entry Capacity Booking
SORM26 Extent of Capacity Trading
SORM31 NTS Exit Capacity Booking