

Fast Reserve

Market Information for Tenders for November 2007

National Grid publishes this information, in order to inform potential participants for the Fast Reserve tender round for November 2007.

Fast Reserve Availability

Our indicative requirement for Fast Reserve in November 2007 is shown on a Settlement Period basis in Figure 1. This requirement covers weekdays, Saturdays, Sundays and Bank Holidays.

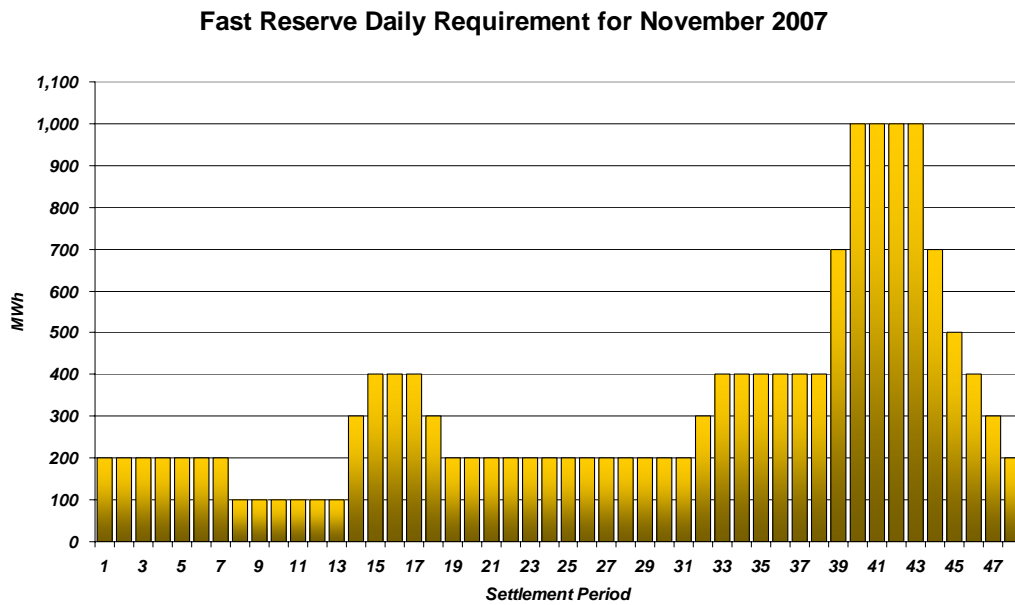


Figure 1

Figure 1 gives an indication of the times of day when Fast Reserve is most useful to National Grid. The actual amount of Fast Reserve "holding" varies from day to day, according to system conditions.

Fast Reserve Utilisation

Figure 2 shows the daily utilisation of Fast Reserve in the BM and elsewhere during August 2007 and September 2007. The BM information is based on the aggregate of Offers plus Bids accepted to provide Fast Reserve or an equivalent service.

Daily Accepted Fast Reserve Volume

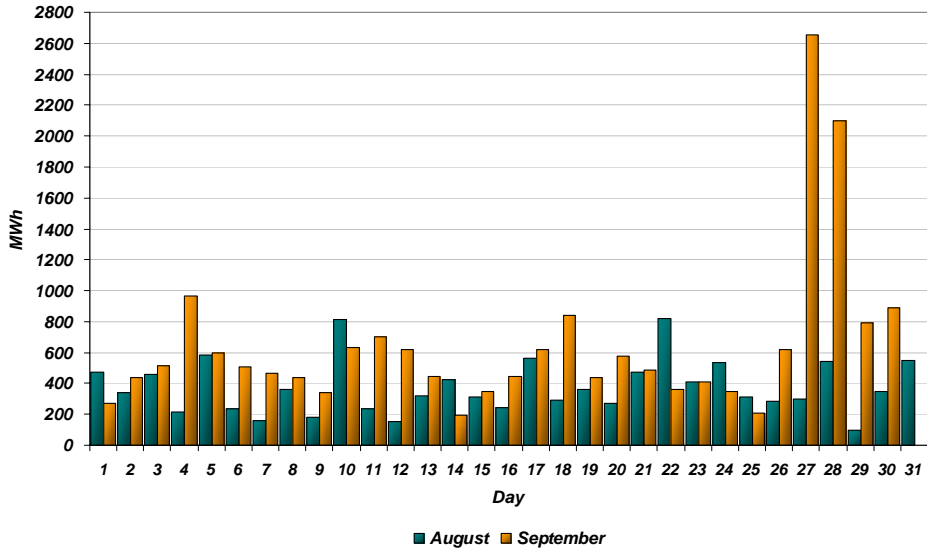


Figure 2

Figure 3 represents this data as total utilisation by Settlement Period across each month. This shows the daily profile of Fast Reserve utilisation.

Period Accepted Fast Reserve Volume

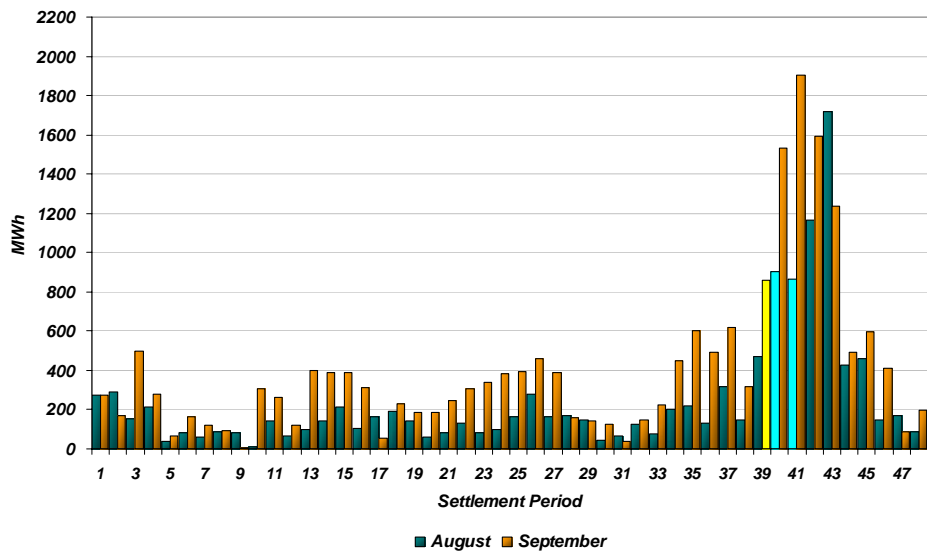


Figure 3

Figure 4 represents the same historical data, as an average utilisation price per Settlement Period for each month.

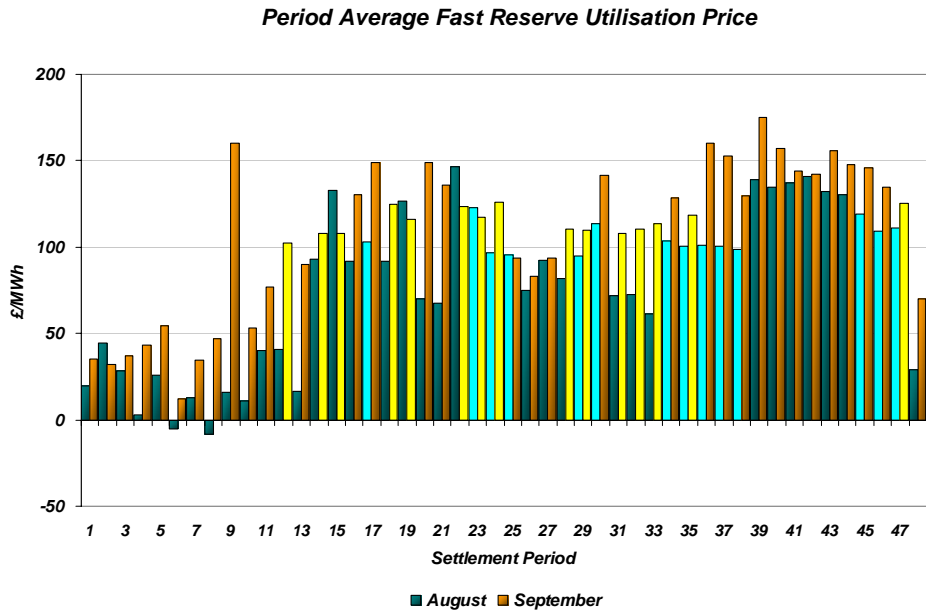


Figure 4

Finally, the same data is used in Figure 5, below, to show the profile of total Fast Reserve utilisation expenditure per Settlement Period for each month.

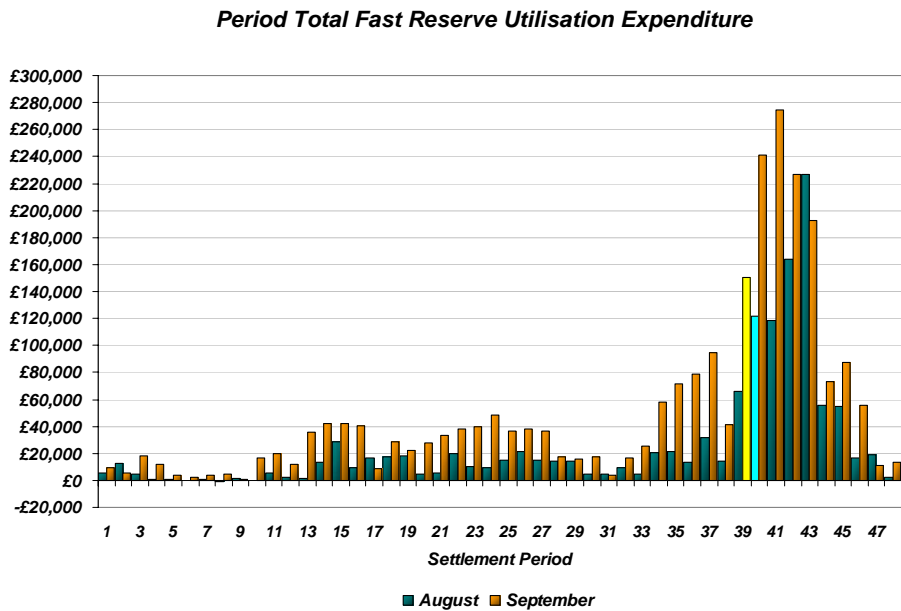


Figure 5

The total volumes of Fast Reserve utilisation of **11.66GWh** for August 2007 and **19.26GWh** for September 2007, broken down into price bands are as follows:

August	Price band (£/MWh range)	Volume (MWh)	Average Price (£/MWh)	Cost (£m)
	2000 to 99999	0	n/a	n/a
OFFERS	1000 to 2000	0	n/a	n/a
	300 to 1000	0	n/a	n/a
	0 to 300	10,197	119	1.22
Total		10.2GWh		£1.22m
	0 to 300	-1,257	10	-0.01
BIDS	-300 to 0	-191	-133	0.03
	-1000 to -300	-17	-440	0.01
	-2000 to -1000	0	n/a	n/a
	-99999 to -2000	0	n/a	n/a
Total		-1.46GWh		£0.02m
Total		11.66GWh		£1.24m

September	Price band (£/MWh range)	Volume (MWh)	Average Price (£/MWh)	Cost (£m)
	2000 to 99999	0	n/a	n/a
OFFERS	1000 to 2000	0	n/a	n/a
	300 to 1000	38	344	0.01
	0 to 300	17,176	130	2.24
Total		17.21GWh		£2.25m
	0 to 300	-1,189	16	-0.02
BIDS	-300 to 0	-840	-185	0.16
	-1000 to -300	-16	-450	0.01
	-2000 to -1000	0	n/a	n/a
	-99999 to -2000	0	n/a	n/a
Total		-2.04GWh		£0.14m
Total		19.26GWh		£2.39m

For the month of November 2007, tenders from eligible Service Providers for firm Fast Reserve should be submitted to National Grid by Friday 12th October 2007 (business day 10). National Grid will notify Service Providers of the outcome of the tender assessment by Friday 19th October 2007 (business day 15).

Tenders should be sent for the attention of:

Bea Ennim
Network Operations
National Grid Electricity Transmission plc
National Grid House
Warwick Technology Park
Gallows Hill
Warwick
CV34 6DA

Tenders can be sent by fax to Bea Ennim on 01926 656612.