

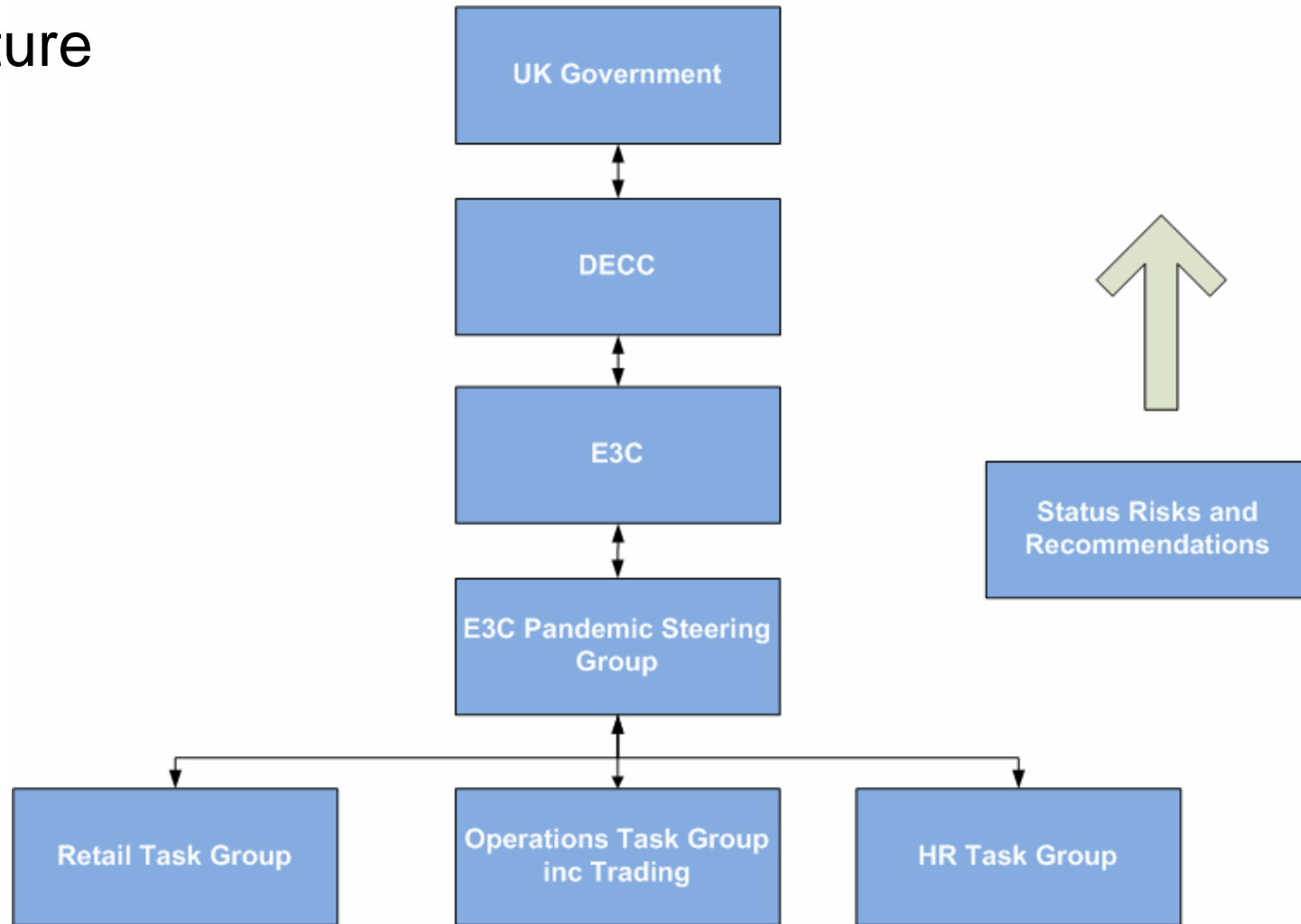


Pandemic Influenza Planning

Swine flu

UK trading Tuesday 16th June




E3C Pandemic Planning Structure



- **The aim of all of this work has been to ensure that the industry is in the best position to keep the lights on.**
- **Most Trading involvement has been via the E3C reps from the companies talking to you about your issues, and I want to thank you for your support to date.**
- **The engagement with DECC via the E3C task groups has allowed us to ensure that the industries concerns are aired with DECC and other government departments**
- **This may include relaxation of some regulations to allow the industry to maintain supplies.**
- **We want to address this now so that we can speak as an industry and not try and change things when the situation gets tight.**

- **Any regulations that are relaxed will need justifying to the Government but they are listening.**
- **I want as Ops group chair to ensure that any issues from the trading community are included.**
- **A focus for all of us is to ensure that the system remains energised and the current arrangements are maintained to allow this to happen.**
- **DECC is calling for information via a daily SITREP looking at staff absence, supplies etc this will be invoked at a later date. This is very important as it will allow the government to focus on any issues**

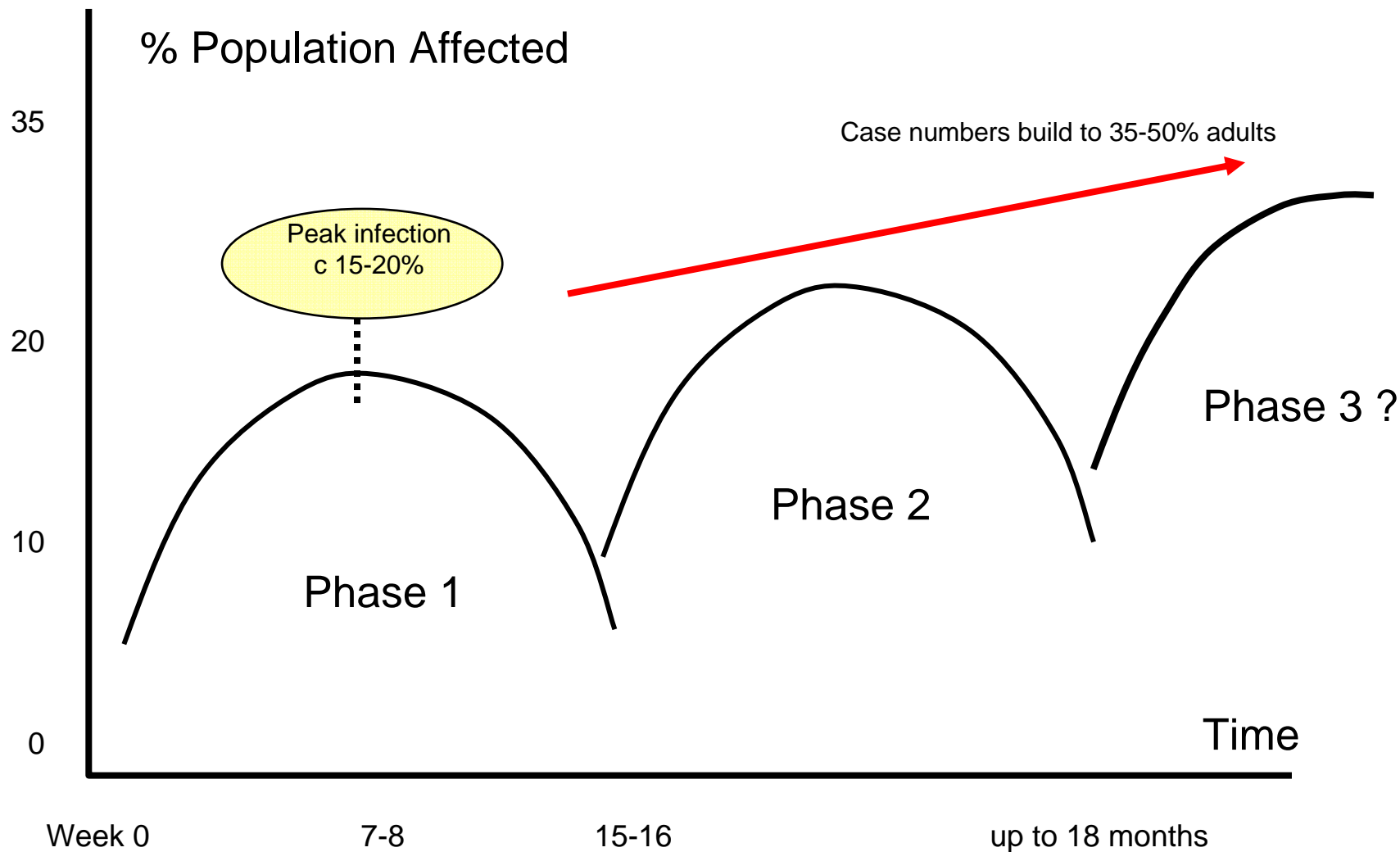
- **Commodities**
- **Part of the SITREP will be the commodities situation this will be requested by DECC and allow them to identify any shortages occurring.**
- **It focuses on key commodities and it is hoped be supplied to NG (*to be agreed*) each day the report is simple to use and gives an indication of how much of an issue any material is.**

Guide	
	Material has less than 5 days remaining without re supply
	Material has less than 14 days remaining without re supply or will run out before materail can be resupplied
	No current concern with material



Generator Owner	E.ON UK							
Station Name:	Kingsnorth	Ironbridge	Ratcliffe	Grain	Connahs Quay	Killingholme	CDC	Enfield
BMU prefix	Kino	Irnp	Rats	Grai	Cnqps	Killpg	CDCL	EECL
Consumable rtype								
Key staff						Amber		
Coal	Green							
HFO				Green				
Distilate	Red	Red						
Propane								
Hydrazine	Amber							
Oxygen scavenger								
Ammonia								
Morpoline								
Trisodium Phosphate 3%								
H ₂ SO ₄	Green							
Caustic soda								
HCL								
RO Chemicals								
Zenon Chemicals								
Citric Acid					Green			
Sodium Hypochlorite								
Hydrogen								
Nitrogen								
CO ₂								
Nitrogen liquid CQ								
Sulphur								
Turbine Oil								
Nitrogen special grade								
Compressed air L size zero grade 270029-L-C								
Nitrous Oxide 50ppm								
CO 100ppm								
Other materials								

Predicted Pandemic Pattern



- **Have you considered what roles are critical to your organisation and how you could cope without key staff.**
- **NG will be under the same stress as any generator/trader so we must plan not to add anything to NG's workload.**
- **The issues generated around the first 500 cases of swine flu in the UK are a fraction of what may happen when we get to winter 09 as the Flu virus is more active in the winter.**
- **Government advice is that the current form is app 3 times more infectious as seasonal flu. But it could mutate and increase its ability to infect.**
- **The few months we have until the UK winter is our chance to prepare for a Pandemic event in the UK.**