

# Fast Reserve

## Market Information for Tenders for March 2010

National Grid publishes this information, in order to inform potential participants for the Fast Reserve tender round for March 2010.

### Fast Reserve Availability

Our indicative requirement for Fast Reserve in March 2010 is shown on a Settlement Period basis in Figure 1. This requirement covers weekdays, Saturdays, Sundays and Bank Holidays.

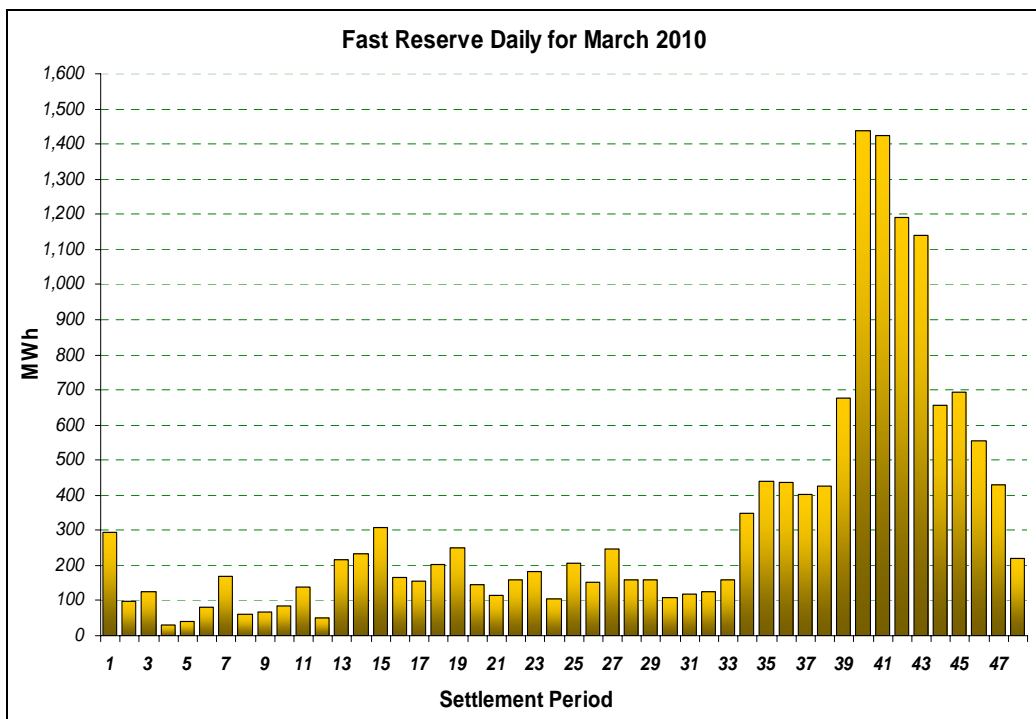


Figure 1

Figure 1 gives an indication of the times of day when Fast Reserve is most useful to National Grid. The actual amount of Fast Reserve "holding" varies from day to day, according to system conditions.

### Fast Reserve Utilisation

The following BM information is based on the aggregate of Offers plus Bids accepted to provide Fast Reserve or an equivalent service. Note that the data for January 2009 contains both out-turn and forecast.

Figure 2 shows the daily utilisation of Fast Reserve in the BM and elsewhere during December 2009 and January 2010.

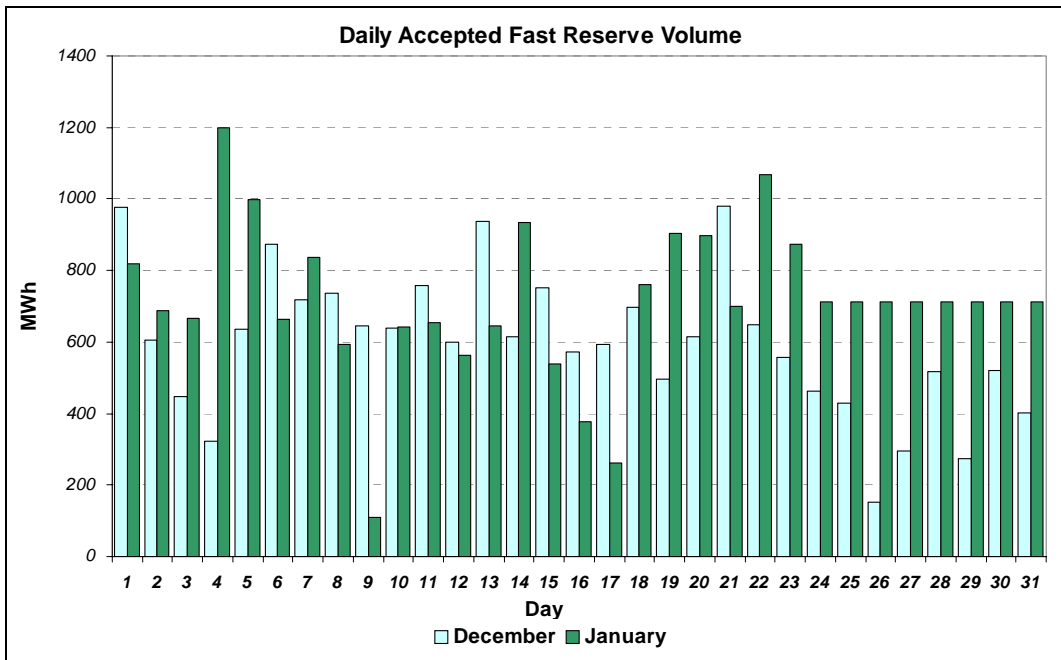


Figure 2

Figure 3 represents this data as total utilisation by Settlement Period across each month. This shows the daily profile of Fast Reserve utilisation.

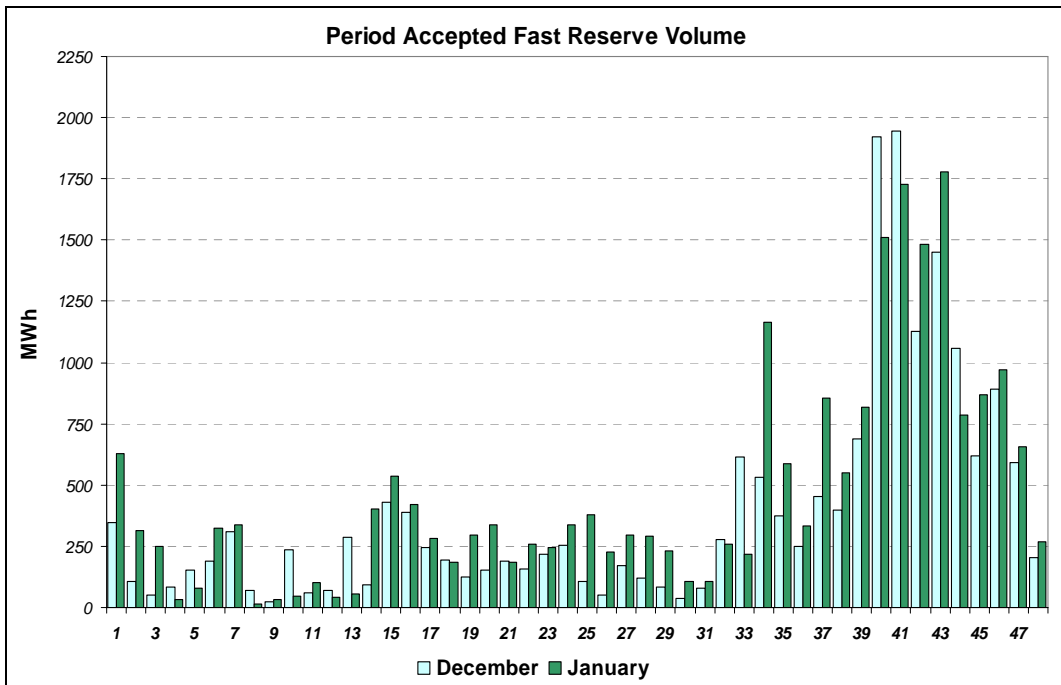


Figure 3

Figure 4 represents the same historical data, as an average utilisation price per Settlement Period for each month.

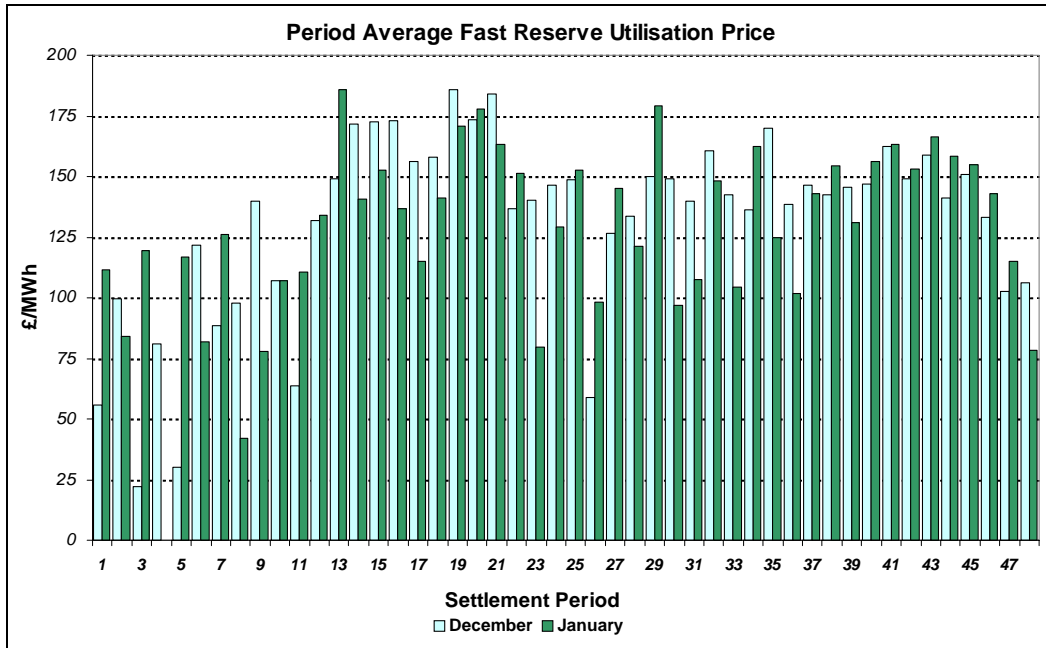


Figure 4

Finally, the same data is used in Figure 5, below, to show the profile of total Fast Reserve utilisation expenditure per Settlement Period for each month.

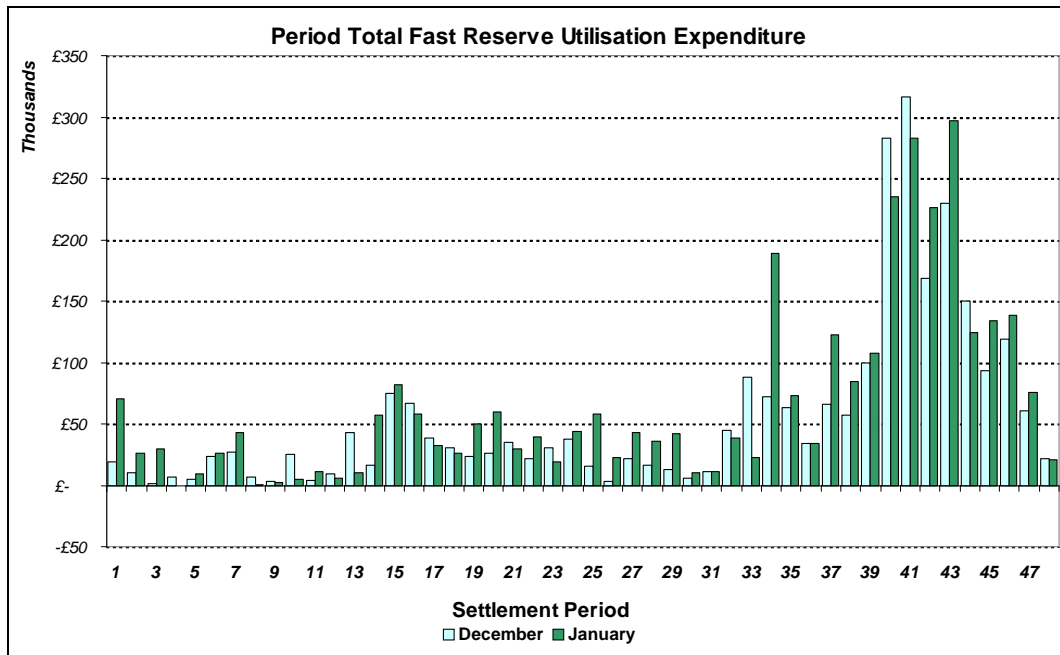


Figure 5

The total volumes of Fast Reserve utilisation of **16.28GWh** for December and **19.74GWh** for January, broken down into price bands are as follows:

December	Price band (£/MWh range)	Volume (MWh)	Average Price (£/MWh)	Cost (£m)
OFFERS	2000 to 99999	0	n/a	n/a
	1000 to 2000	0	n/a	n/a
	300 to 1000	70	338	0.02
	0 to 300	16,214	156	2.52
<b>Total</b>		<b>16.28GWh</b>		<b>£2.55m</b>
BIDS	0 to 300	-1,844	19	-0.04
	-300 to 0	-116	-187	0.02
	-1000 to -300	-229	-461	0.11
	-2000 to -1000	0	n/a	n/a
	-99999 to -2000	0	n/a	n/a
<b>Total</b>		<b>-2.19GWh</b>		<b>£0.09m</b>
<b>Total</b>		<b>18.47GWh</b>		<b>£2.64m</b>

January	Price band (£/MWh range)	Volume (MWh)	Average Price (£/MWh)	Cost (£m)
OFFERS	2000 to 99999	0	n/a	n/a
	1000 to 2000	0	n/a	n/a
	300 to 1000	48	343	0.02
	0 to 300	19,692	157	3.09
<b>Total</b>		<b>19.74GWh</b>		<b>£3.11m</b>
BIDS	0 to 300	-1,977	28	-0.05
	-300 to 0	-413	-178	0.07
	-1000 to -300	-84	-488	0.04
	-2000 to -1000	0	n/a	n/a
	-99999 to -2000	0	n/a	n/a
<b>Total</b>		<b>-2.47GWh</b>		<b>£0.06m</b>
<b>Total</b>		<b>22.21GWh</b>		<b>£3.17m</b>

For the month of March 2010, tenders from eligible Service Providers for firm Fast Reserve should be submitted to National Grid by Monday 1<sup>st</sup> February 2010 (business day 1) for multi-month tenders, or Wednesday 3<sup>rd</sup> February 2010 (business day 3) for single month tenders. National Grid will notify Service Providers of the outcome of the tender assessment by Friday 12<sup>th</sup> February 2010 (business day 10).

Tenders should be sent for the attention of:

Bea Ennim  
Network Operations  
National Grid Electricity Transmission plc  
National Grid House  
Warwick Technology Park  
Gallows Hill  
Warwick  
CV34 6DA

Tenders can be sent by fax to Bea Ennim on 01926 656612.