

Operational Overview

Nolan Robertson

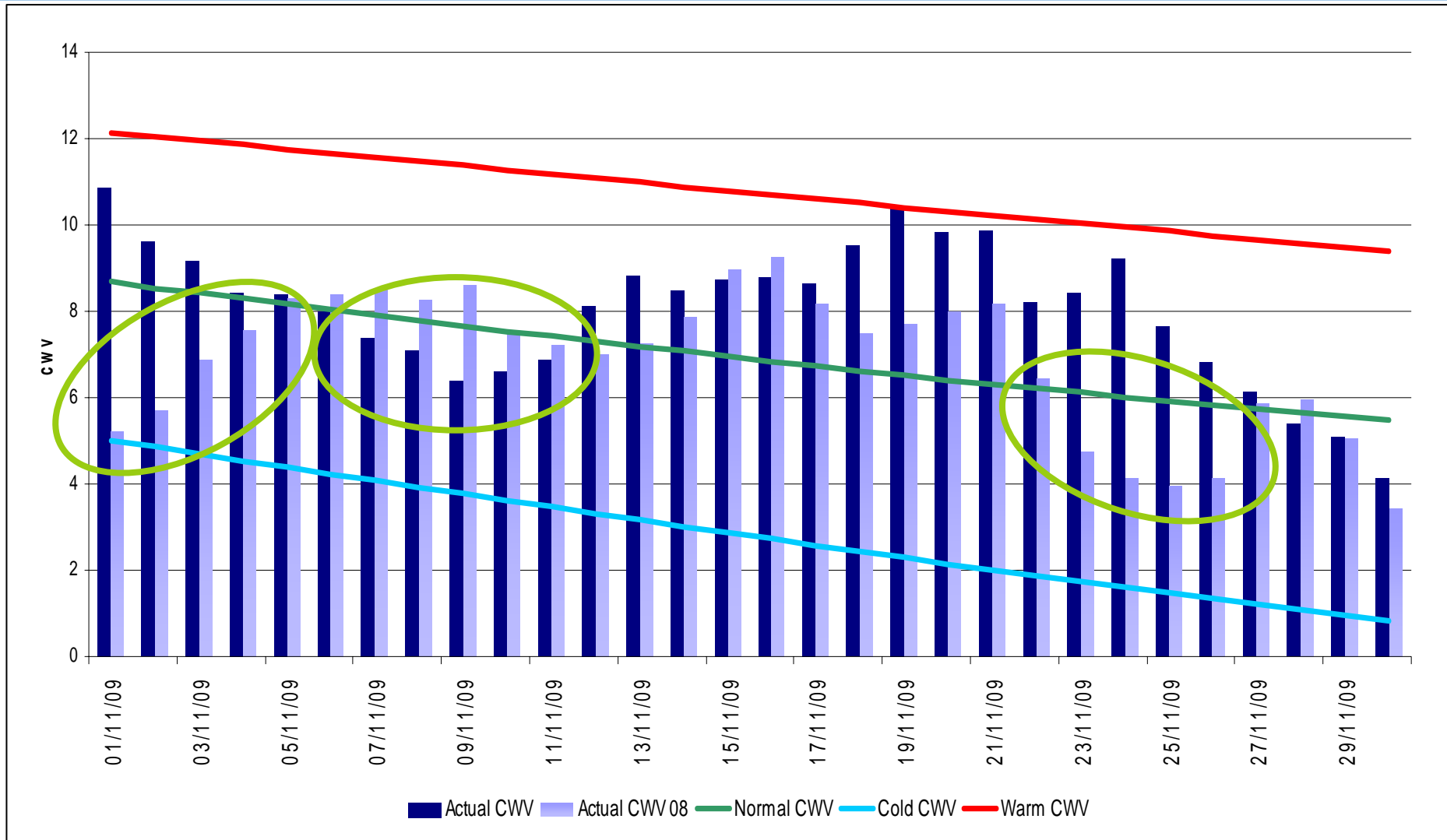


nationalgrid

The power of action.™

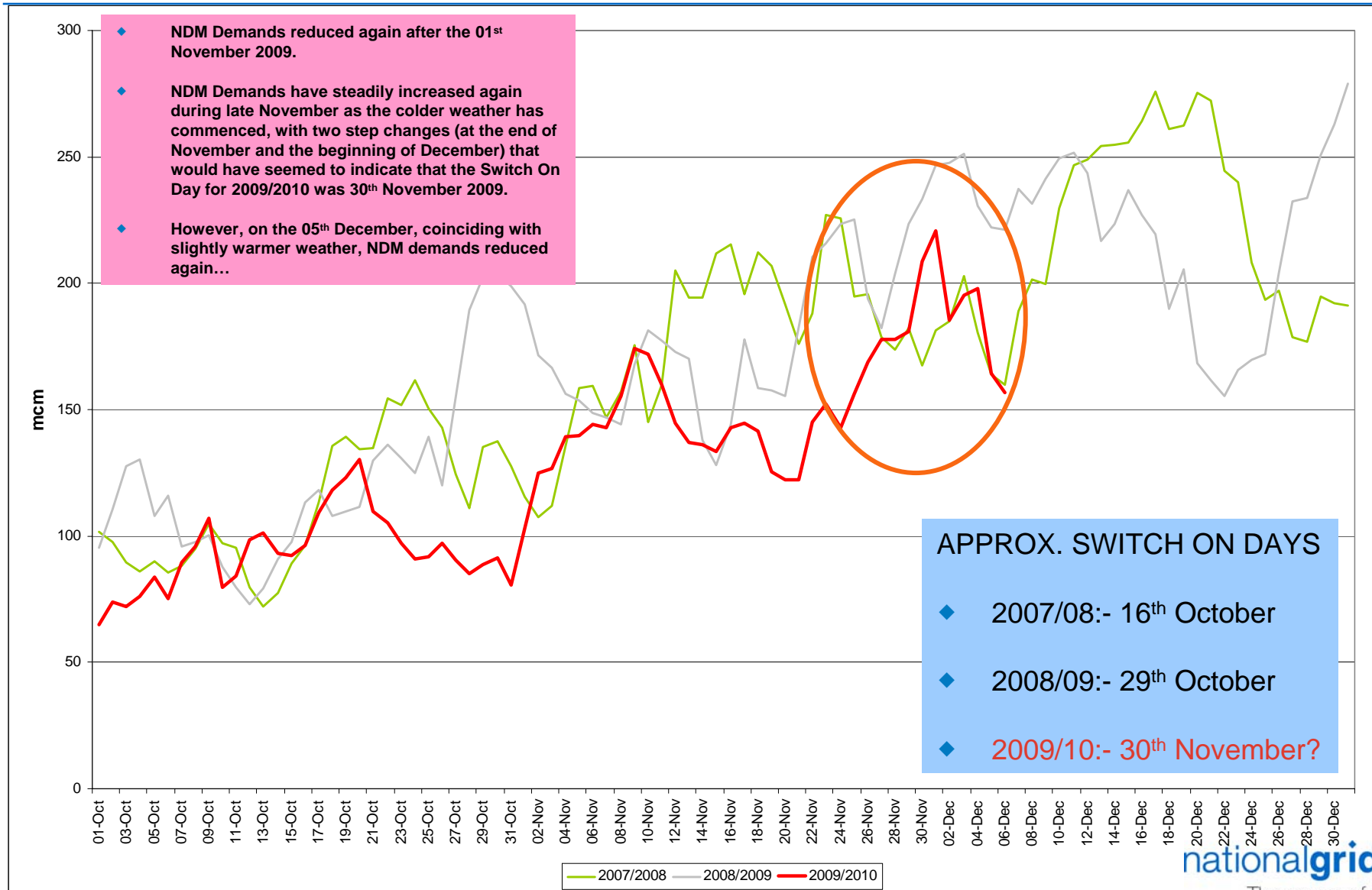
Composite Weather Variables

From 01-November-2009 to 29-November-2009



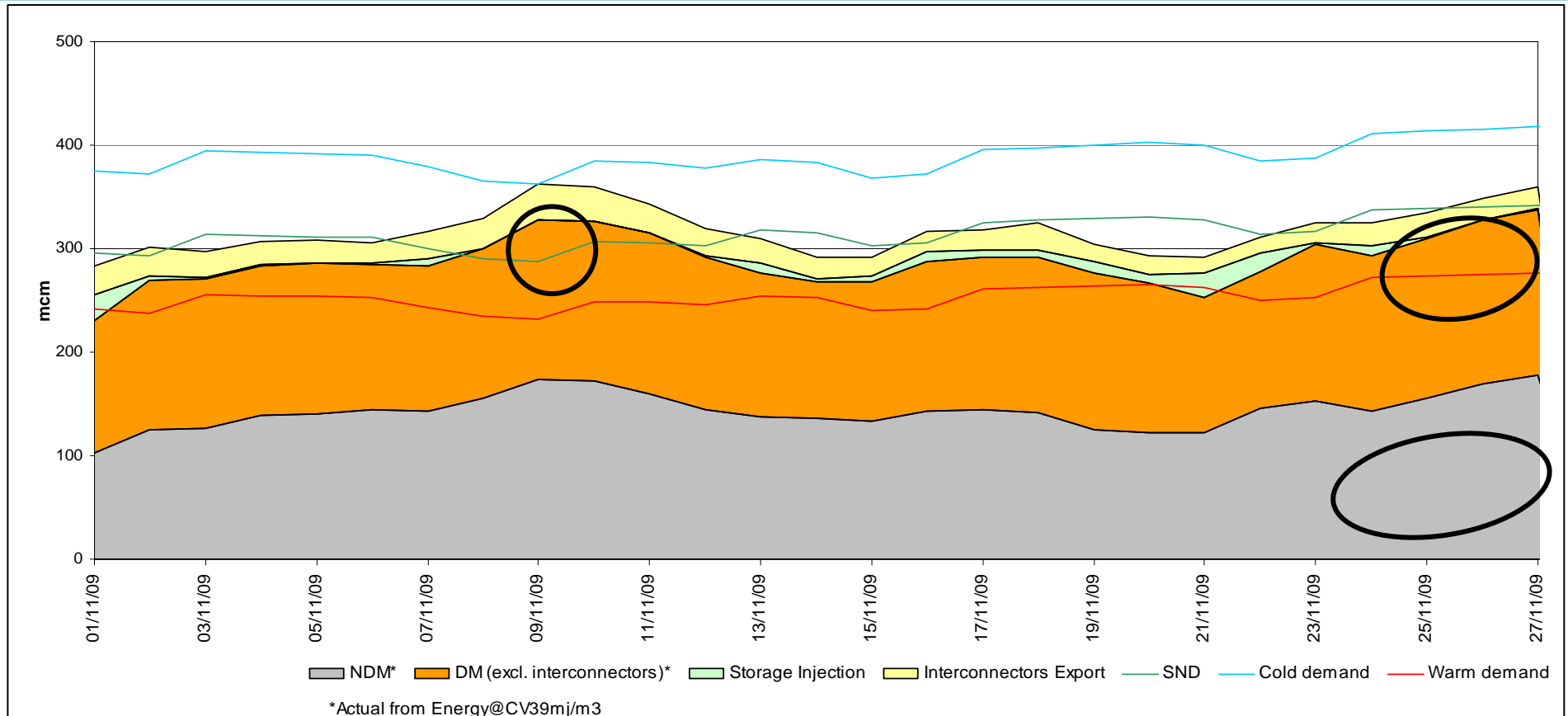
NDM Demands By Winter

October to December – 2007/2008, 2008/2009 and 2009/2010



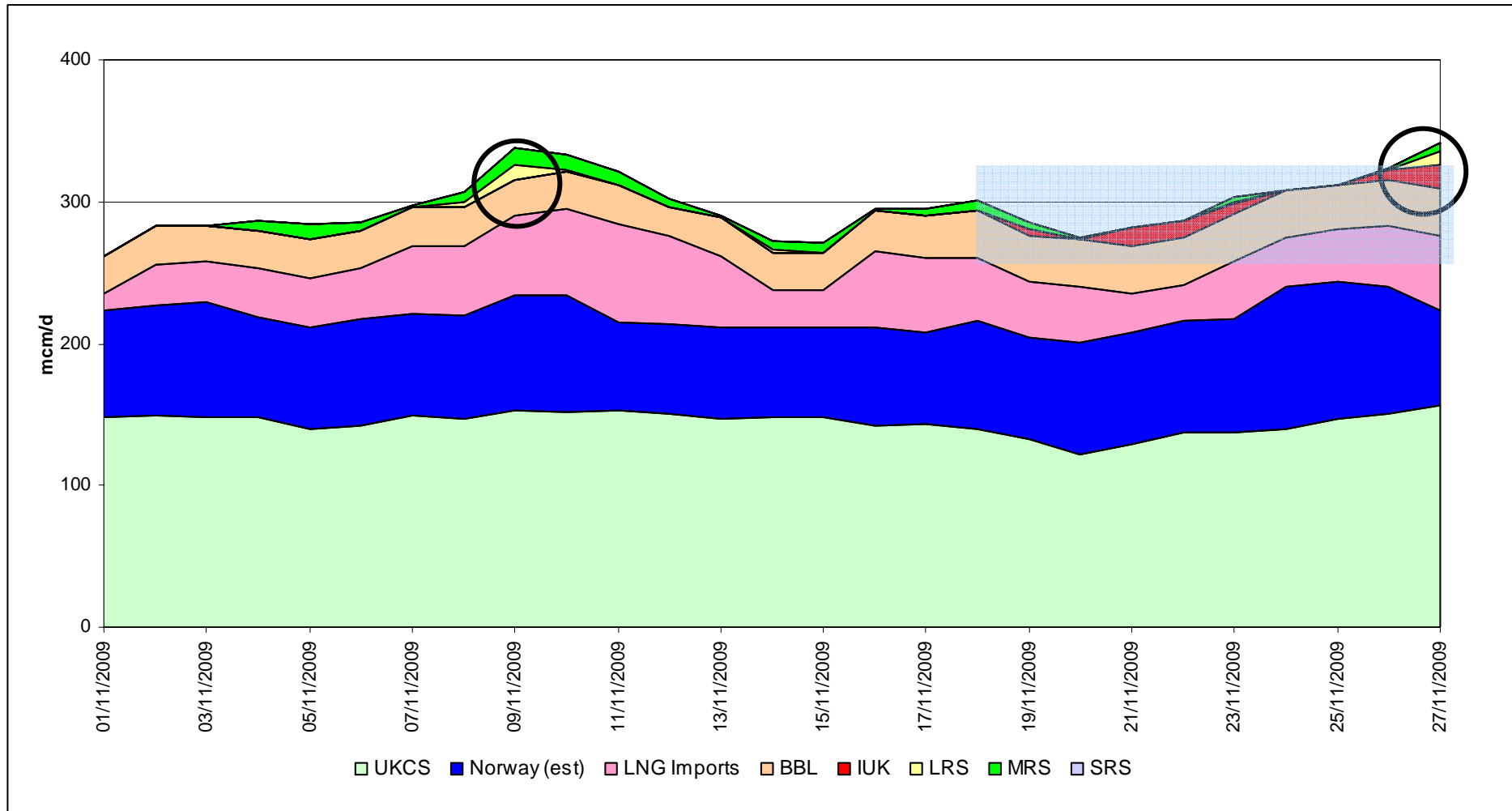
Gas Demand Breakdown

From 01-November-2009 to 27-November-2009



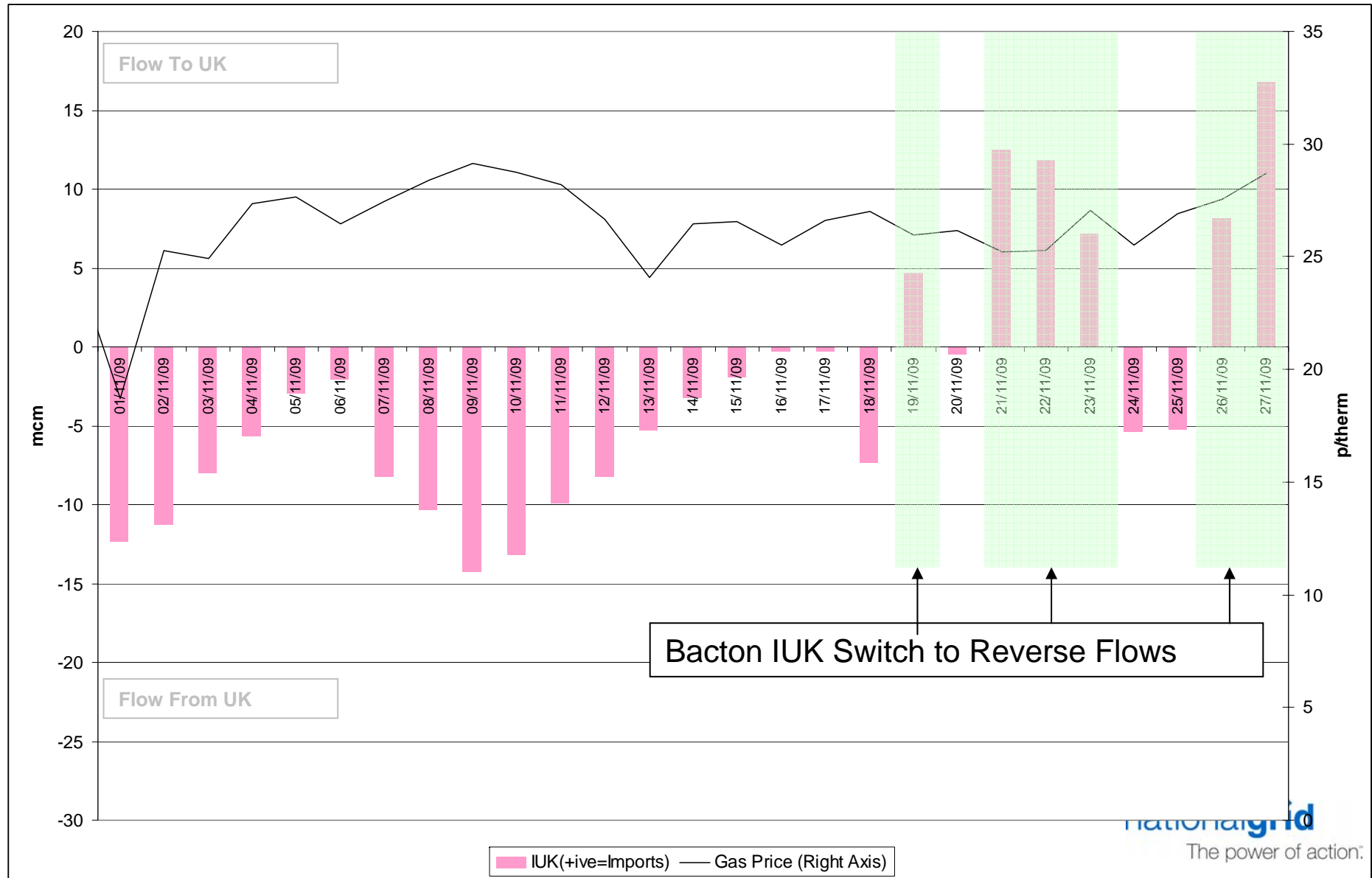
Gas Supply Breakdown

From 01-November-2009 to 27-November-2009



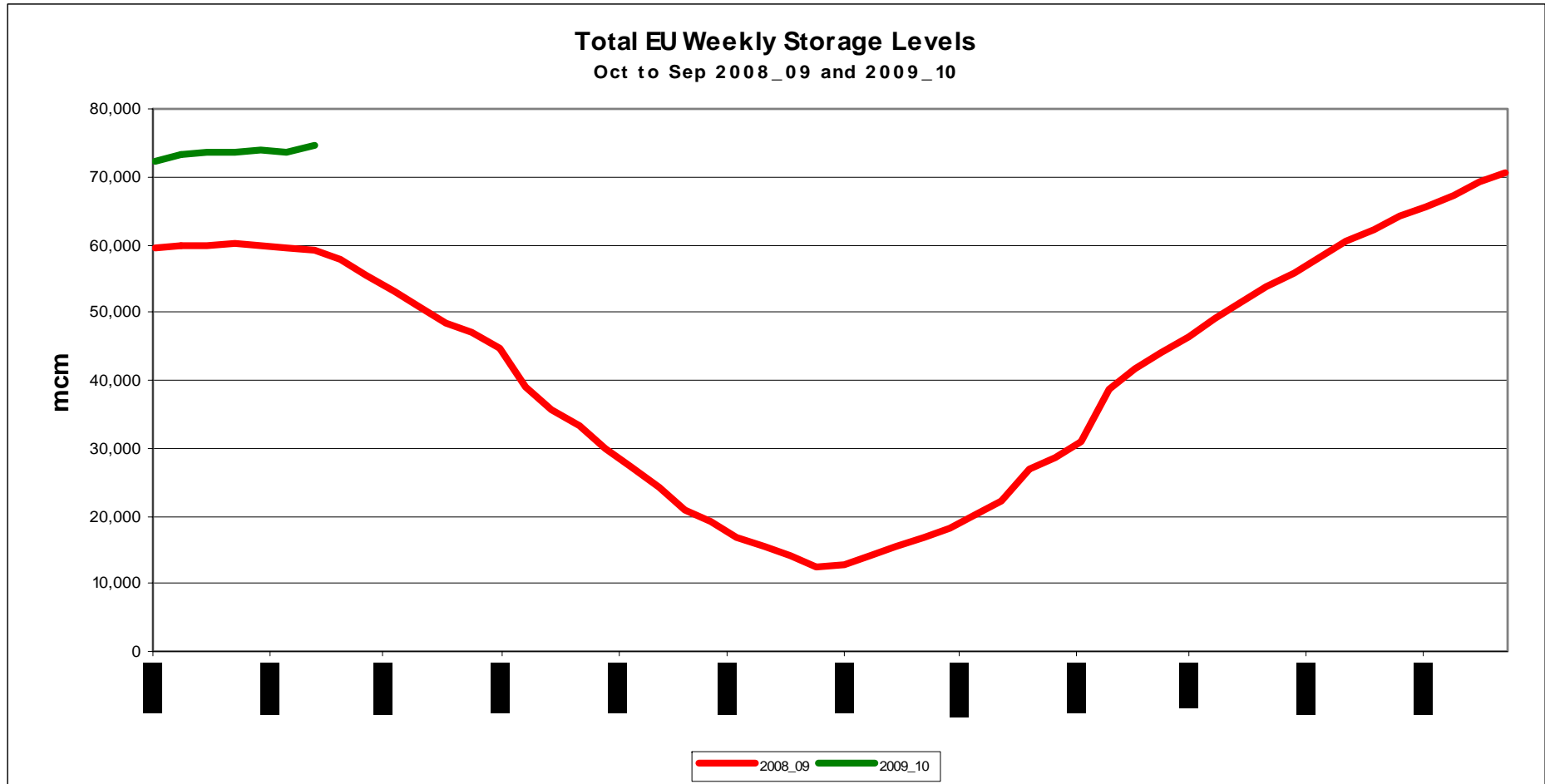
Bacton IUK – Switch to Reverse Flows

From 01-October-2009 to 27-November-2009



Storage Stocks - EU

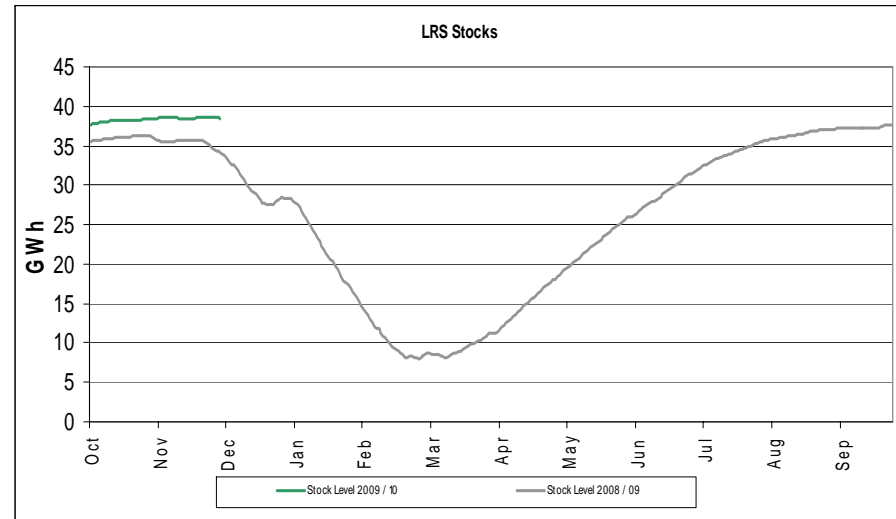
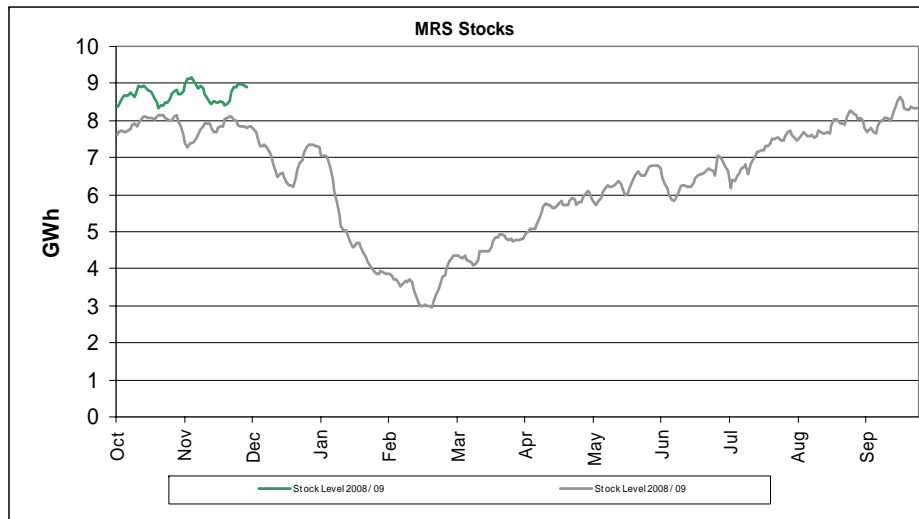
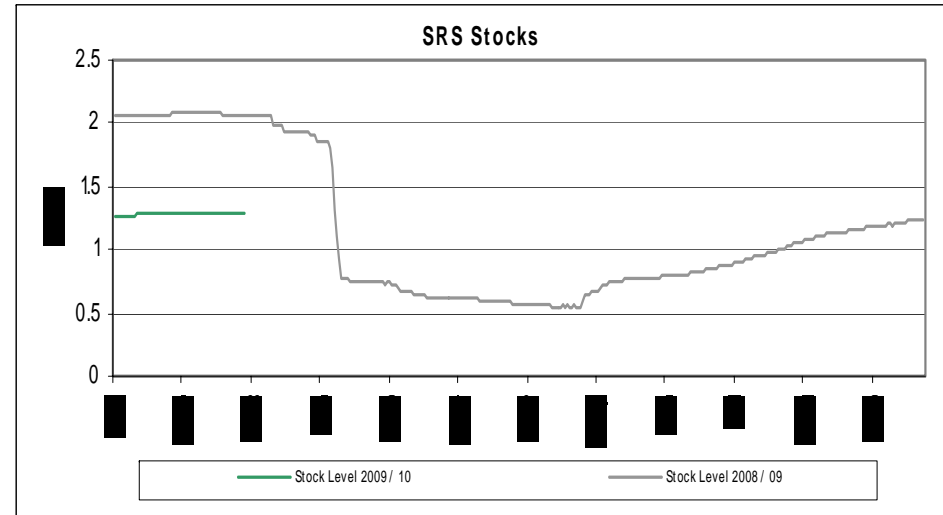
- ◆ There have been no significant reductions in European stock levels so far this winter. All European hub stock levels are currently close to maximum levels.



Storage Stocks - UK

From 01-October-2009 to 30-November-2010

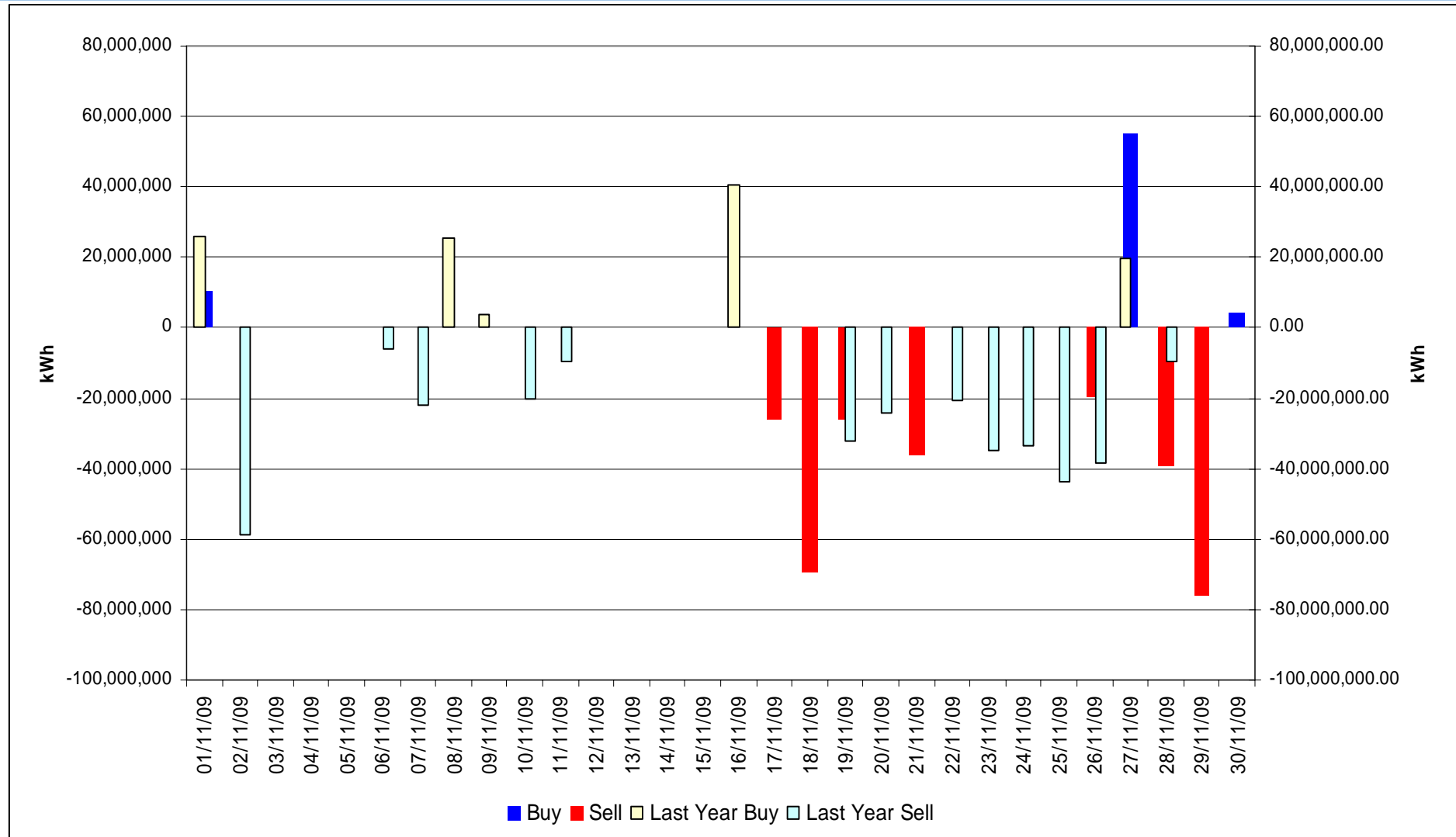
- All UK Storage stocks are still close to maximum levels. Any withdrawals at times of higher demands have been countered by injections during lower demand periods.



Transporter Energy Traded on the OCM

Buys and Sells by Day

From 01-November-2009 to 30-November-2009



Days of Default SMP Prices

From 01-November-2009 to 30-November-2009

Percentage of Days of Default SMP

SMP Buy

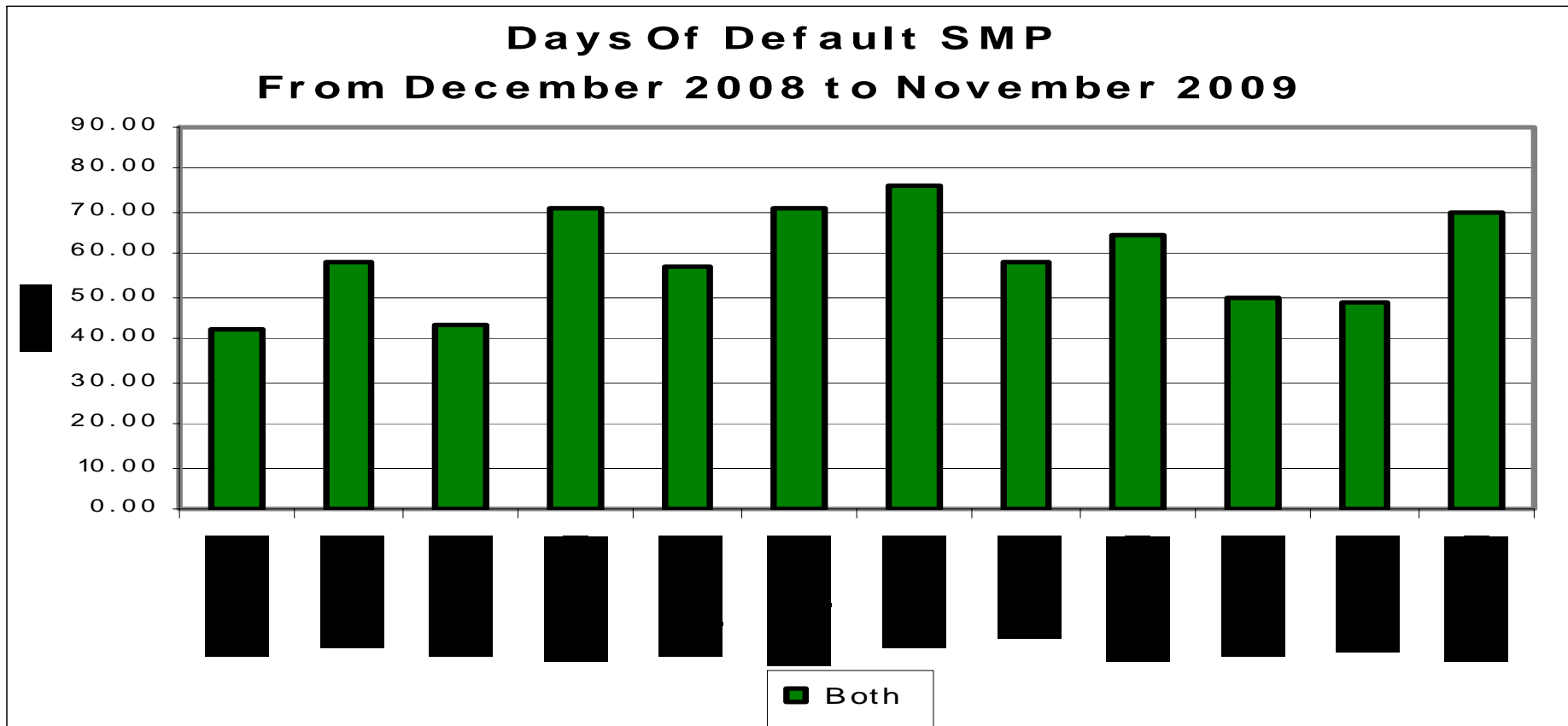
SMP Sell

Both

90.0%

80.0%

70.0%



nationalgrid

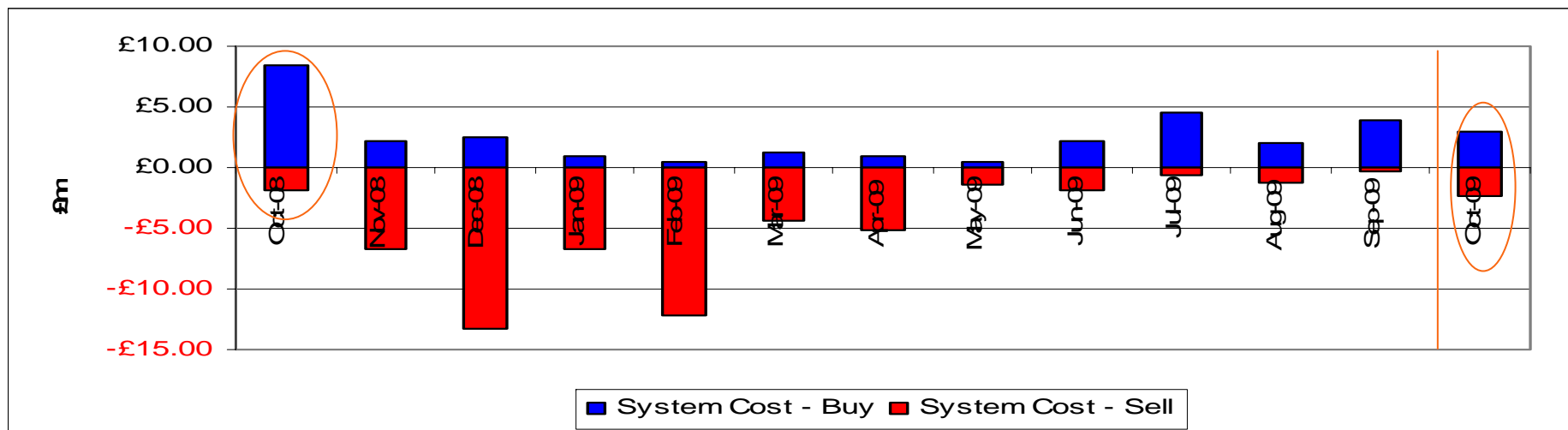
The power of action.

Transporter Actions on OCM Mechanism

Revenues / Costs

From 01-October-2009 to 31-October-2009

	Quantity (TWh)	Average Price (p/KWh)	Average Price (p/therm)	Cost (£m)
System Buy	0.324	0.9336	27.35	£3.02
System Sell	-0.337	0.7194	21.08	-£2.42
Net Position	0.013 Sell			£0.6



Imbalance Gas

Revenues / Costs

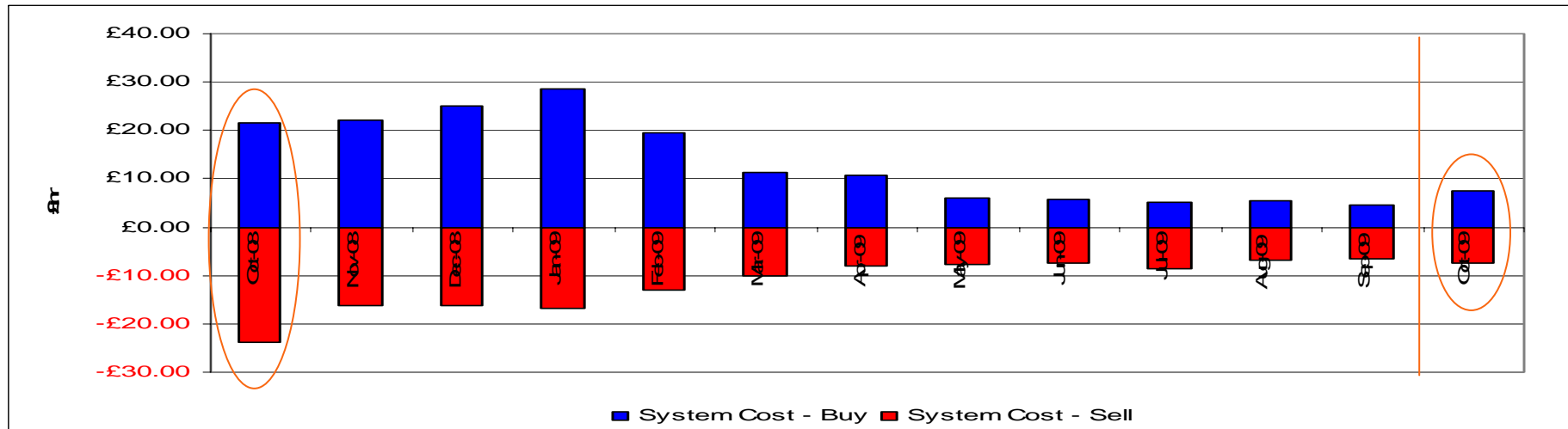
From 01-October-2009 to 31-October-2009

System	Quantity (TWh)	Average Price (p/KWh)	Average Price (p/therm)	Cost £m
System Buy	0.99	0.7679	22.50	£7.61
System Sell	-0.90	0.8161	23.91	-£7.31

Net Position

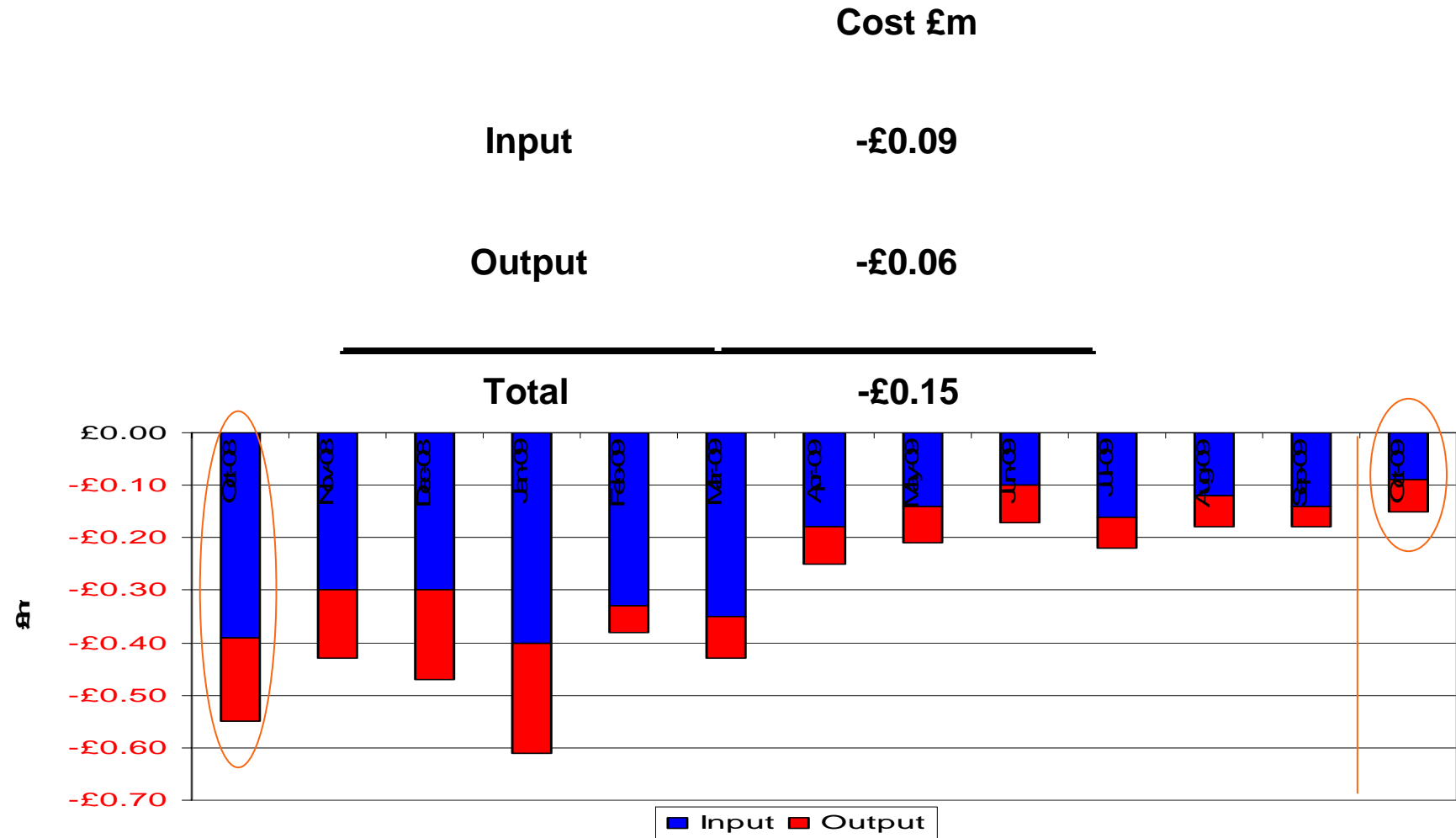
0.09 Buy

£0.30



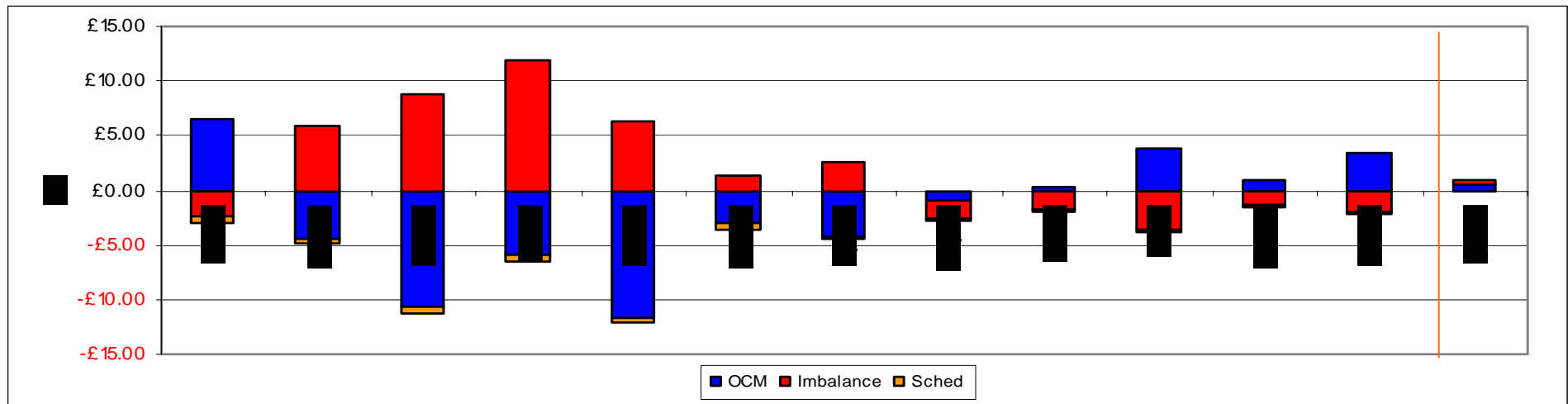
Scheduling Revenues

From 01-October-2009 to 31-October-2009



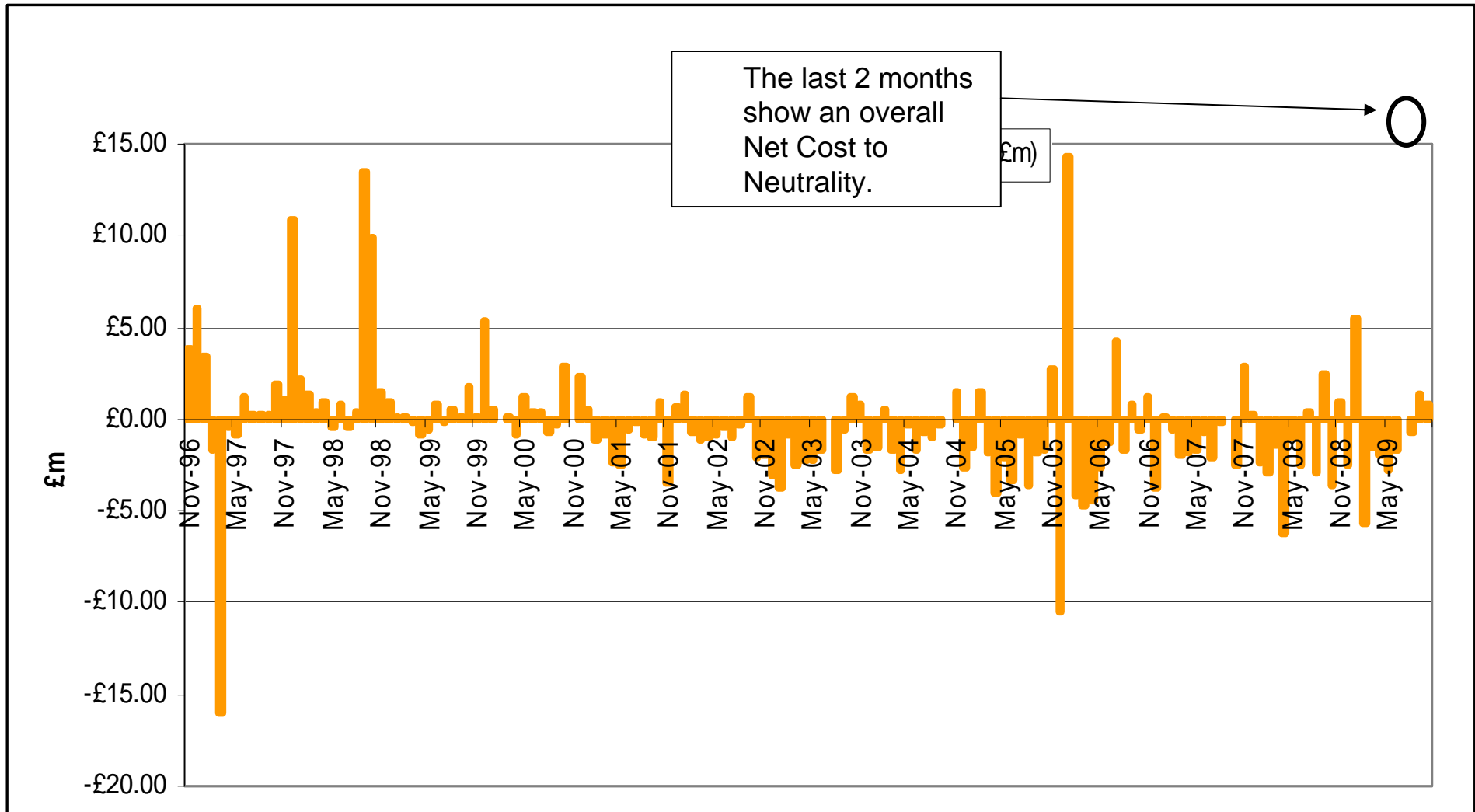
Balancing Costs

From 01-October-2008 to 30-September-2009



Net Neutrality Costs

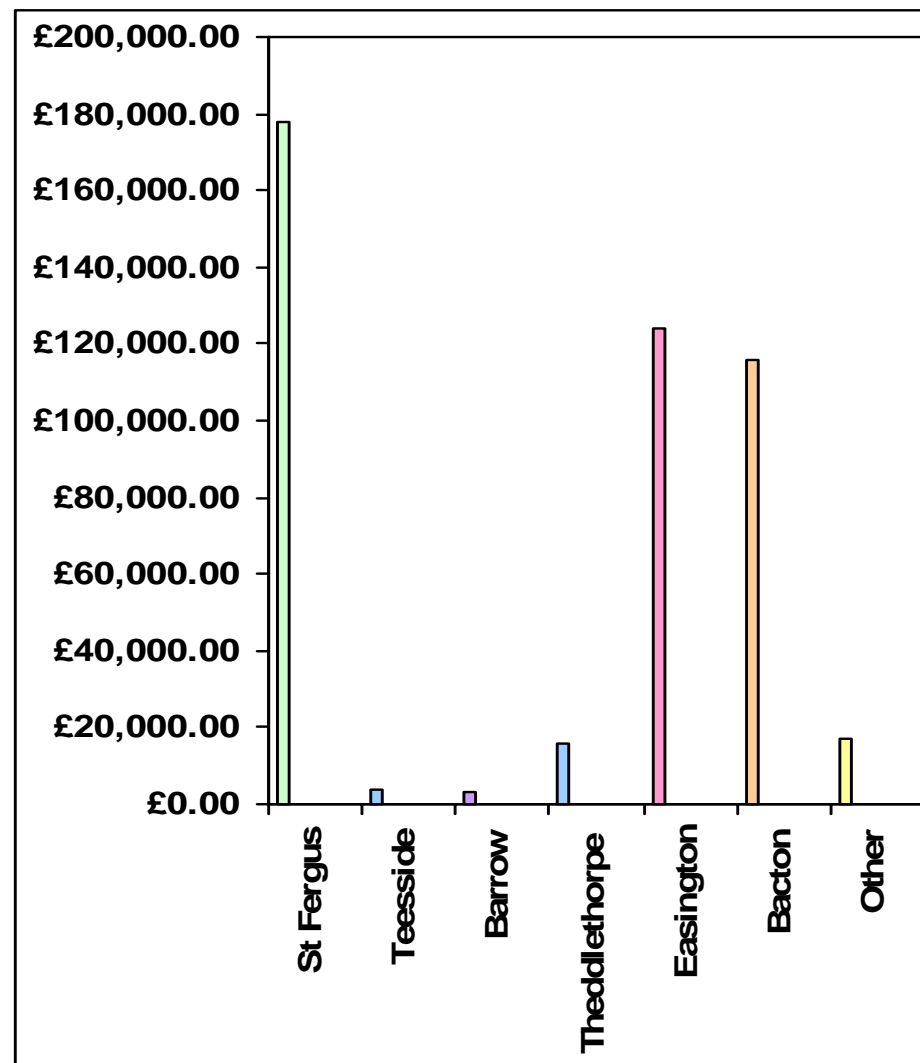
From 01-Nov-1996 to 31-Oct-2009



Capacity Neutrality – Revenues From DSEC & DAI

From 01 April 2009 to 31 October 2009

ASEP	Revenue
St Fergus	£178,137.49
Teesside	£3,703.82
Barrow	£3,438.50
Theddlethorpe	£15,546.47
Easington	£124,212.69
Bacton	£115,879.60
Other	£17,066.52
TOTAL	£460,146.47



Capacity Neutrality – Prompt Buy Backs

From 01 April 2009 to 31 October 2009

ASEP	Cost	No.of days	Volume (kWh)
St Fergus	£0	0	0
Teesside	£0	0	0
Barrow	£0	0	0
Theddlethorpe	£0	0	0
Easington	£0	0	0
Bacton	£0	0	0
TOTAL	£0	0	0

Capacity Neutrality – Revenues From Overruns

From 01 April 2009 to 31 October 2009

Month	Revenue
April 2009	-£31,271.01
May 2009	-£154,266.59
June 2009	-£4,201.89
July 2009	-£345,143.81
August 2009	-£176,913.79
September 2009	-£2,992.58
October 2009	-£1,181.58
Total	-£715,971.25

Capacity Neutrality – Capacity Management Agreement (including RMTTSEC)

From 01 April 2009 to 31 October 2009

Month	Cost
April 2009	£11,589.17
May 2009	£0.00
June 2009	£35,442.00
July 2009	£0.00
August 2009	£0.00
September 2009	£0.00
October 2009	£0.00
Total	£47,031.17

Capacity Neutrality – Net Cost/Revenue

From 01 April 2009 to 31 October 2009

DSEC/DAI Revenue	-£460,146.47
Buy back costs	+£0.00
Capacity Management Agreement	+£47,031.17
Overrun Revenue	-£715,971.25
Net Revenue	-£1,129,086.55

Best Usage of MIPI Pull APIs

- While performing analysis on the number and frequency of the usage of the Pull API service available, we have noticed that a large number of MIPI customers are unnecessarily requesting data at a frequency of every few minutes for screens that are only updated on an hourly basis (such as the NB92 report, shown below).

Report : System Status Information (NB92) Back to Report Explorer

Quality Indicator Legend
 E : Expired A : Amended C : Corrected S : Substituted L : Late Received

Download Report in : CSV XML

System Status Information

Gas Day: 01/12/2009

Applicable Date: 01/12/2009 13:02

Demand Forecast NTS : 383.7

Gas Day	Time	Opening Linepack	Predicted Closing Linepack (PCLP1)	Predicted Closing Linepack (PCLP2)
01/12/2009	13:02	333.5	339.4	298.9

Applicable Date: 01/12/2009 12:02

Demand Forecast NTS : 381.2

Gas Day	Time	Opening Linepack	Predicted Closing Linepack (PCLP1)	Predicted Closing Linepack (PCLP2)
01/12/2009	12:02	333.5	341.3	298.9

Applicable Date: 01/12/2009 11:01

Demand Forecast NTS : 380.0

Gas Day	Time	Opening Linepack	Predicted Closing Linepack (PCLP1)	Predicted Closing Linepack (PCLP2)
01/12/2009	11:01	333.5	346.1	298.9

- This is causing an unnecessary strain on National Grid’s network and could potentially lead to system problems and consequently delays in the publication of data.
- National Grid will shortly be releasing Push APIs, which will allow users to select the data required and have National Grid “push” the data to the user’s server, rather than the user needing to request this data from us.
- For further information, please contact the website Customer Helpline on 01926 656474, or via email on sysop.centre.reporting@uk.ngrid.com.

Feedback

- ◆ We are constantly looking to improve the content and relevance of the information that we present in this slide pack to you, and we would be interested in any feedback that you can provide to us on this.
- ◆ Is the slidepack useful and relevant to you?
- ◆ Are there any topics relating to the Operation of the system that we do not currently cover that you would like to see covered?
- ◆ Or are there topics that we **do** cover that you feel are not relevant?
- ◆ Do you have any other relevant feedback?
- ◆ Please send any comments and feedback to sysop.centre.reporting@uk.ngrid.com, or feel free to call us on 01926 656474 to discuss this in more detail. Any feedback will be gratefully received.