

## Fast Reserve

### Market Information for Tenders for September 2011

National Grid publishes this information, in order to inform potential participants for the Fast Reserve tender round for September 2011.

### Fast Reserve Availability

Our indicative requirement for Fast Reserve in September 2011 is shown on a Settlement Period basis in Figure 1. This requirement covers weekdays, Saturdays, Sundays and Bank Holidays.

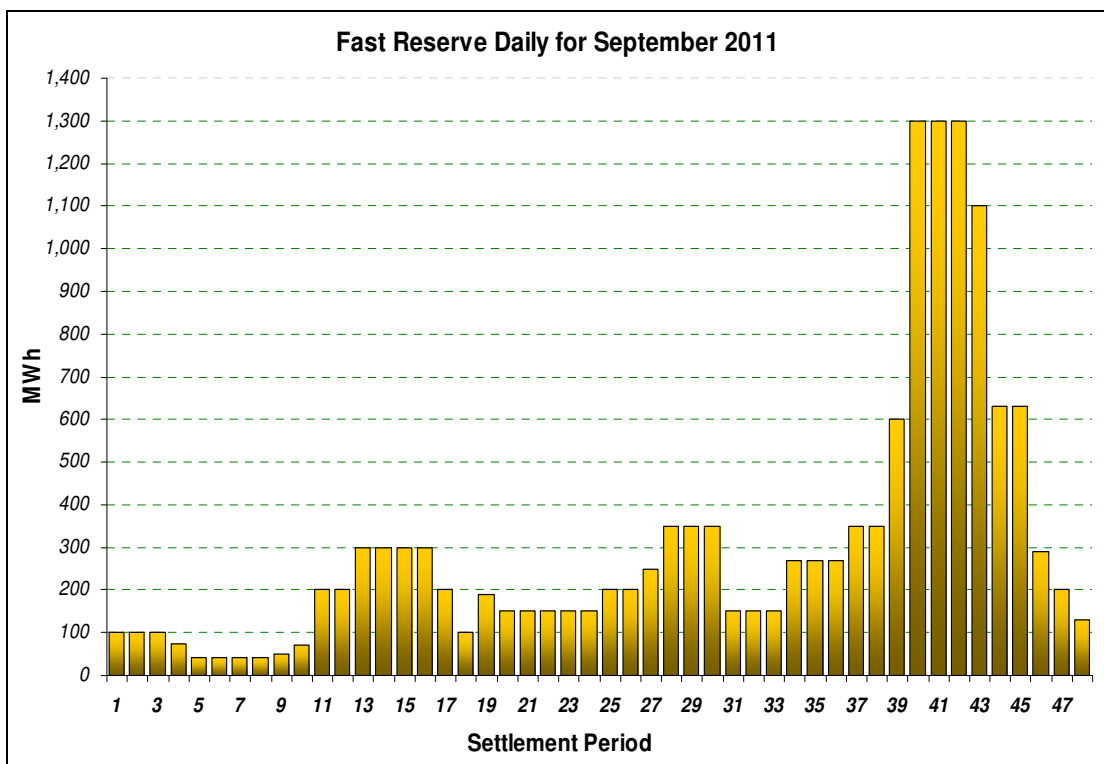


Figure 1

Figure 1 gives an indication of the times of day when Fast Reserve is most useful to National Grid. The actual amount of Fast Reserve "holding" varies from day to day, according to system conditions.

### Fast Reserve Utilisation

The following BM information is based on the aggregate of Offers plus Bids accepted to provide Fast Reserve or an equivalent service. Note that the data for July 2011 contains both out-turn and forecast.

Figure 2 shows the daily utilisation of Fast Reserve in the BM and elsewhere during June 2011 and July 2011.

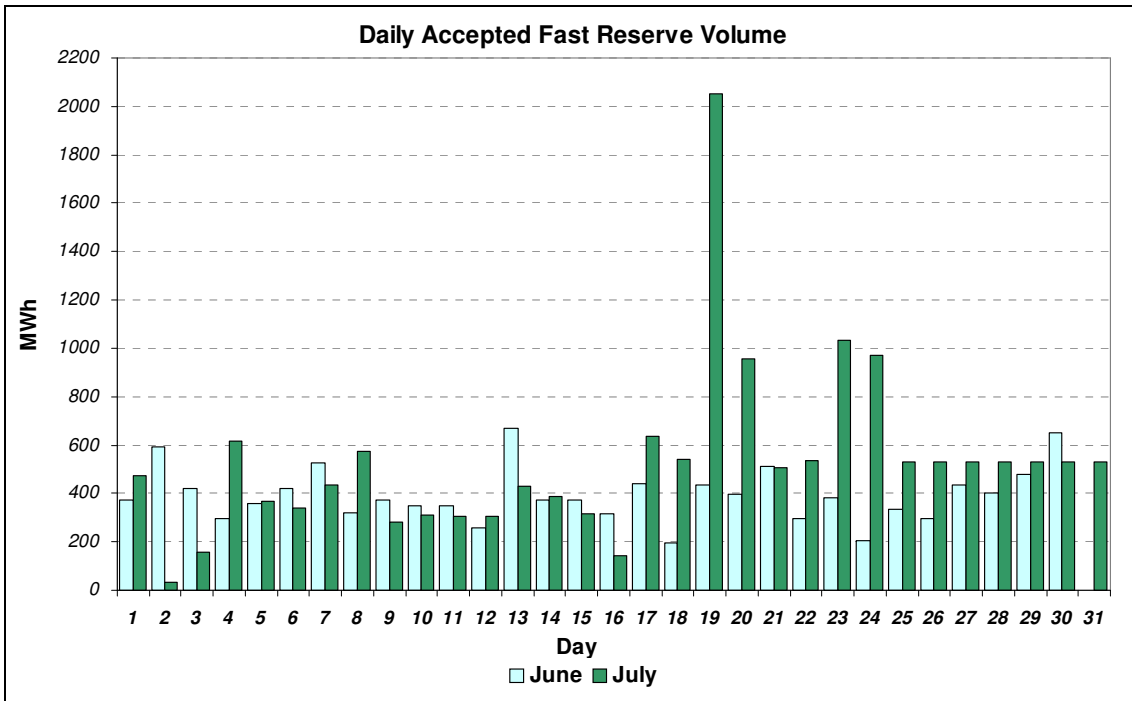


Figure 2

Figure 3 represents this data as total utilisation by Settlement Period across each month. This shows the daily profile of Fast Reserve utilisation.

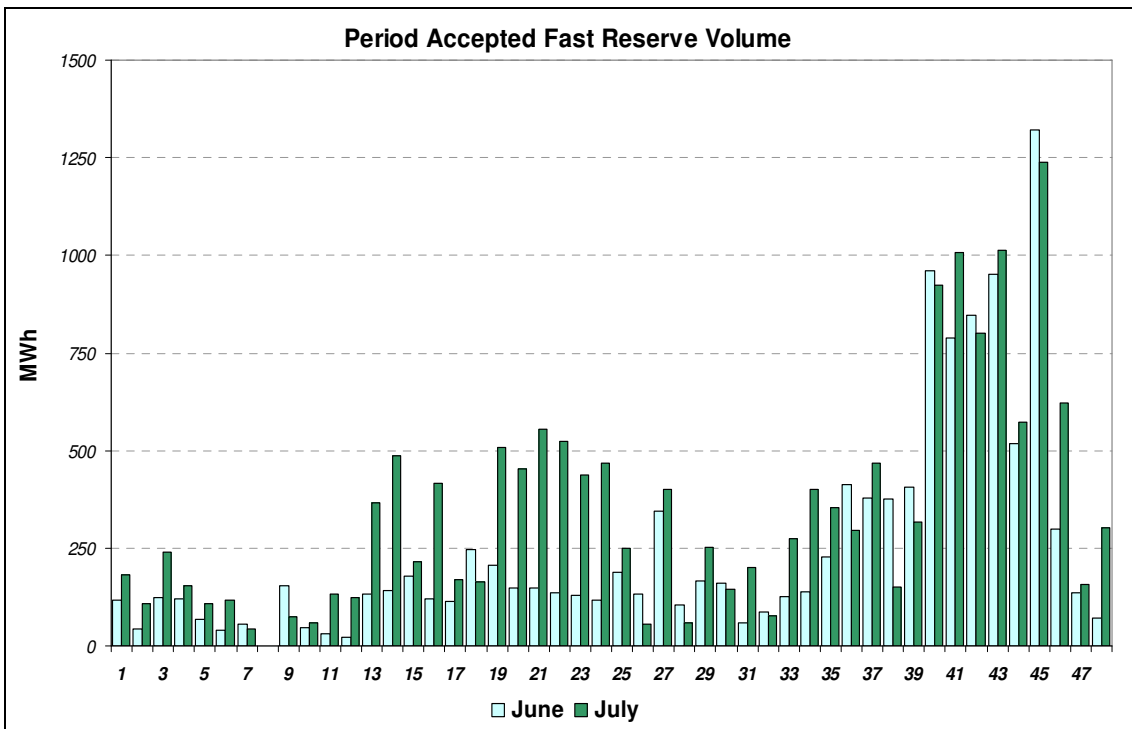


Figure 3

Figure 4 represents the same historical data, as an average utilisation price per Settlement Period for each month.

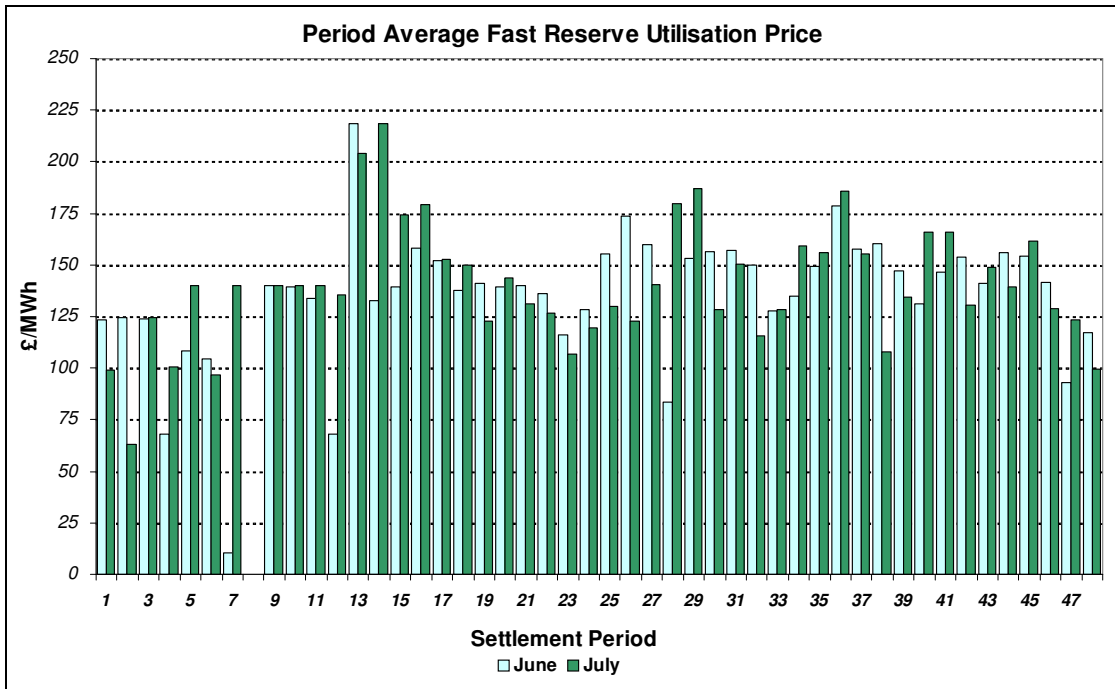


Figure 4

Finally, the same data is used in Figure 5, below, to show the profile of total Fast Reserve utilisation expenditure per Settlement Period for each month.

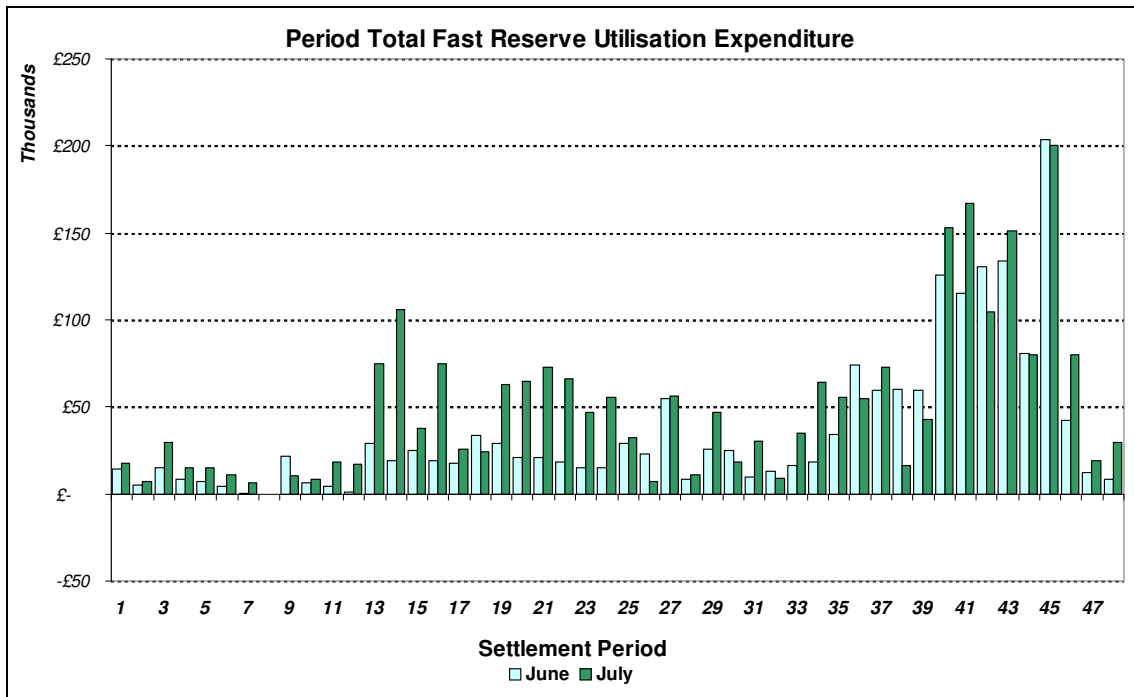


Figure 5

The total volumes of Fast Reserve utilisation of **11.83GWh** for June and **16.44GWh** for July, broken down into price bands are as follows:

| June          | Price band (£/MWh range) | Volume (MWh)    | Average Price (£/MWh) | Cost (£m)     |
|---------------|--------------------------|-----------------|-----------------------|---------------|
| <b>OFFERS</b> | 2000 to 99999            | 0               | n/a                   | n/a           |
|               | 1000 to 2000             | 0               | n/a                   | n/a           |
|               | 300 to 1000              | 40              | 350                   | 0.01          |
|               | 0 to 300                 | 11,080          | 151                   | 1.67          |
| <b>Total</b>  |                          | <b>11.12GWh</b> |                       | <b>£1.69m</b> |
| <b>BIDS</b>   | 0 to 300                 | -570            | 27                    | -0.02         |
|               | -300 to 0                | -100            | -179                  | 0.02          |
|               | -1000 to -300            | -40             | -600                  | 0.02          |
|               | -2000 to -1000           | 0               | n/a                   | n/a           |
|               | -99999 to -2000          | 0               | n/a                   | n/a           |
| <b>Total</b>  |                          | <b>-0.71GWh</b> |                       | <b>£0.03m</b> |
| <b>Total</b>  |                          | <b>11.83GWh</b> |                       | <b>£1.72m</b> |

| July          | Price band (£/MWh range) | Volume (MWh)    | Average Price (£/MWh) | Cost (£m)     |
|---------------|--------------------------|-----------------|-----------------------|---------------|
| <b>OFFERS</b> | 2000 to 99999            | 0               | n/a                   | n/a           |
|               | 1000 to 2000             | 0               | n/a                   | n/a           |
|               | 300 to 1000              | 52              | 335                   | 0.02          |
|               | 0 to 300                 | 14,969          | 159                   | 2.38          |
| <b>Total</b>  |                          | <b>15.02GWh</b> |                       | <b>£2.4m</b>  |
| <b>BIDS</b>   | 0 to 300                 | -1,241          | 32                    | -0.04         |
|               | -300 to 0                | -130            | -173                  | 0.02          |
|               | -1000 to -300            | -44             | -515                  | 0.02          |
|               | -2000 to -1000           | 0               | n/a                   | n/a           |
|               | -99999 to -2000          | 0               | n/a                   | n/a           |
| <b>Total</b>  |                          | <b>-1.41GWh</b> |                       | <b>£0.01m</b> |
| <b>Total</b>  |                          | <b>16.44GWh</b> |                       | <b>£2.41m</b> |

For the month of September 2011, tenders from eligible Service Providers for firm Fast Reserve should be submitted to National Grid by **Monday 1<sup>st</sup> August 2011** (business day 1) for multi-month tenders, or **Wednesday 3<sup>rd</sup> August 2011** (business day 3) for single month tenders. National Grid will notify Service Providers of the outcome of the tender assessment by **Friday 12<sup>th</sup> August 2011** (business day 10).

Tenders should be sent by post for the attention of:

Bea Ennim  
Network Operations  
National Grid Electricity Transmission plc  
National Grid House  
Warwick Technology Park  
Gallows Hill  
Warwick  
CV34 6DA