

# Operational Update

---

Paul Auckland  
Network Operations

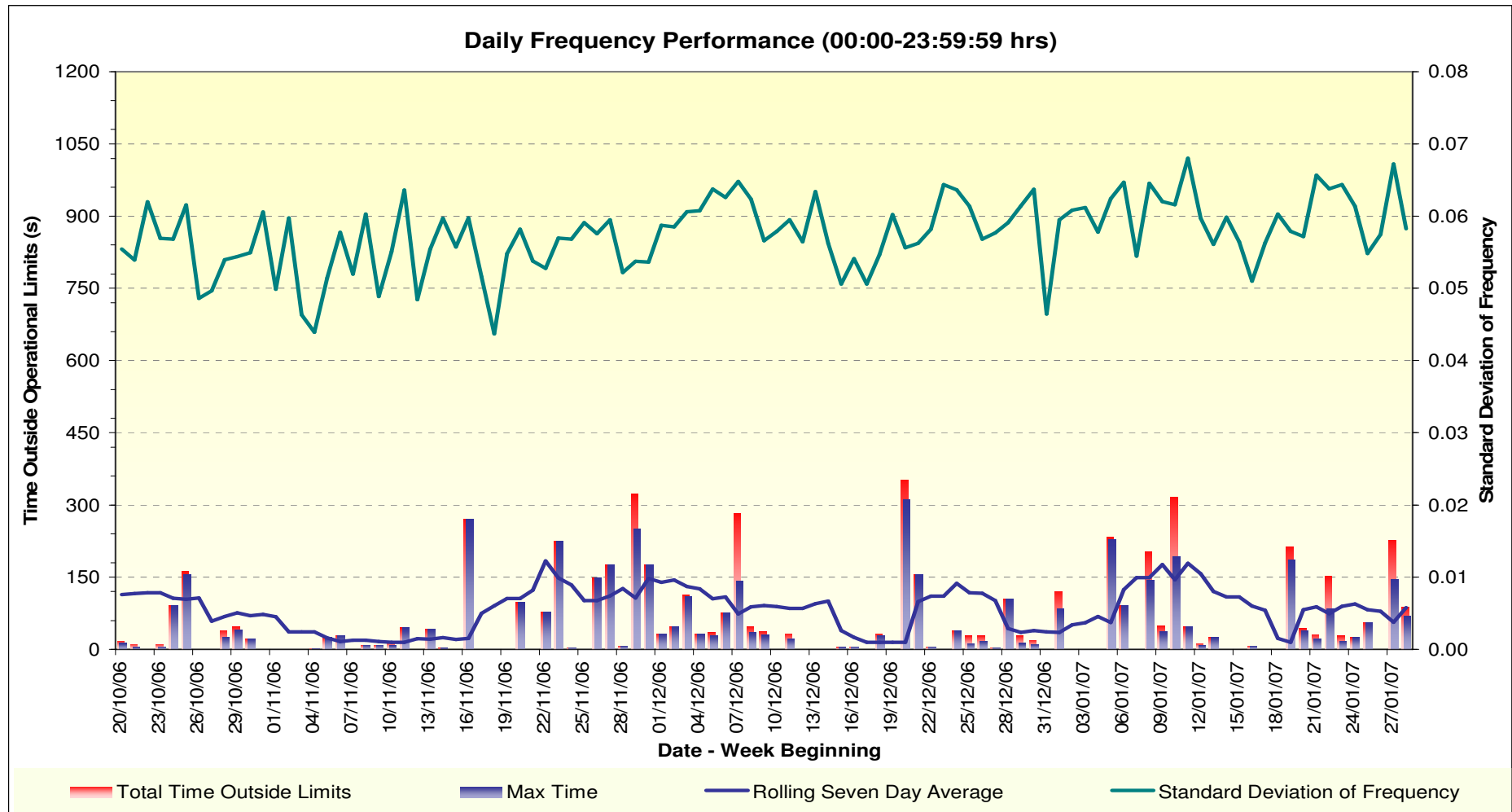
# Agenda

---

- Recent Operational Performance
- January storms
- BPS report
- System Operator cost update

# Frequency Performance

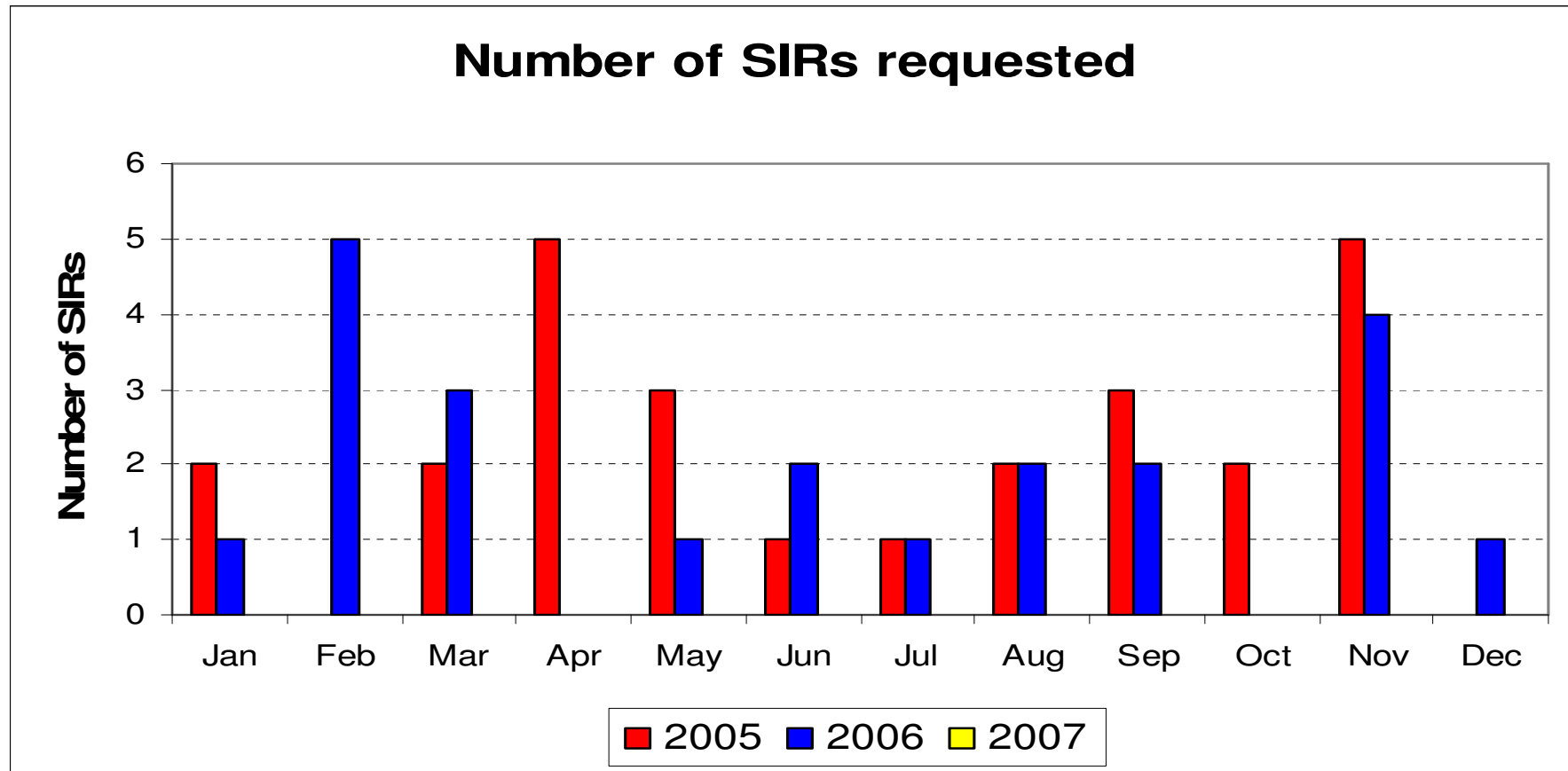
## Recent Daily Excursions



- No significant frequency deviations to report in Dec/Jan

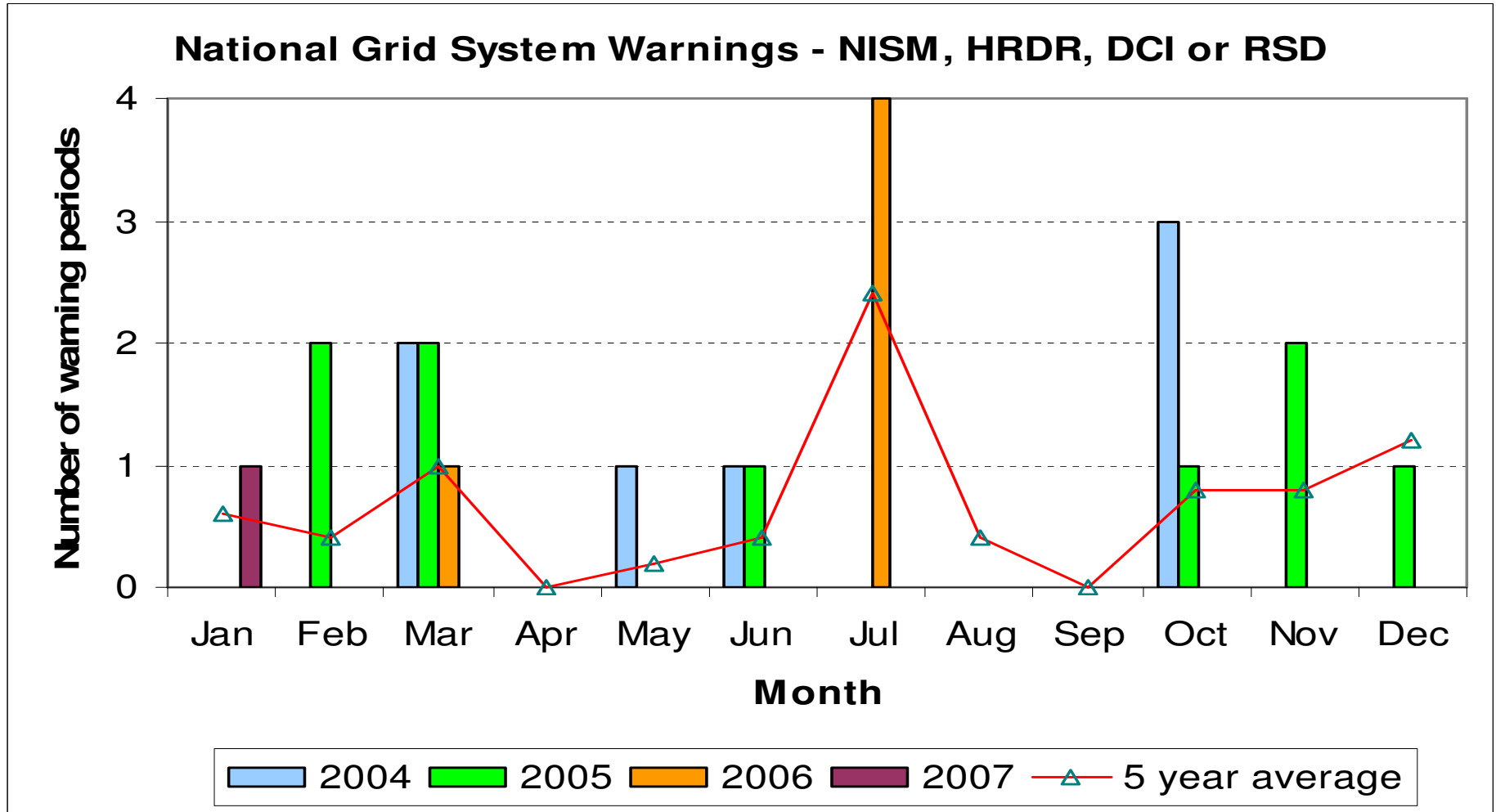
# Generator Performance

## SIR performance



- One SIR in December, none in January.
- 2006 total was 4 less than 2005

# System Warnings



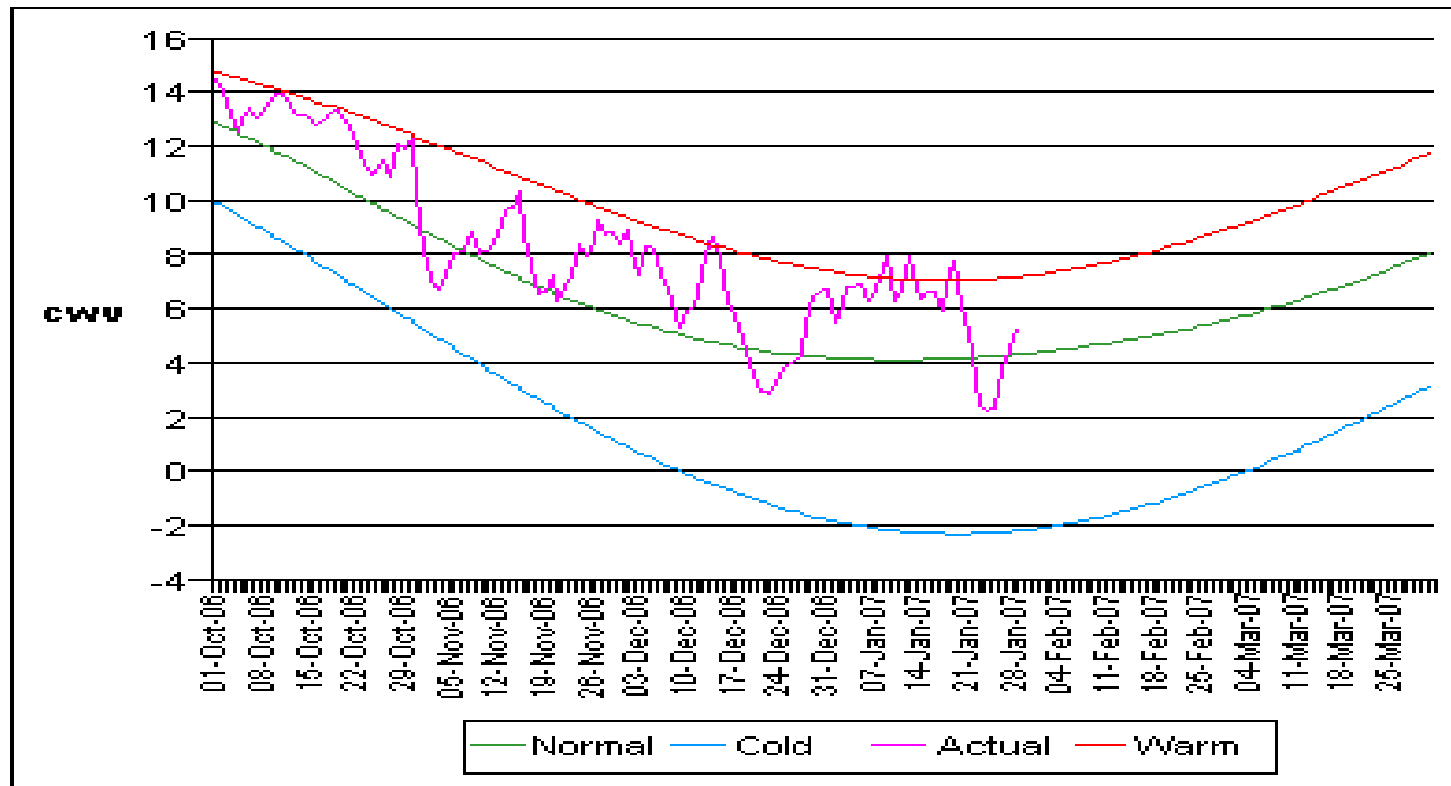
# System Warnings

---

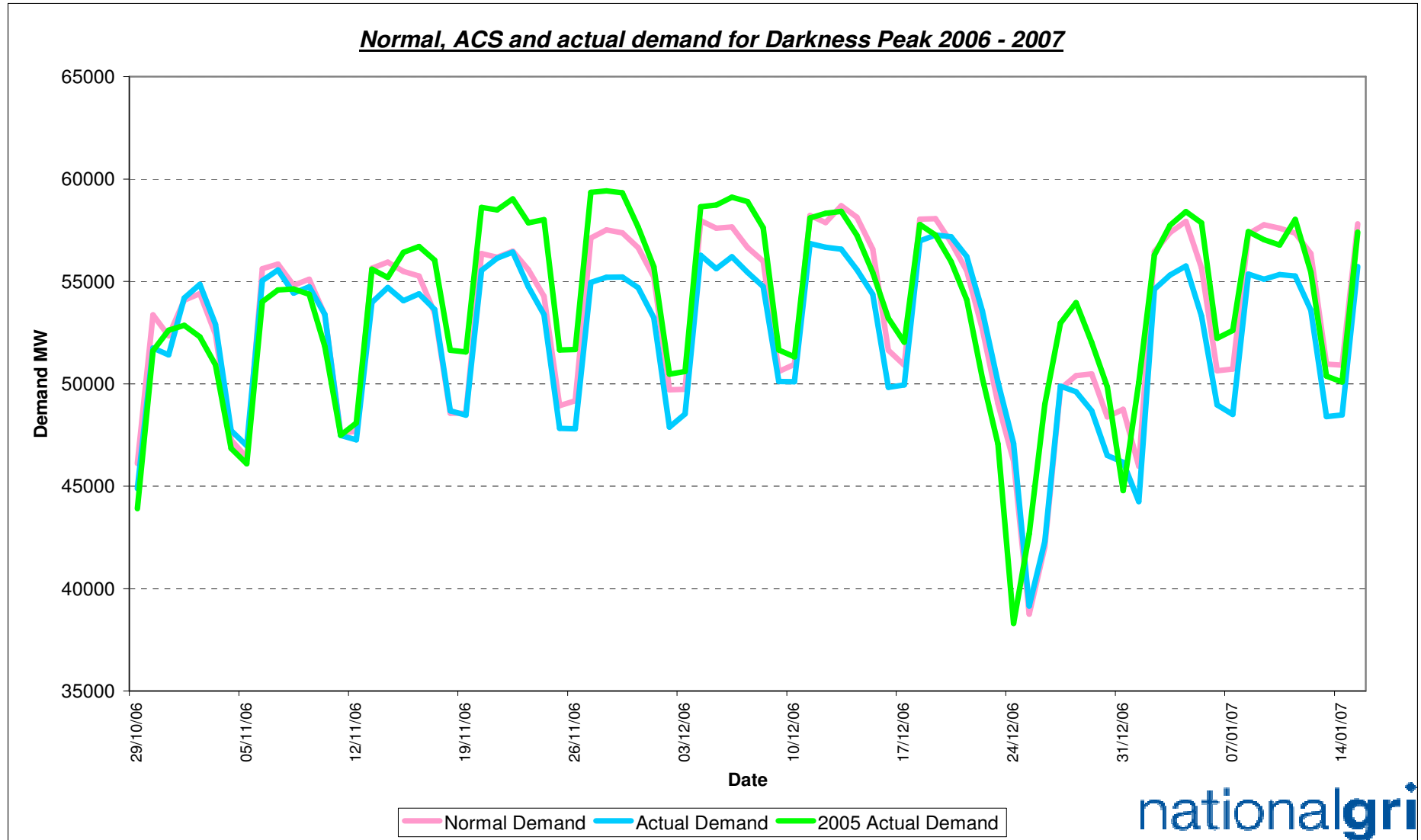
- ◆ One System Warning issued – Risk of System Disturbance on 18 January 2007
- ◆ Localised warning targeted at Generators / DNOs in the North West
- ◆ No warnings issued relating to shortage of plant margin since NISM Thu 27 July.
- ◆ Mainly due to lower demands during the mildest autumn since records began
- ◆ Note: March has historically seen more system warnings than any other month over the past 3 years

# Warmest Autumn in 347 Years

- ◆ The Met Office confirms that the autumn 2006 has been the warmest in the last 347 years across central parts of the UK.
- ◆ The provisional UK-wide mean temperature for autumn was 11.3 °C, beating the previous record set in 2001 of 10.5 °C, in a temperature series that began in 1914.



# Demand up to 4GW lower than last year



# January Storms

---

# January storms

---

- ◆ Severe storms were experienced across UK on Thursday 18 January
- A period of severe weather was forecast by the Met Office for the whole of England and Wales.
- Severe Weather Warnings had been issued on Monday and updated on Tuesday and Wednesday.
- Severe Gale Force winds (gusts of 70mph+) and significant rain totals were forecast.
- Reported as the worst storms for 17 years

# Risk of System Disturbance - Thursday 18 January

---

- ◆ Likelihood of system disruption
- ◆ System Warning - Risk of System Disturbance issued by control room (13:45 – 21:00 / 24:00)
- ◆ Localised warning targeted at Generators / DNOs in North West area
- ◆ This was the first one since 4 July 2001 (severe lightning storm across South Wales)
- ◆ Users are requested to warn their operational staff and maintain plant and apparatus in a condition best able to withstand the anticipated disturbance.

# Preparatory actions taken by National Grid

---

- A number of mitigating preparatory actions were taken including:
  - Strategic manning of substations (40-50 key sites)
  - Additional Control Room manning (extra staff on switching desks)
  - Strategic running of additional southern generation

# Multiple faults

---

- Multiple circuit trippings occurred
- At least 21 separate trips affecting 15 circuits – most only for DAR (Delayed Auto-Reclose) time and successfully reclosed.
- Field staff investigated reports of damage to eight circuits, with the North West the worst hit.

# Line damage

---



# Repair work

---



# Restoration actions taken by National Grid

---

- Foot patrols were carried out along a 30 mile stretch of line together with aerial surveys using the NG helicopter
- ◆ Around 50 staff were involved in the investigation and repair operation
- ◆ No losses of supply occurred from the Transmission system during one of the worst weather related incidents we have ever had to deal with
- ◆ A team effort involving close liaison and support from Generators and DNOs to minimise the impact of the storm on system security and electricity supply

# Sixth Balancing Principles Statement report

Reports compliance with BPS for 1 Oct 2005 to 30 Sep 2006 in line with Licence Condition C16.



## Balancing Principles Statement

Report for the period 1 October 2005 to 30 September 2006



November 2006



**nationalgrid**

Clean audit opinion from PwC.

• This latest report can be viewed on our website at the following address:

• <http://www.nationalgrid.com/uk/Electricity/Balancing/transmissionlicensestatements/>

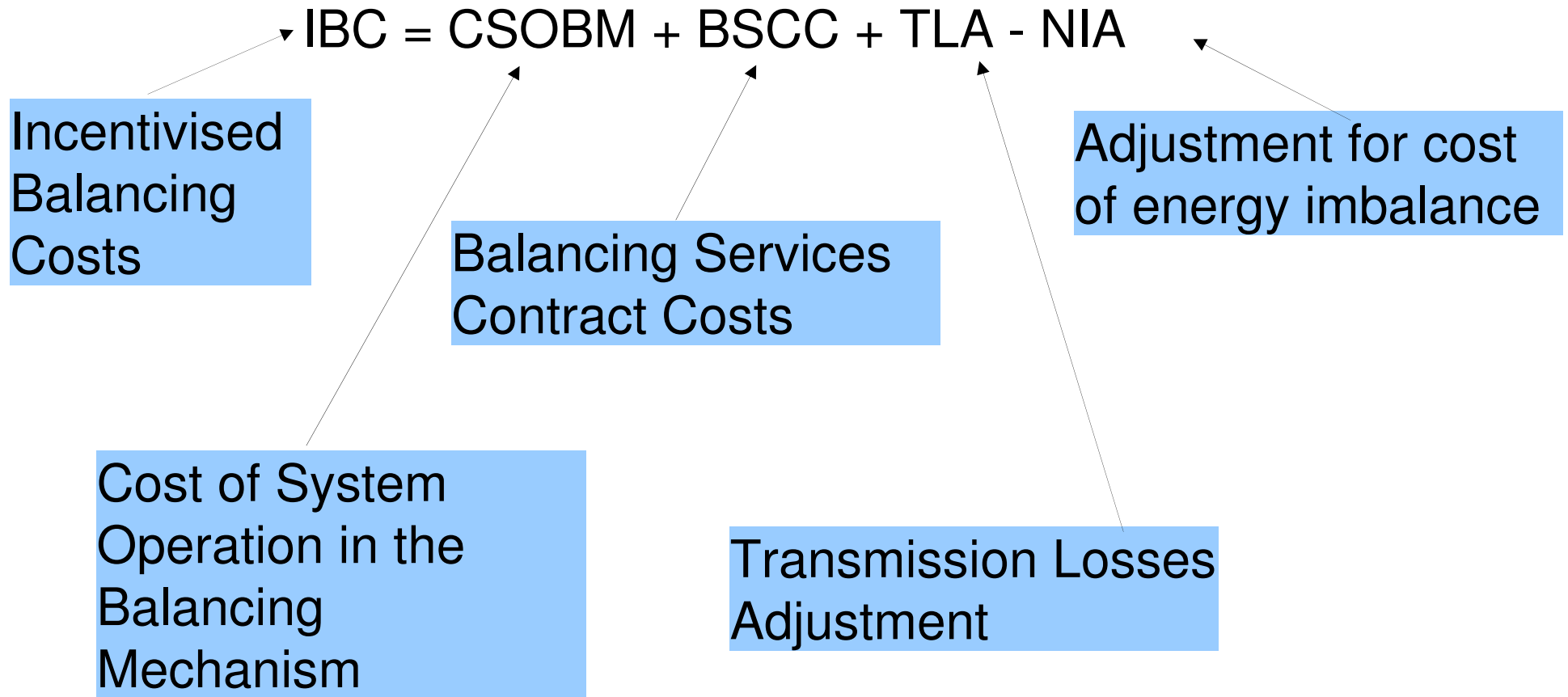
**nationalgrid**

# System Operator cost update

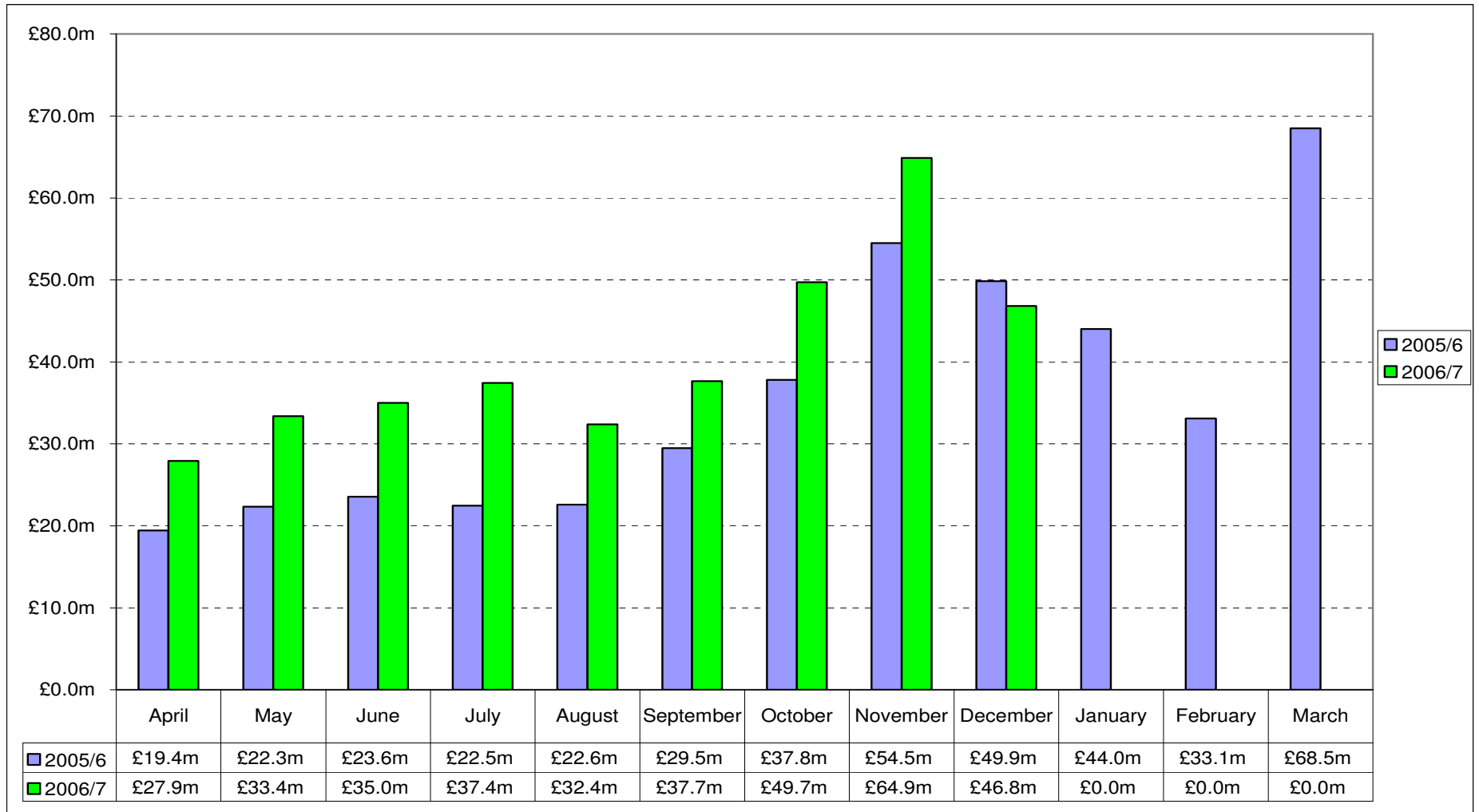
---

# IBC Component Breakdown

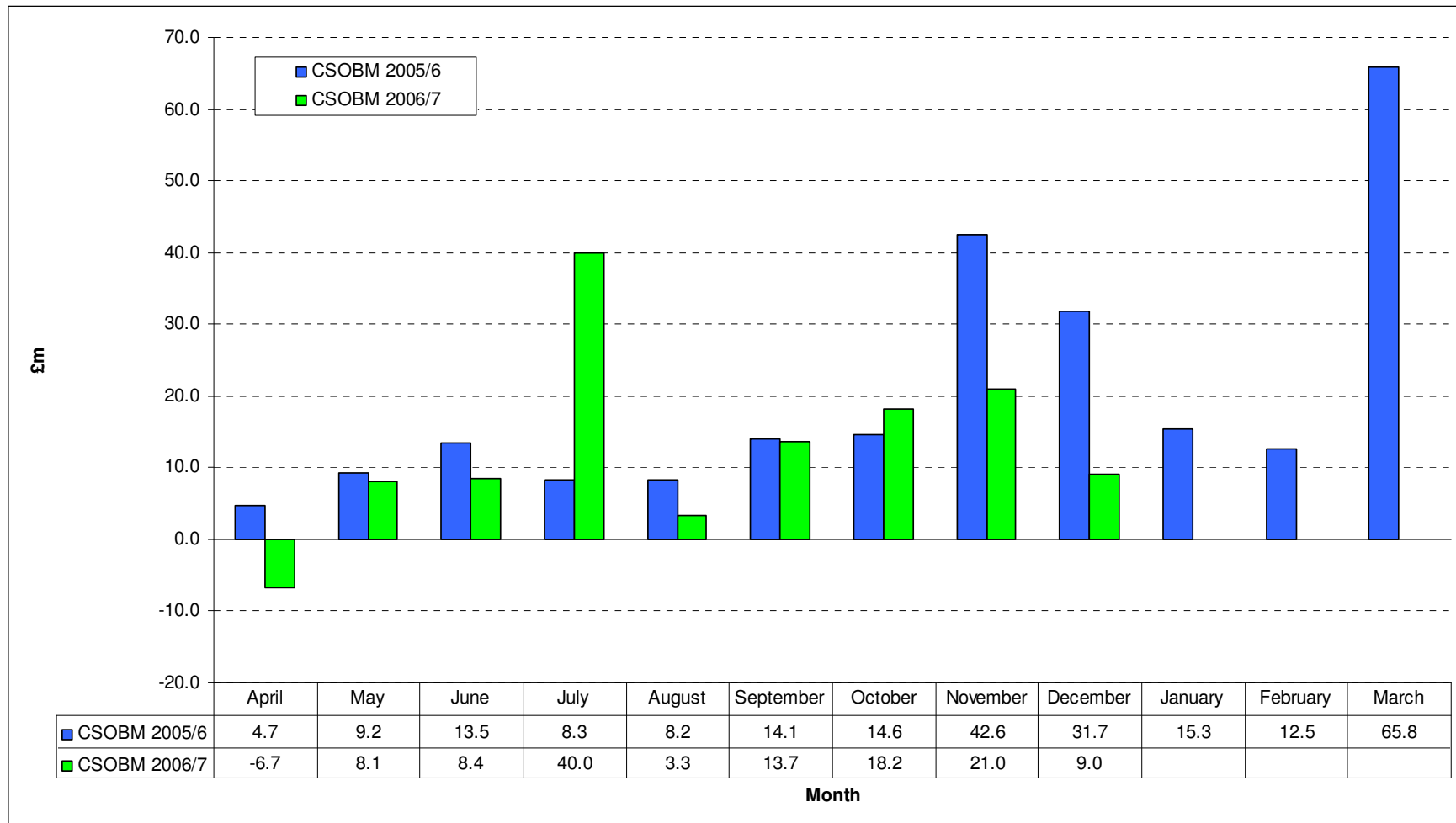
---



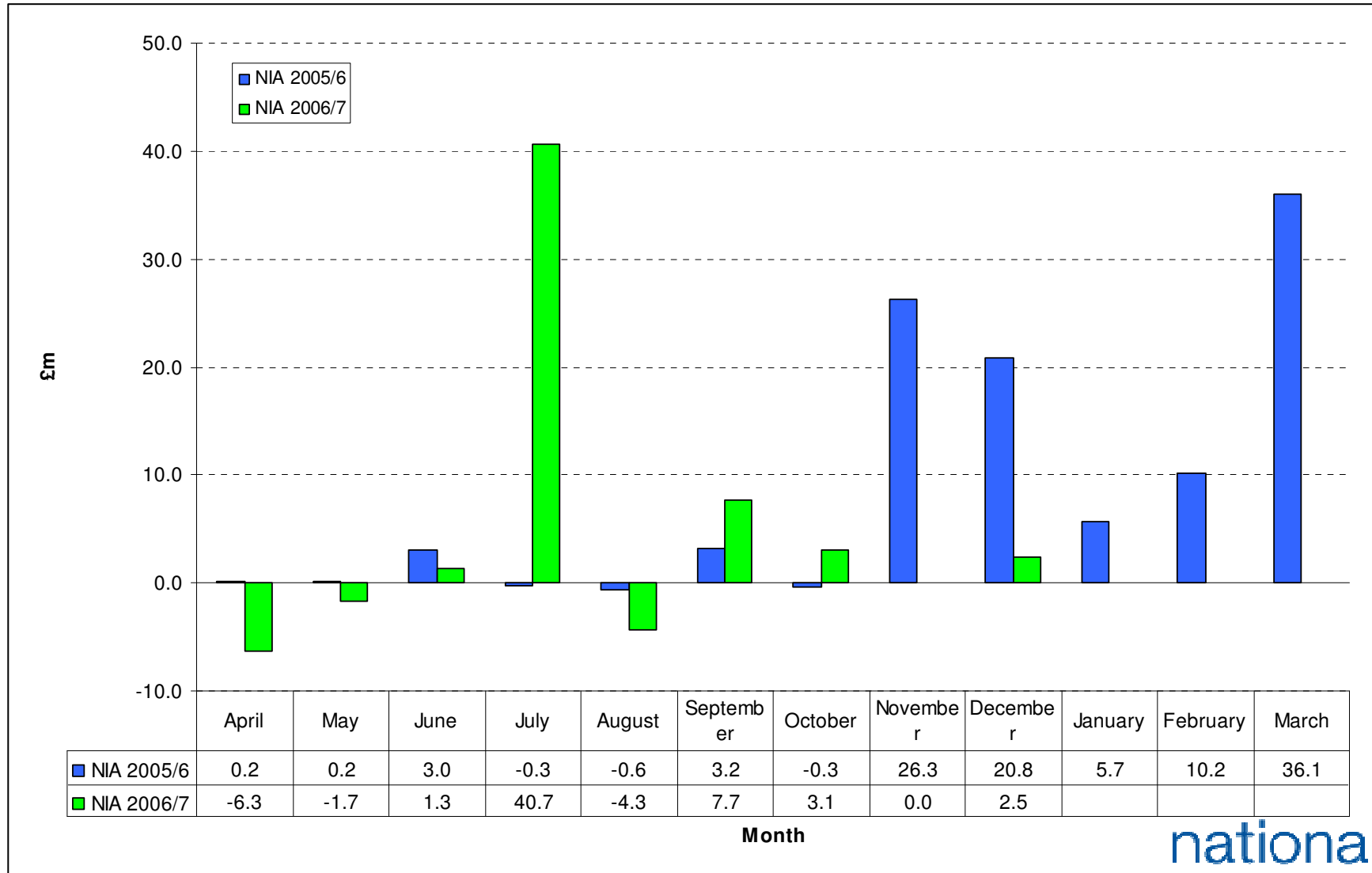
# 2005/6 and 2006/7 monthly IBC



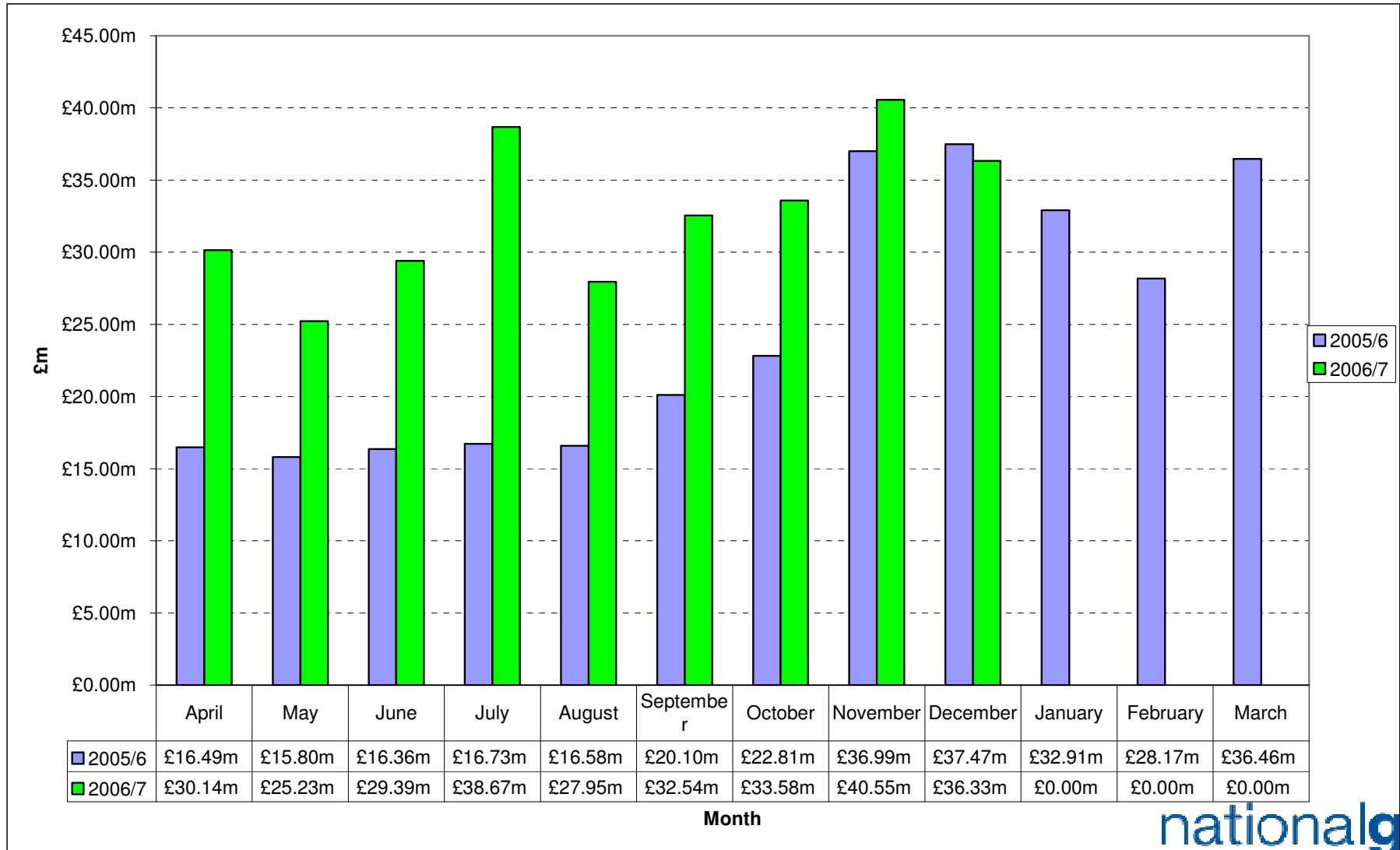
# Balancing Mechanism Spend (CSOBM) 2005/6 and 2006/7 to date



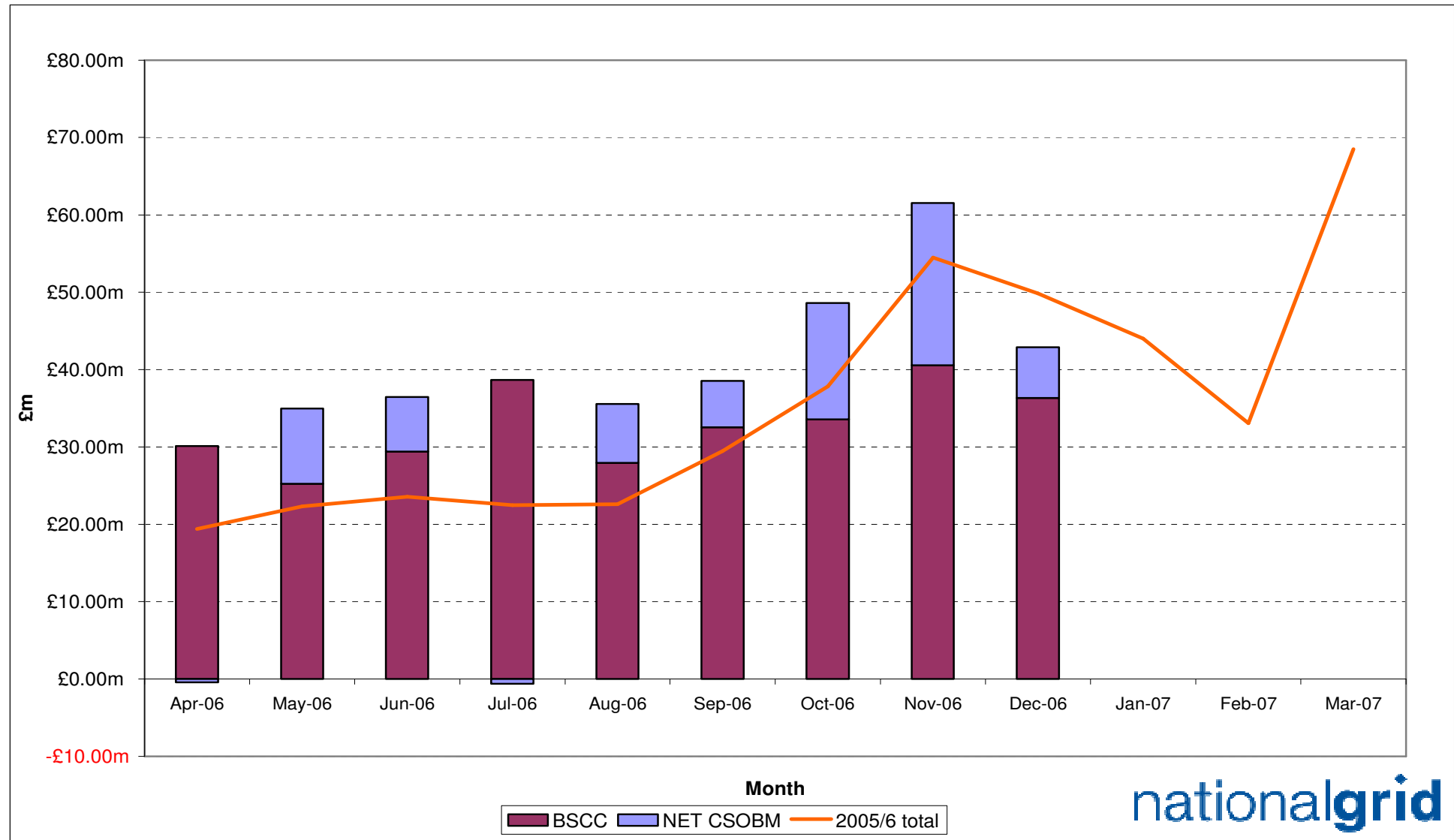
# Net Imbalance Adjustment - 2005/6 and 2006/7



# Balancing Service Contract Costs



# 2006/7 monthly IBC breakdown into (CSOBM-NIA) and BSCC compared with 2005/6



# Forecast 2006/7 outturn

---

- ◆ During 2006/7, a BSIS incentive scheme for external costs is not in place
- ◆ Ofgem are scrutinising our system operation costs under their powers
- ◆ The latest forecast for financial year 2006/07 outturn is **£496m** assuming the same incentive mechanism as last year (2005/6)
- ◆ Our forecast has since increased since the last Forum based on an expensive November balanced to some extent by a mild December.

# Monthly and Cumulative IBC 2006/7

