

Fast Reserve

Market Information for Tenders for September 2008

National Grid publishes this information, in order to inform potential participants for the Fast Reserve tender round for September 2008.

Fast Reserve Availability

Our indicative requirement for Fast Reserve in September 2008 is shown on a Settlement Period basis in Figure 1. This requirement covers weekdays, Saturdays, Sundays and Bank Holidays.

Fast Reserve Daily Requirement for September 2008

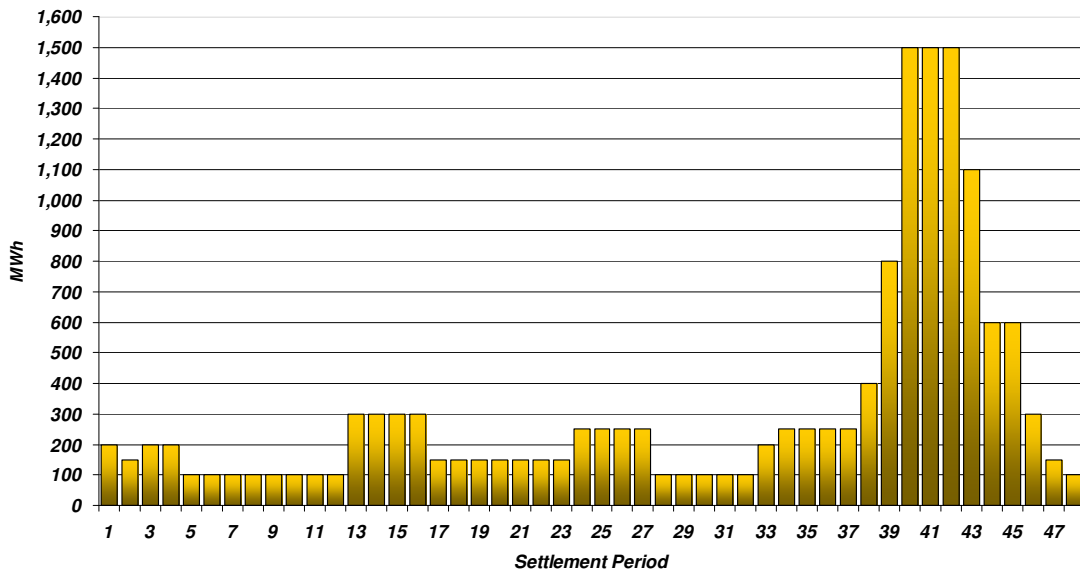


Figure 1

Figure 1 gives an indication of the times of day when Fast Reserve is most useful to National Grid. The actual amount of Fast Reserve "holding" varies from day to day, according to system conditions.

Fast Reserve Utilisation

Figure 2 shows the daily utilisation of Fast Reserve in the BM and elsewhere during June 2008 and July 2008. The BM information is based on the aggregate of Offers plus Bids accepted to provide Fast Reserve or an equivalent service.

Daily Accepted Fast Reserve Volume

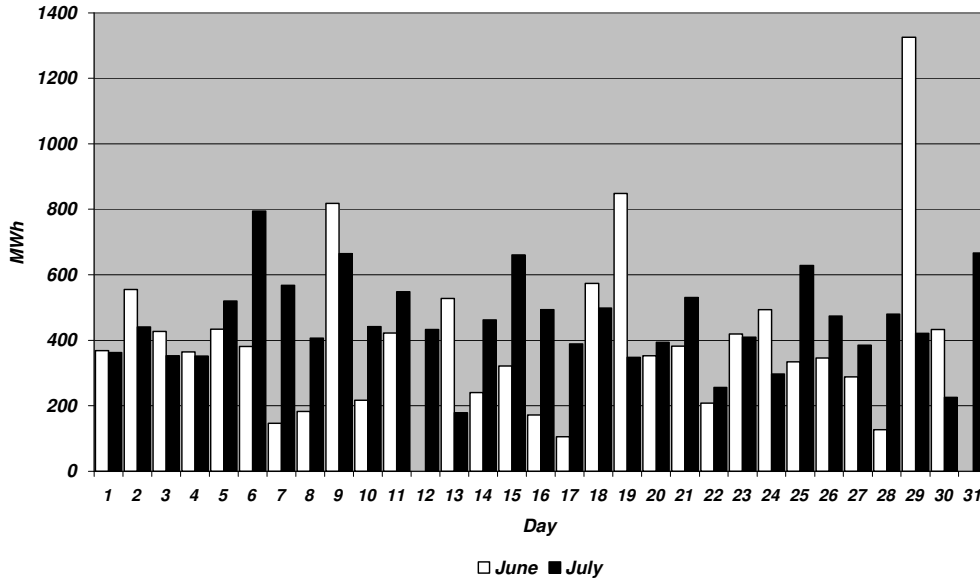


Figure 2

Figure 3 represents this data as total utilisation by Settlement Period across each month. This shows the daily profile of Fast Reserve utilisation.

Period Accepted Fast Reserve Volume

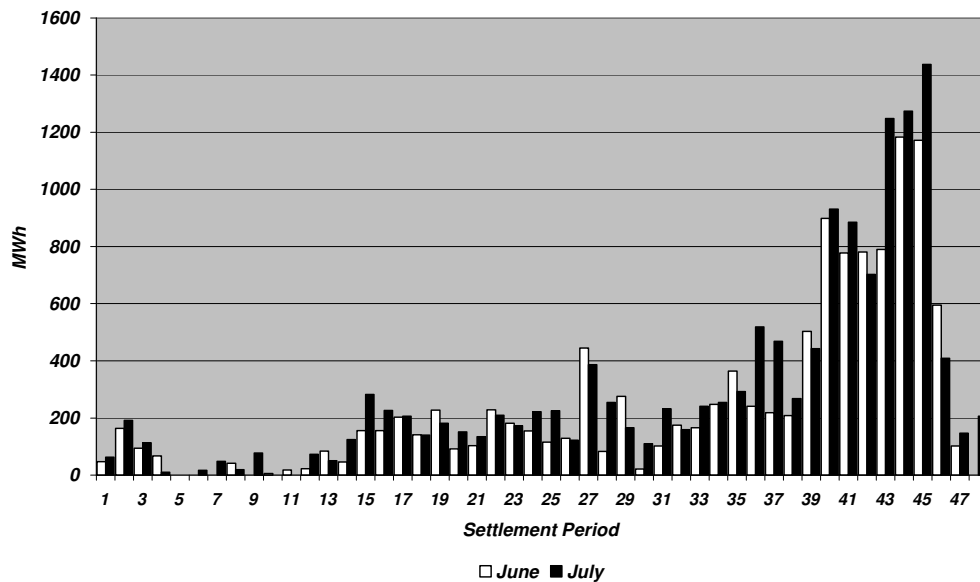


Figure 3

Figure 4 represents the same historical data, as an average utilisation price per Settlement Period for each month.

Period Average Fast Reserve Utilisation Price

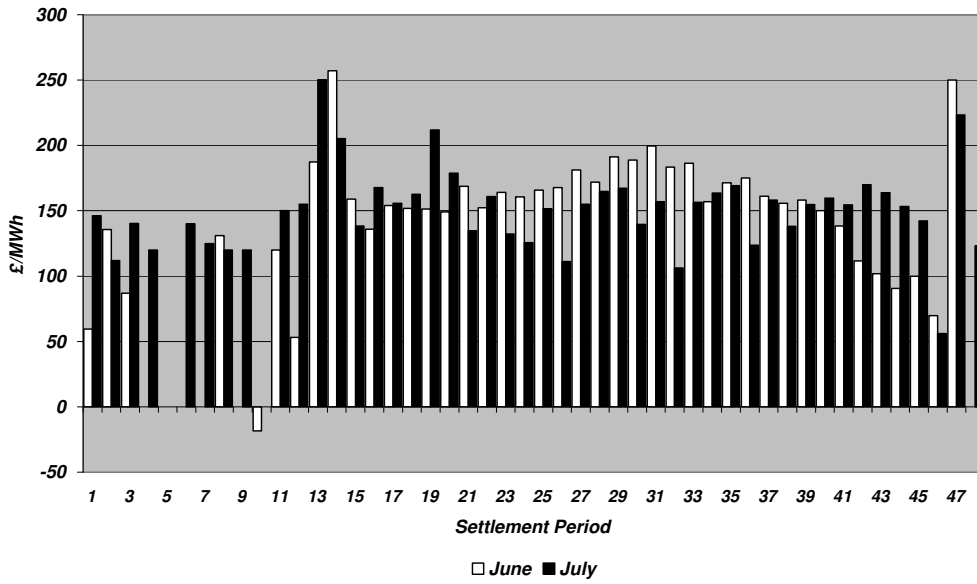


Figure 4

Finally, the same data is used in Figure 5, below, to show the profile of total Fast Reserve utilisation expenditure per Settlement Period for each month.

Period Total Fast Reserve Utilisation Expenditure

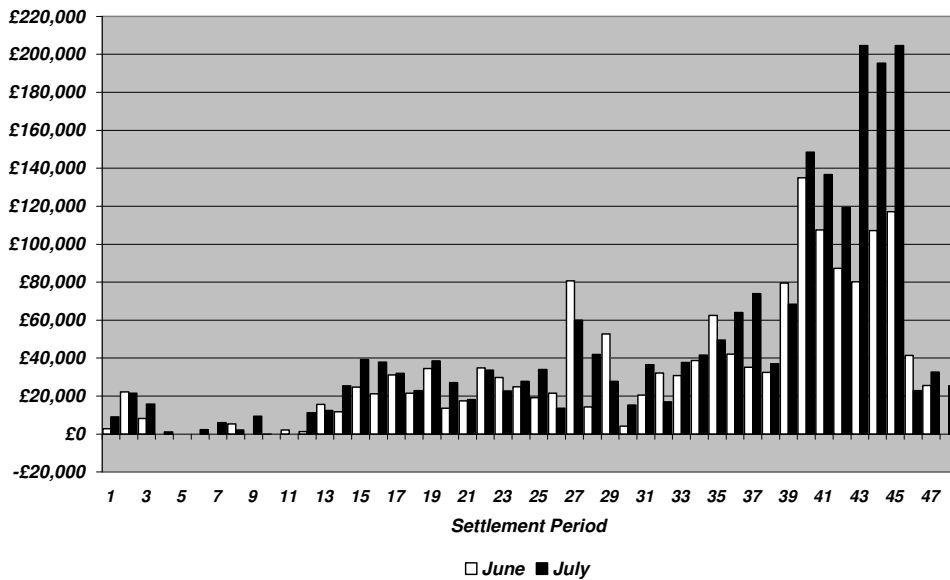


Figure 5

The total volumes of Fast Reserve utilisation of **11.82GWh** for June 2008 and **14.08GWh** for July 2008, broken down into price bands are as follows:

June	Price band (£/MWh range)	Volume (MWh)	Average Price (£/MWh)	Cost (£m)
OFFERS	2000 to 99999	0	n/a	n/a
	1000 to 2000	0	n/a	n/a
	300 to 1000	0	n/a	n/a
	0 to 300	9,311	174	1.62
Total		9.31GWh		£1.62m
BIDS	0 to 300	-2,449	18	-0.04
	-300 to 0	-50	-188	0.01
	-1000 to -300	-10	-400	0.00
	-2000 to -1000	0	n/a	n/a
	-99999 to -2000	0	n/a	n/a
Total		-2.51GWh		£-0.03m
Total		11.82GWh		£1.59m

July	Price band (£/MWh range)	Volume (MWh)	Average Price (£/MWh)	Cost (£m)
OFFERS	2000 to 99999	0	n/a	n/a
	1000 to 2000	0	n/a	n/a
	300 to 1000	19	318	0.01
	0 to 300	12,191	173	2.11
Total		12.21GWh		£2.12m
BIDS	0 to 300	-1,688	30	-0.05
	-300 to 0	-105	-191	0.02
	-1000 to -300	-81	-458	0.04
	-2000 to -1000	0	n/a	n/a
	-99999 to -2000	0	n/a	n/a
Total		-1.87GWh		£0.01m
Total		14.08GWh		£2.12m

For the month of September 2008, tenders from eligible Service Providers for firm Fast Reserve should be submitted to National Grid by Thursday 14th August 2008 (business day 10). National Grid will notify Service Providers of the outcome of the tender assessment by Thursday 21st August 2008 (business day 15).

Tenders should be sent for the attention of:

Bea Ennim
Network Operations
National Grid Electricity Transmission plc
National Grid House
Warwick Technology Park
Gallows Hill
Warwick
CV34 6DA

Tenders can be sent by fax to Bea Ennim on 01926 656612.