

# Fast Reserve

## Market Information for Tenders for July 2004

National Grid Transco publishes this information, in order to inform potential participants for the Fast Reserve tender round for July 2004.

### Fast Reserve Availability

Our indicative daily requirement for Fast Reserve in July is shown on a Settlement Period basis in Figure 1. This requirement covers weekdays, Saturdays and Sundays.

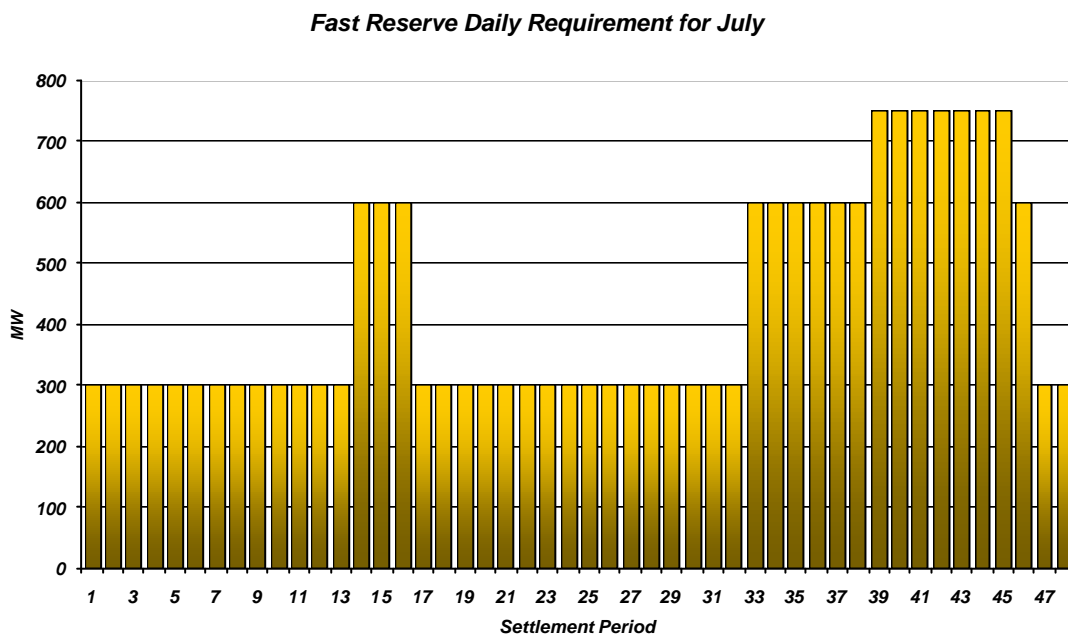


Figure 1

This figure gives an indication of the times of day when Fast Reserve is most useful to us. The actual amount of Fast Reserve "holding" varies from day to day, according to system conditions, but on average amounts to approximately one half of these requirements.

### Fast Reserve Utilisation

Figure 2 shows the daily utilisation of Fast Reserve in the BM and elsewhere during April (1<sup>st</sup> – 30<sup>th</sup> April 2004) and May (1<sup>st</sup> – 31<sup>st</sup> May 2004). The BM information is based on the aggregate of Offers plus |Bids| accepted to provide Fast Reserve.

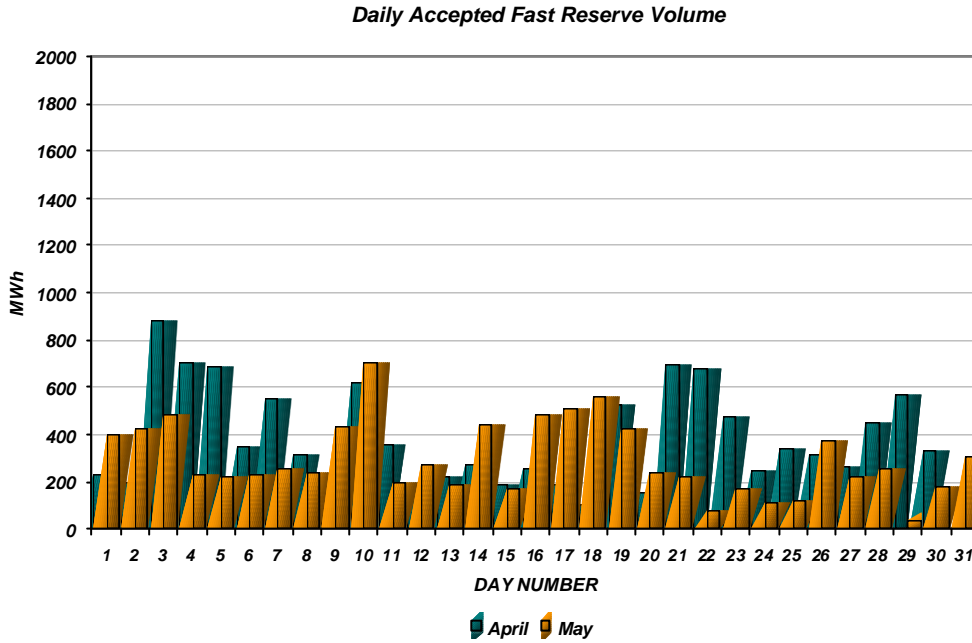


Figure 2

Figure 3 re-presents this data, as an average utilisation per Settlement Period across each month. This shows the daily profile of Fast Reserve utilisation.

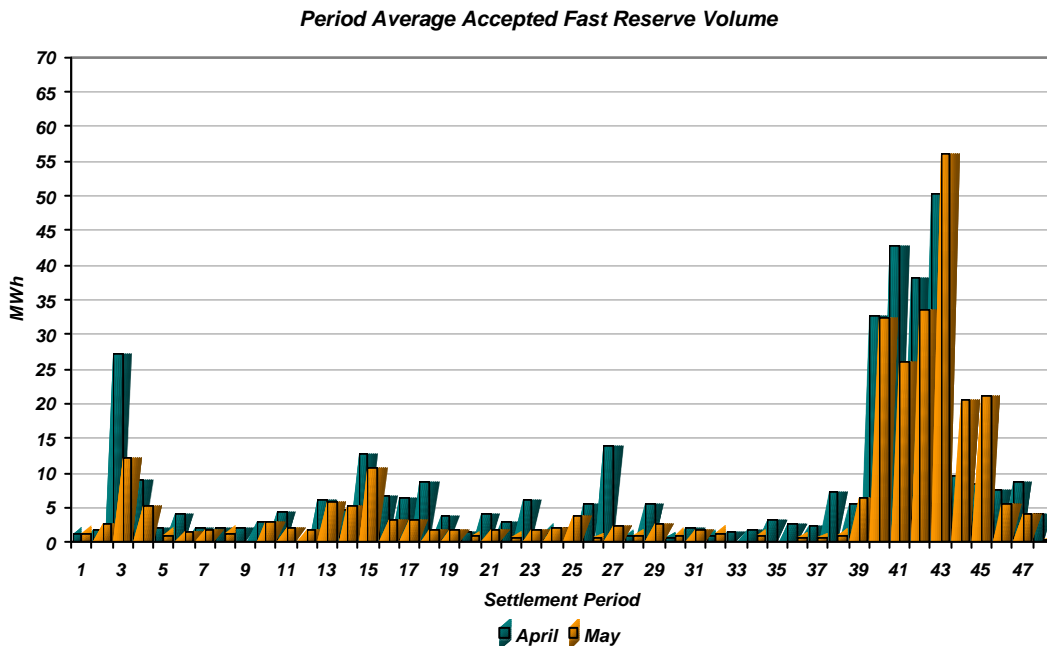


Figure 3

The total volumes of Fast Reserve utilisation of **11.4 GWh** for April and **9.2 GWh** for May break down into price bands as follows:

April	Price band (£/MWh range)	Volume (MWh)	Average Price (£/MWh)	Cost (£m)
<b>OFFERS</b>	2000 to 10000	0	n/a	n/a
	1000 to 2000	14	1,800	0.02
	300 to 1000	51	400	0.02
	0 to 300	10,560	131	1.38
<b>Total</b>		<b>10.6 GWh</b>		<b>£1.43 m</b>
<b>BIDS</b>	0 to 300	0	n/a	n/a
	-300 to 0	-750	-51	0.04
	-1000 to -300	-56	-543	0.03
	-2000 to -1000	-18	-1,500	0.03
	-10000 to -2000	0	n/a	n/a
<b>Total</b>		<b>-0.8 GWh</b>		<b>£0.09 m</b>
<b>Total</b>		<b>11.4 GWh</b>		<b>£1.52 m</b>

May	Price band (£/MWh range)	Volume (MWh)	Average Price (£/MWh)	Cost (£m)
<b>OFFERS</b>	2000 to 10000	0	n/a	n/a
	1000 to 2000	0	n/a	n/a
	300 to 1000	36	450	0.02
	0 to 300	8,242	127	1.05
<b>Total</b>		<b>8.3 GWh</b>		<b>£1.06 m</b>
<b>BIDS</b>	0 to 300	0	n/a	n/a
	-300 to 0	-855	-45	0.04
	-1000 to -300	-34	-564	0.02
	-2000 to -1000	-9	-1,800	0.02
	-10000 to -2000	0	n/a	n/a
<b>Total</b>		<b>-0.9 GWh</b>		<b>£0.07 m</b>
<b>Total</b>		<b>9.2 GWh</b>		<b>£1.14 m</b>

The above charts and tables show that from April to May overall Fast Reserve utilisation fell by ~ 19%.

For July, the demand shape will follow a Summer profile. Fast Reserve utilisation patterns for July 2004 are expected to be similar to those seen in July 2003. Overall Fast Reserve utilisation is forecast to outturn similar to July 2003.

For the month of **July**, tenders from eligible Service Providers for a firm Fast Reserve service should be submitted to National Grid by close of business on Monday 14<sup>th</sup> June 2004. National Grid Transco will notify Service Providers of the outcome of the tender assessment by Monday 21<sup>st</sup> June 2004.

Tenders should be sent for the attention of:

Hannah Morgan  
Operations & Trading  
National Grid Transco plc  
NGT House  
Warwick Technology Park  
Gallows Hill  
Warwick  
CV34 6DA

Tenders can be sent by fax to Hannah Morgan on 01926 656612.