

# Easington Constraints Dec '06 & Jan '07

---

# ASEP Capacity Regime – 2000 to date

---

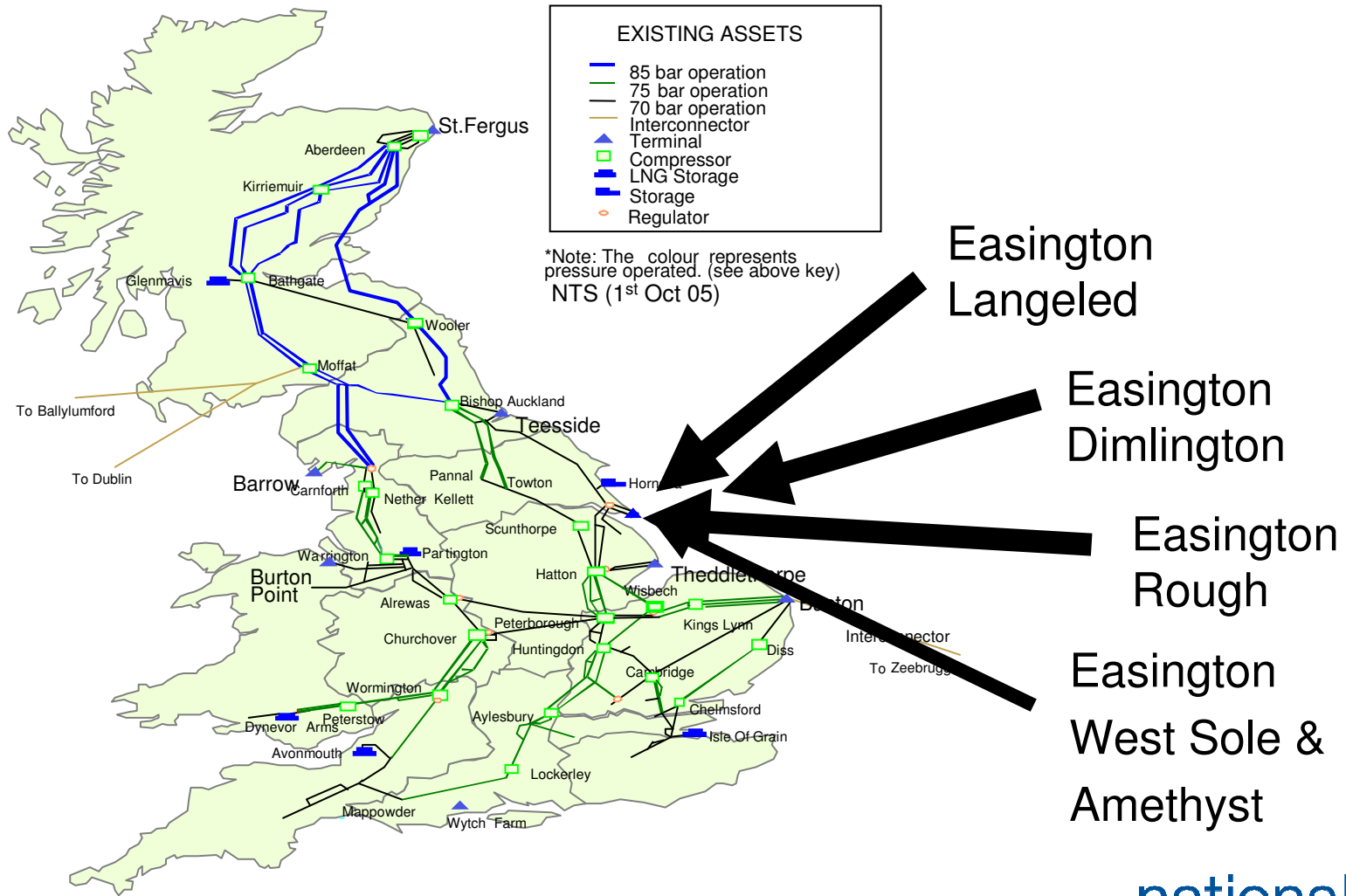
- ◆ The regime was introduced after the BC99 review to provide investment signals of where and when the market required entry capacity
- ◆ Aggregate System Entry Capacity is sold by Terminal in a series of auctions
  - ◆ A Firm Capacity right to land gas requires Users' financial commitment
  - ◆ 'Stretch' Baseline targets are set for NG which assume the maximum potential terminal flow with all associated terminal inputs minimised
  - ◆ Capacity is made available in the investment window up to and beyond baseline
  - ◆ In the constrained window (<4 years) , capacity is consistently made available up to the unsold baseline level
- ◆ NG makes available Interruptible capacity in the short term, based upon the UNC methodology of the amount of unutilised firm capacity rights.

# ASEP Capacity Regime – Constraint Management

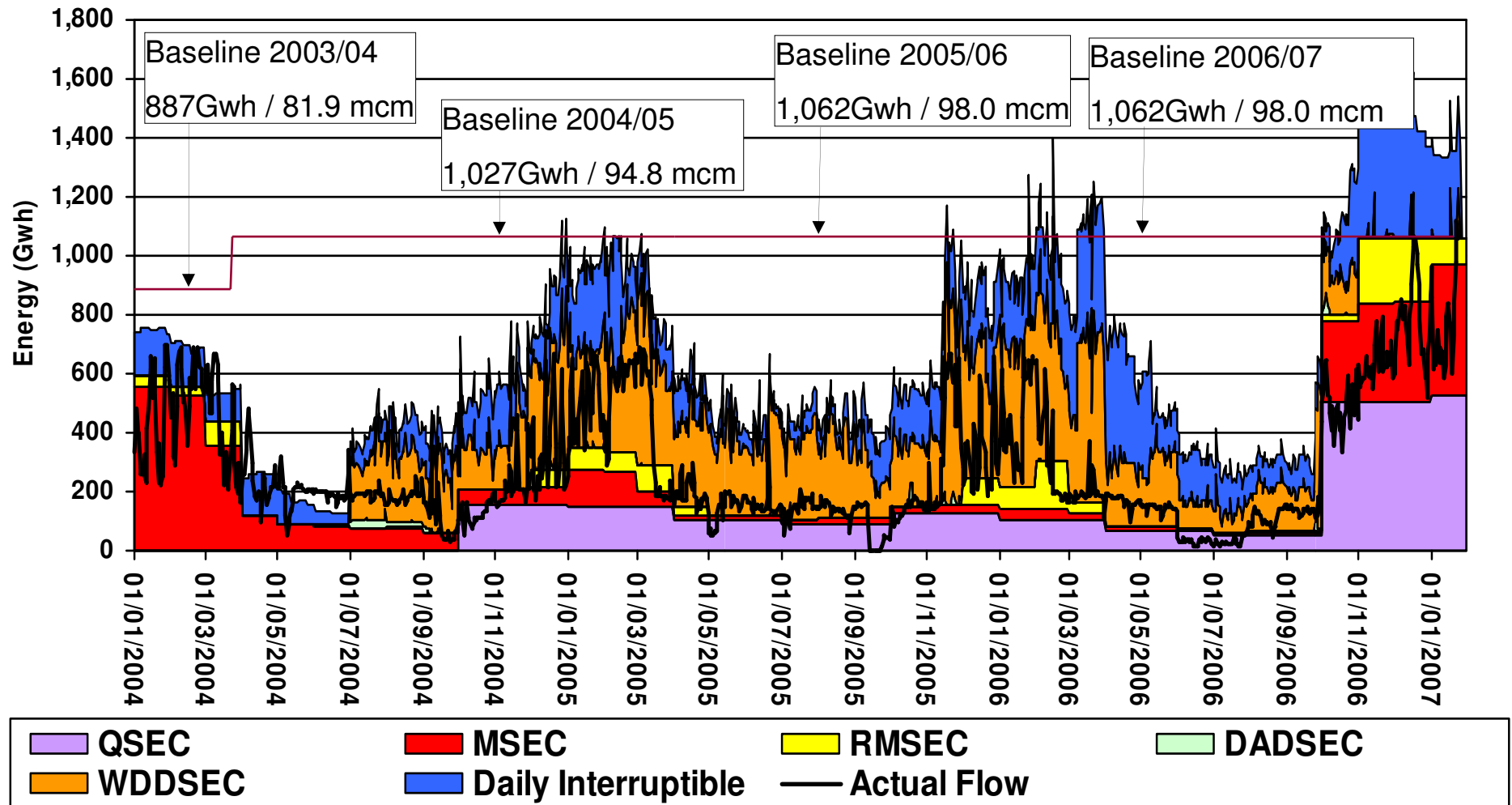
---

- ◆ To ensure Firm rights can be honoured Interruption occurs when notified or anticipated inputs outstrip firm rights and/ or NTS capability
- ◆ Buy Backs are undertaken if its necessary to bring aggregate Daily firm holdings within the physical capability of the NTS
- ◆ A Terminal Flow Advice (TFA) is issued to connected system operators when actual or notified rates of entry would cause the NTS to breach its Maximum Permitted Pipeline Operating Pressure (MPOP)

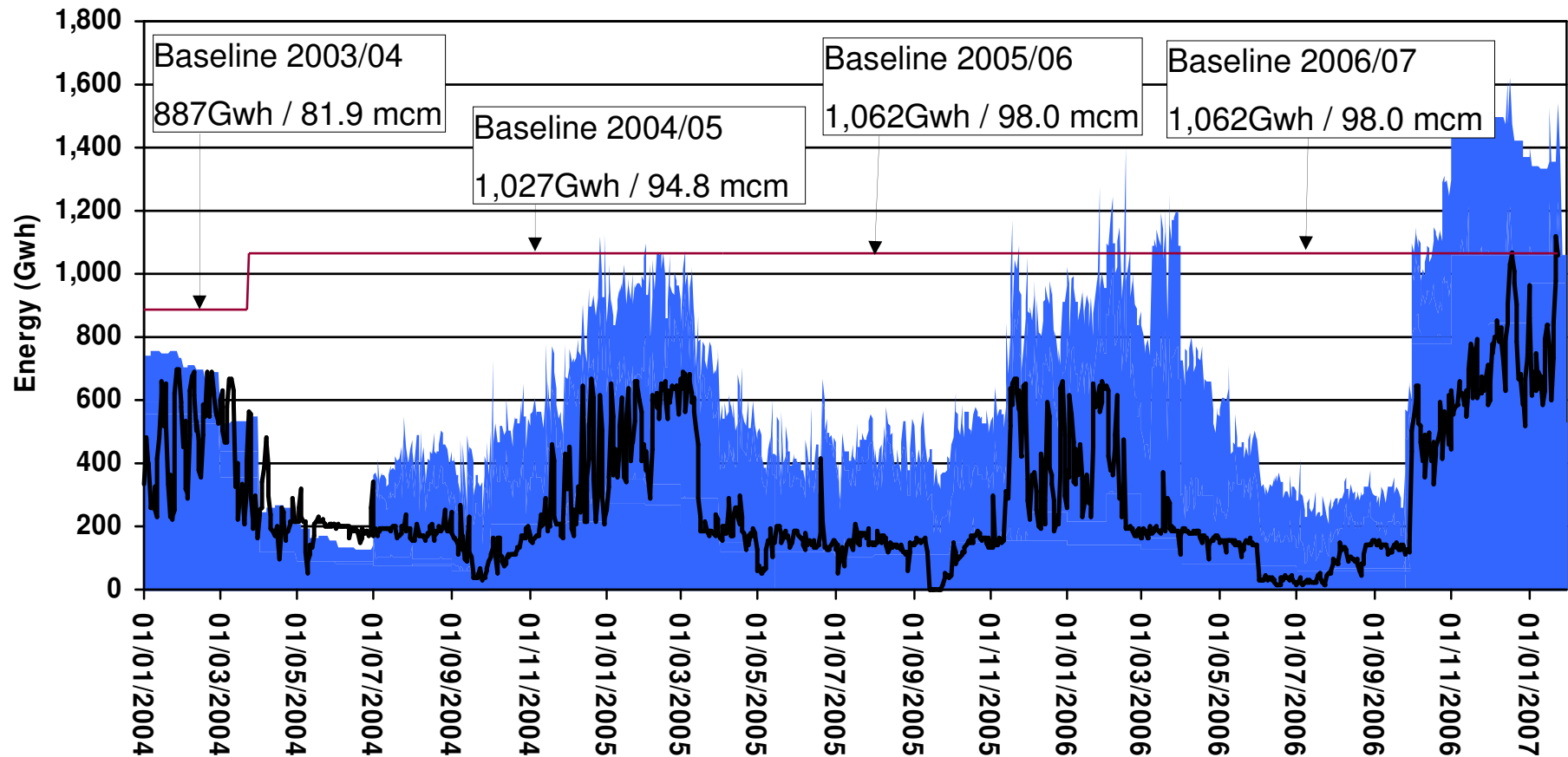
# Easington Terminal



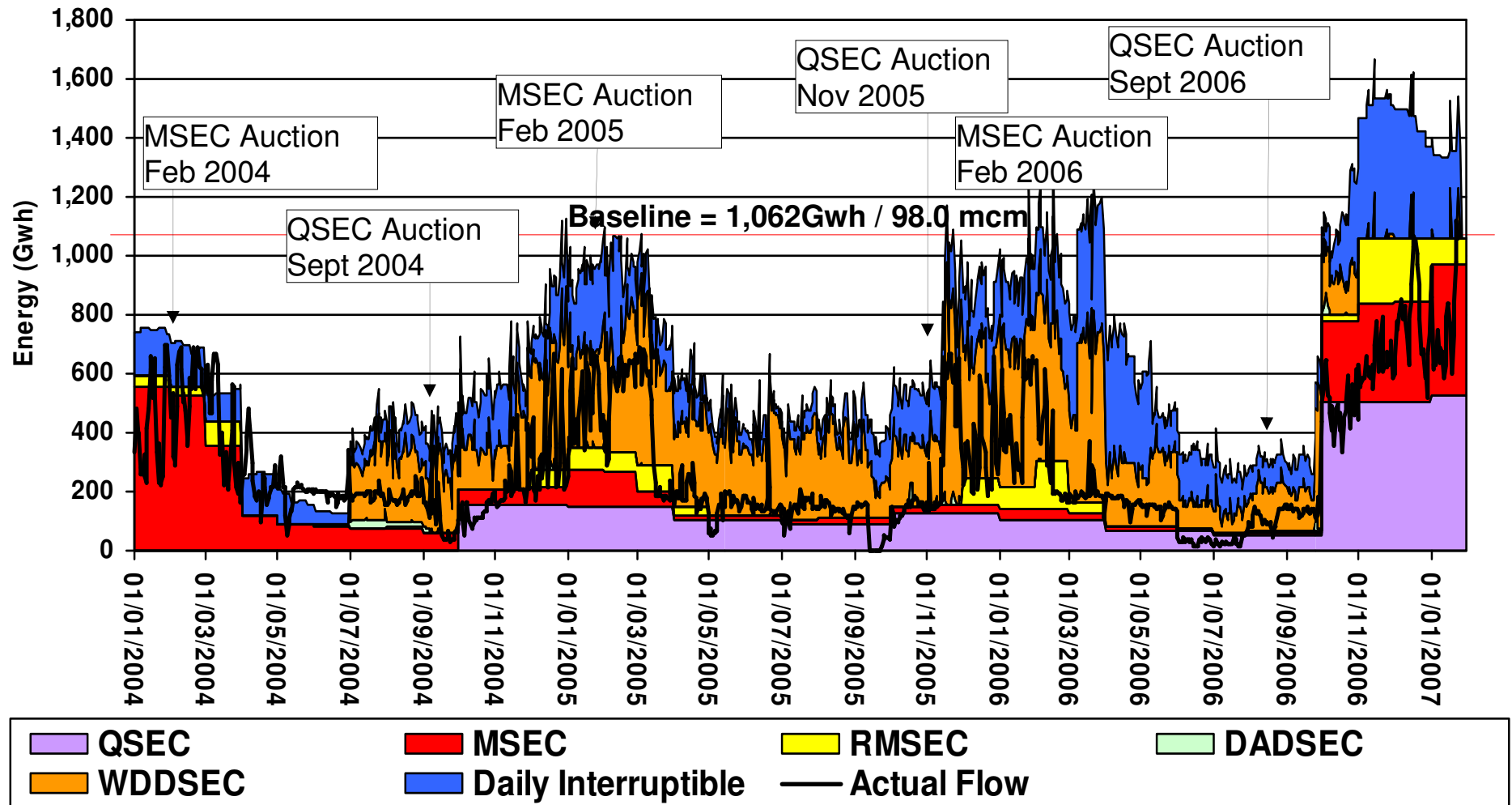
# Easington – Capacity Sold Vs Actual Flows (01/01/04 to present day)



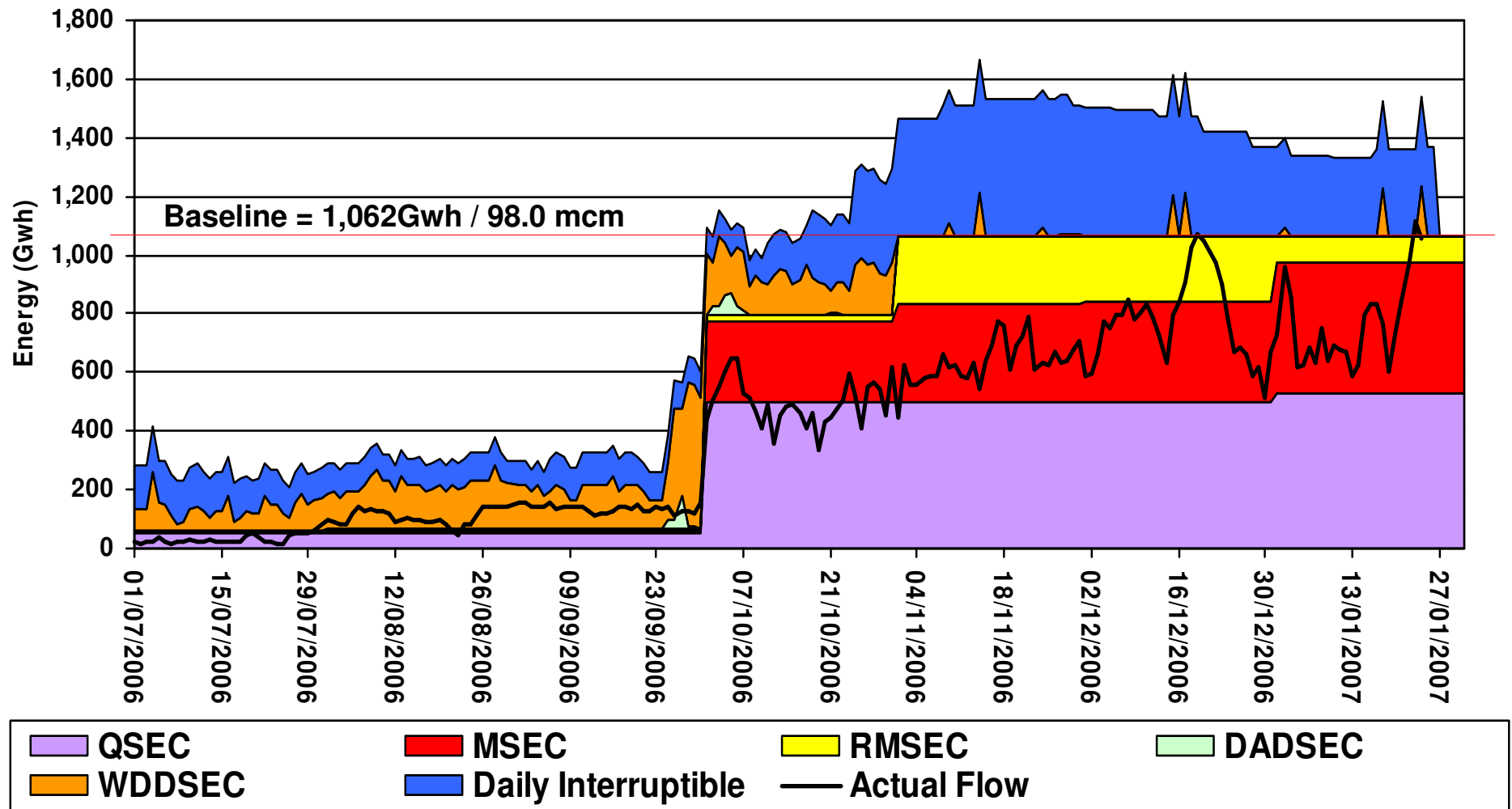
# Easington – Total Capacity Sold Vs Actual Flows (01/01/04 to present day)



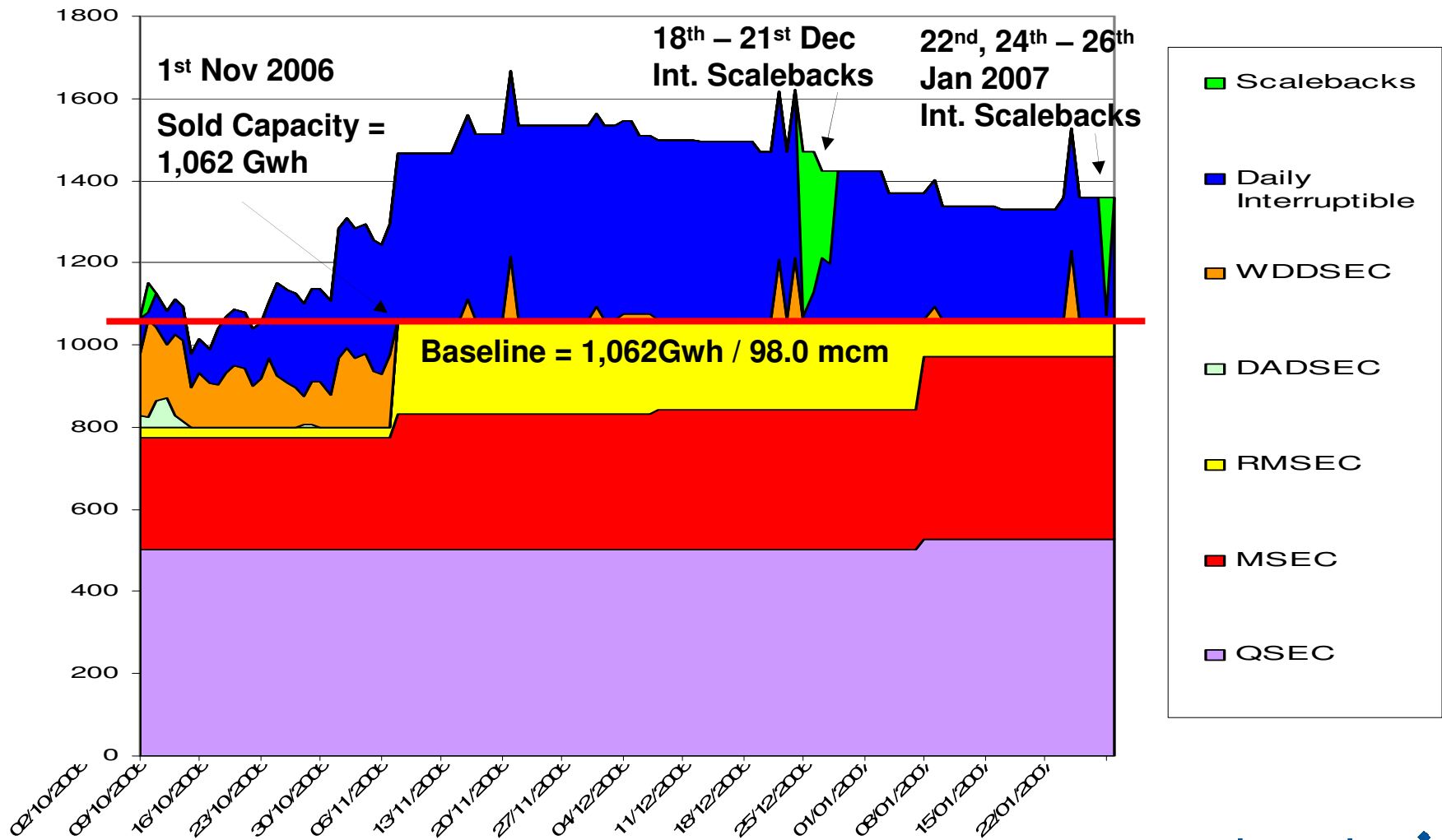
# Easington – Capacity Sold Vs Actual Flows (01/01/04 to present day)



# Easington – Capacity Sold Vs Actual Flows (01/07/06 – present day)



# Easington – Capacity Sold inc. Scalebacks



# Gas Day 18/12/2006 Control Room Actions

---

- ◆ D-1
  - ◆ DFNs > Capability
  - ◆ Scaleback Interruptible Capacity (06:00)
- ◆ D0
  - ◆ Interruptible Capacity already scaled back

# Gas Day 19/12/2006 Control Room Actions

---

- ◆ D-1
  - ◆ DFNs < Capability
  - ◆ No scaleback required
- ◆ D0 (08:30)
  - ◆ DFNs > Capability
  - ◆ Instantaneous Flow > Capability
  - ◆ Scaleback Interruptible Capacity (10:00)

# Gas Day 20/12/2006 Control Room Actions

---

- ◆ D-1
  - ◆ DFNs < Capability
  - ◆ No scaleback required
- ◆ D0 (15:00)
  - ◆ High Pressure
  - ◆ Instantaneous Flow = Capability
  - ◆ Scaleback Interruptible Capacity (16:00)

# Gas Day 21/12/2006 Control Room Actions

---

- ◆ D-1
  - ◆ DFNs < Capability
  - ◆ No scaleback required
- ◆ D0 (13:19)
  - ◆ High Pressure
  - ◆ Instantaneous Flow = Capability
  - ◆ Scaleback Interruptible Capacity (15:00)

# Gas Day 22/01/2007 Control Room Actions

---

- ◆ D-1
  - ◆ DFNs > Capability
  - ◆ Scaleback Interruptible Capacity (06:00)
- ◆ D0
  - ◆ Interruptible Capacity already scaled back

# Gas Day 24/01/2007 Control Room Actions

---

- ◆ D-1
  - ◆ DFNs < Capability
  - ◆ No scaleback required
- ◆ D0 (07:55)
  - ◆ DFNs > Capability
  - ◆ Instantaneous Flow > Capability
  - ◆ Scaleback Interruptible Capacity (09:00)

# Gas Day 25/01/2007 Control Room Actions

---

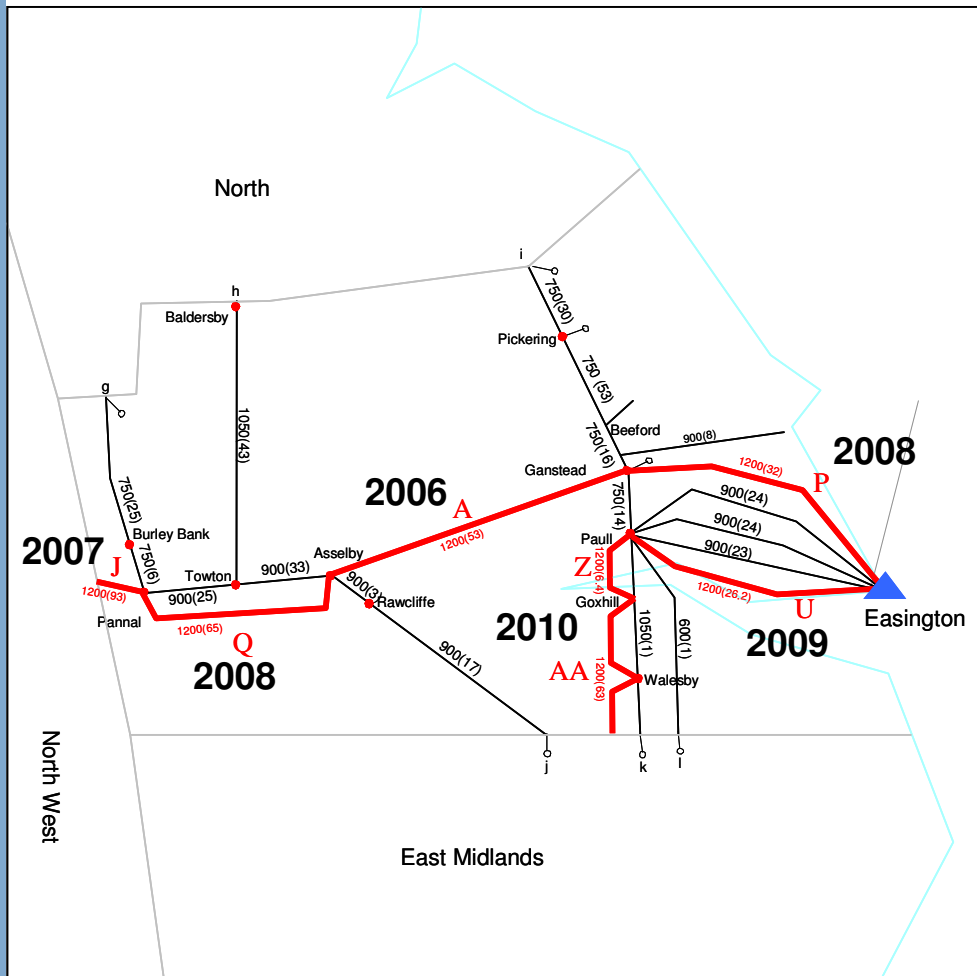
- ◆ D-1
  - ◆ DFNs < Capability
  - ◆ No scaleback required
- ◆ D0
  - ◆ DFNs > Capability (06:12)
  - ◆ Scaleback Interruptible Capacity (08:00)
  - ◆ Pressure high TFA (10%) issued (07:21)
  - ◆ TFA revised to 1% (09:28)
  - ◆ TFA lifted (21:00)

# Gas Day 26/01/2007 Control Room Actions

---

- ◆ D-1
  - ◆ DFNs expected above Capability
  - ◆ Scaleback Interruptible Capacity (06:00)
- ◆ D0
  - ◆ Interruptible Capacity already scaled back

# Easington; future developments



	Scheme	Year
A	Ganstead to Asselby Pipeline	2006
J	Pannal to Nether Kellet Pipeline	2007
P	Easington to Ganstead Pipeline	2008
Q	Asselby to Pannal Pipeline	2008
U	Easington to Paull	2009
Z	Paull to Hatton	2010
AA	Goxhill to Hatton	2010

Source: Ten Year Statement 2006

# Long Term Investment Auction Investment Signals

	Scheme	Year
A	Ganstead to Asselby Pipeline	2006
J	Pannal to Nether Kellet Pipeline	2007
P	Easington to Ganstead Pipeline	2008
Q	Asselby to Pannal Pipeline	2008
U	Easington to Paull	2009
Z	Paull to Hatton	2010
AA	Goxhill to Hatton	2010

Feb 2004

Trans-Pennine Link to meet existing Baseline Capacity

Nov 2005 LTSEC Auctions  
Maintain Baseline Capacity

Sep 2006 LTSEC Auctions  
Exceed Baseline Capacity

# Easington – Capacity Sold Vs Actual Flows

