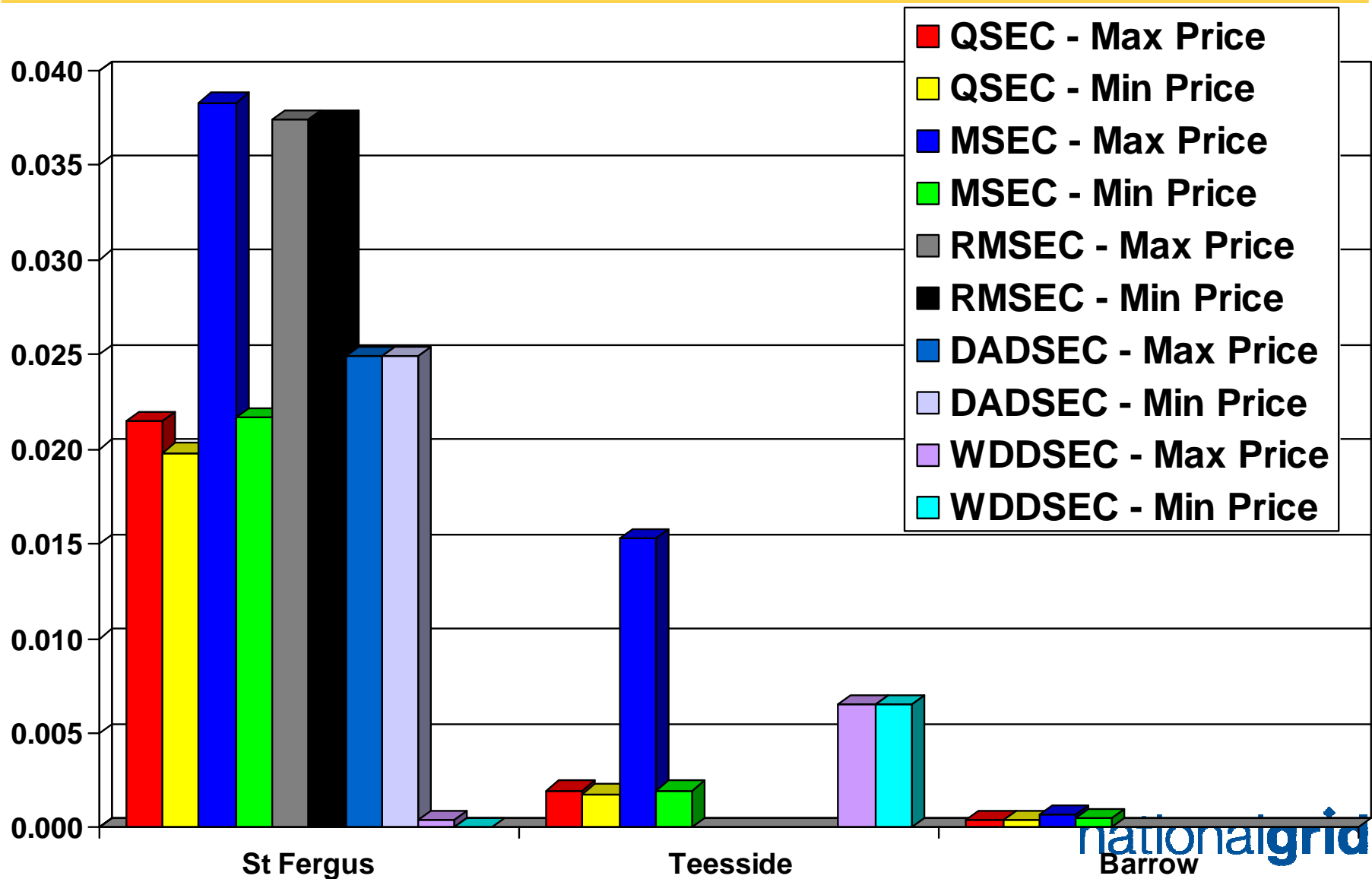


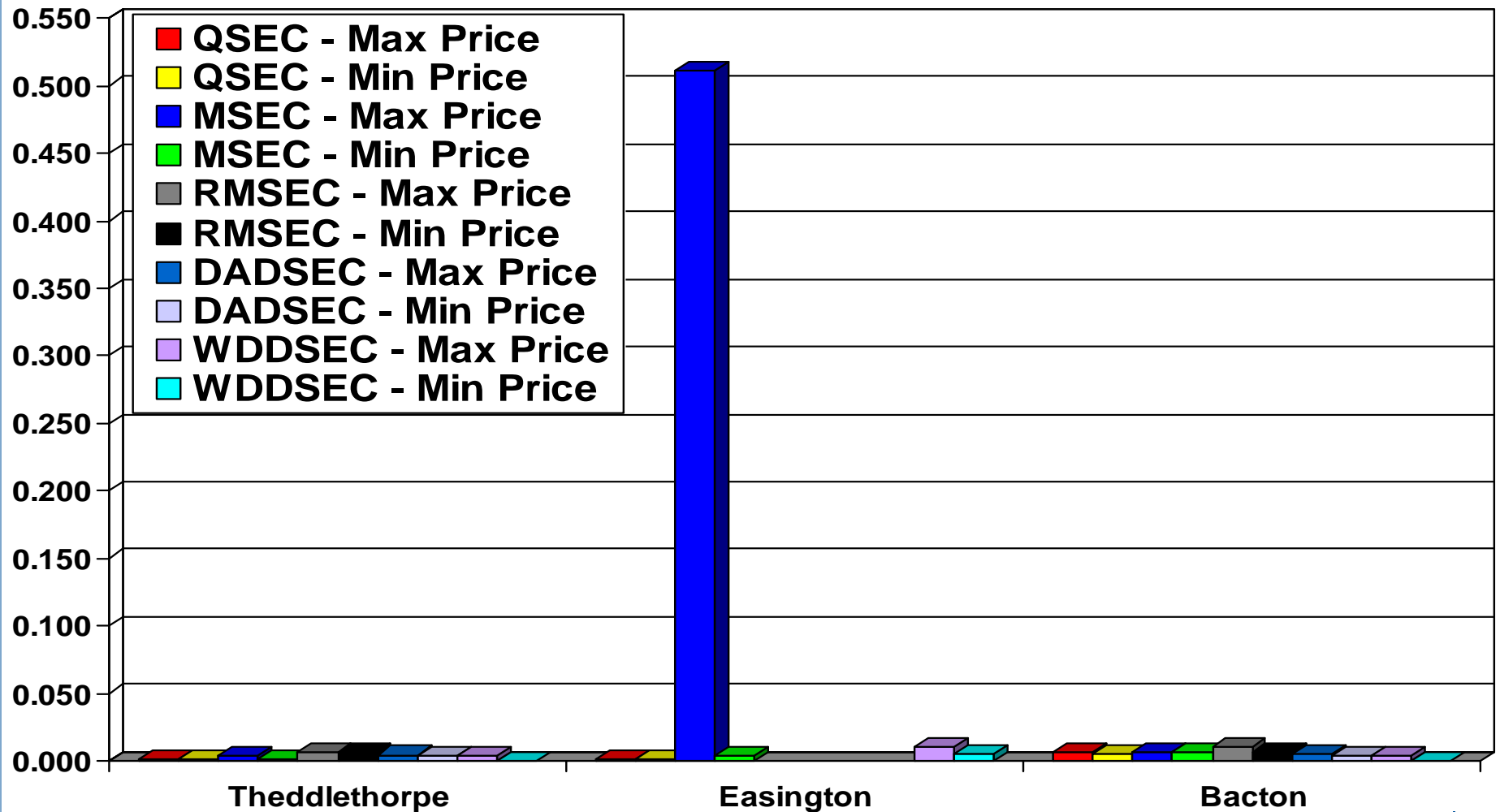
# Performance of the Capacity Regime

---

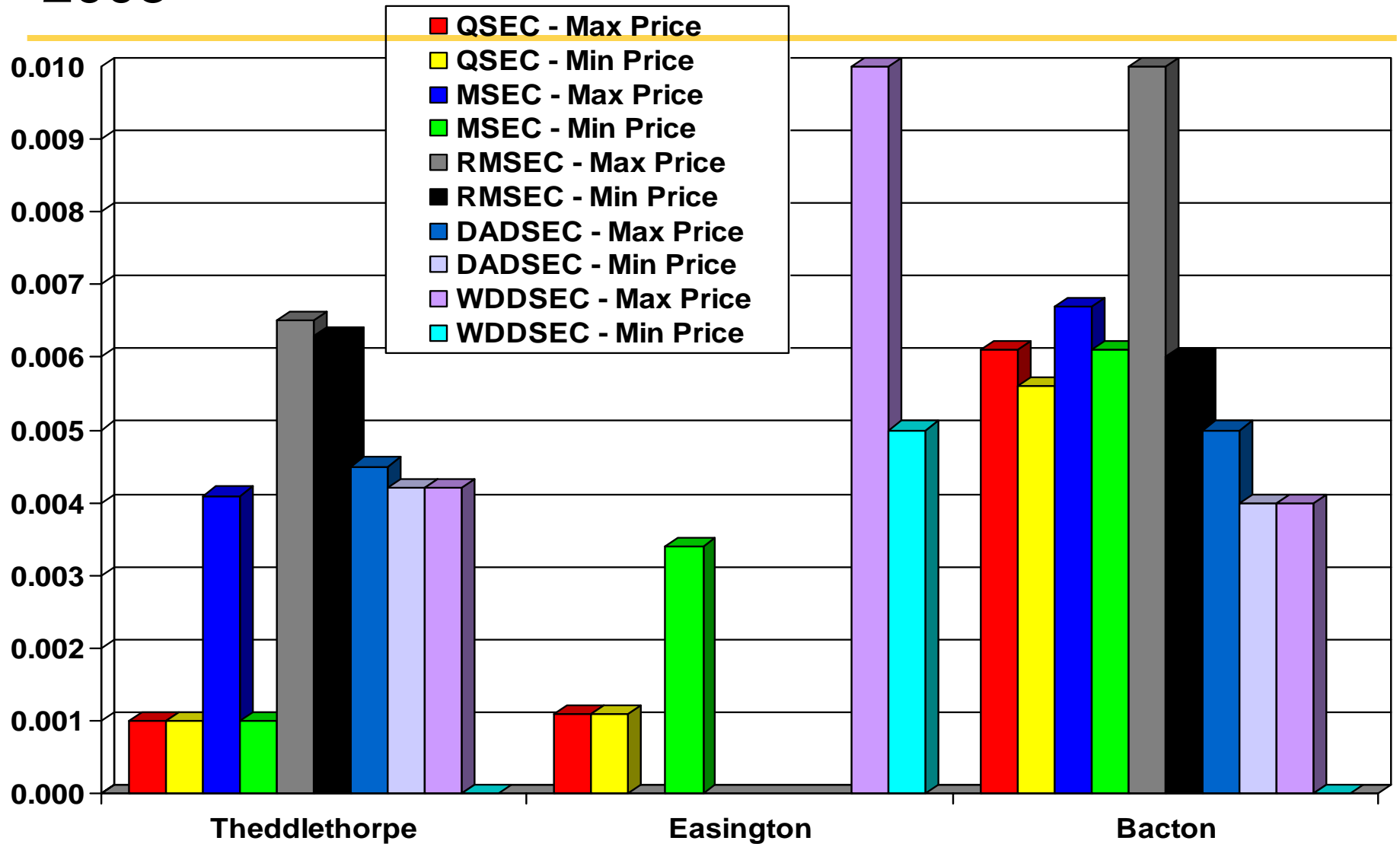
# Capacity Auction Price Comparison for January 2008



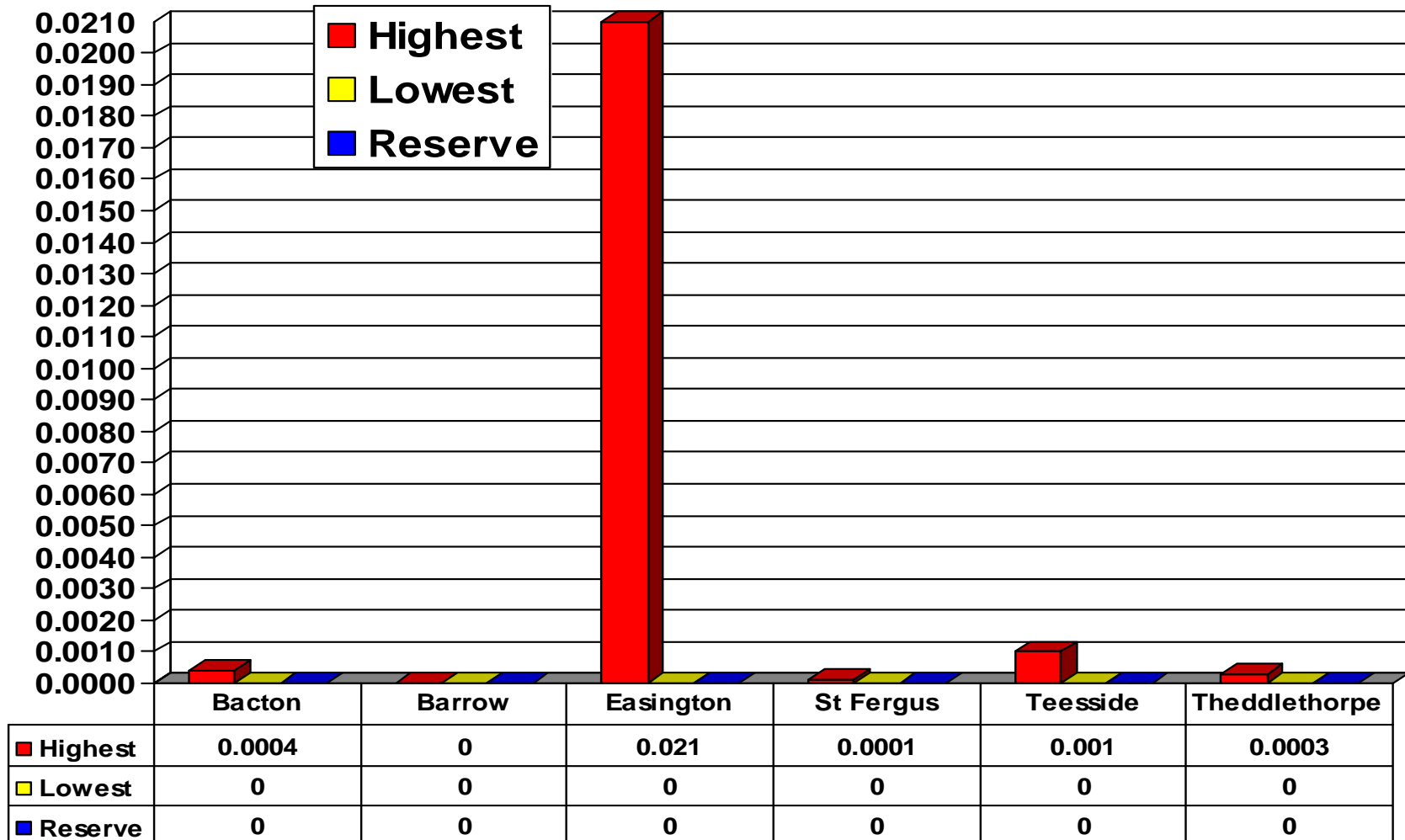
# Capacity Auction Price Comparison for January 2008



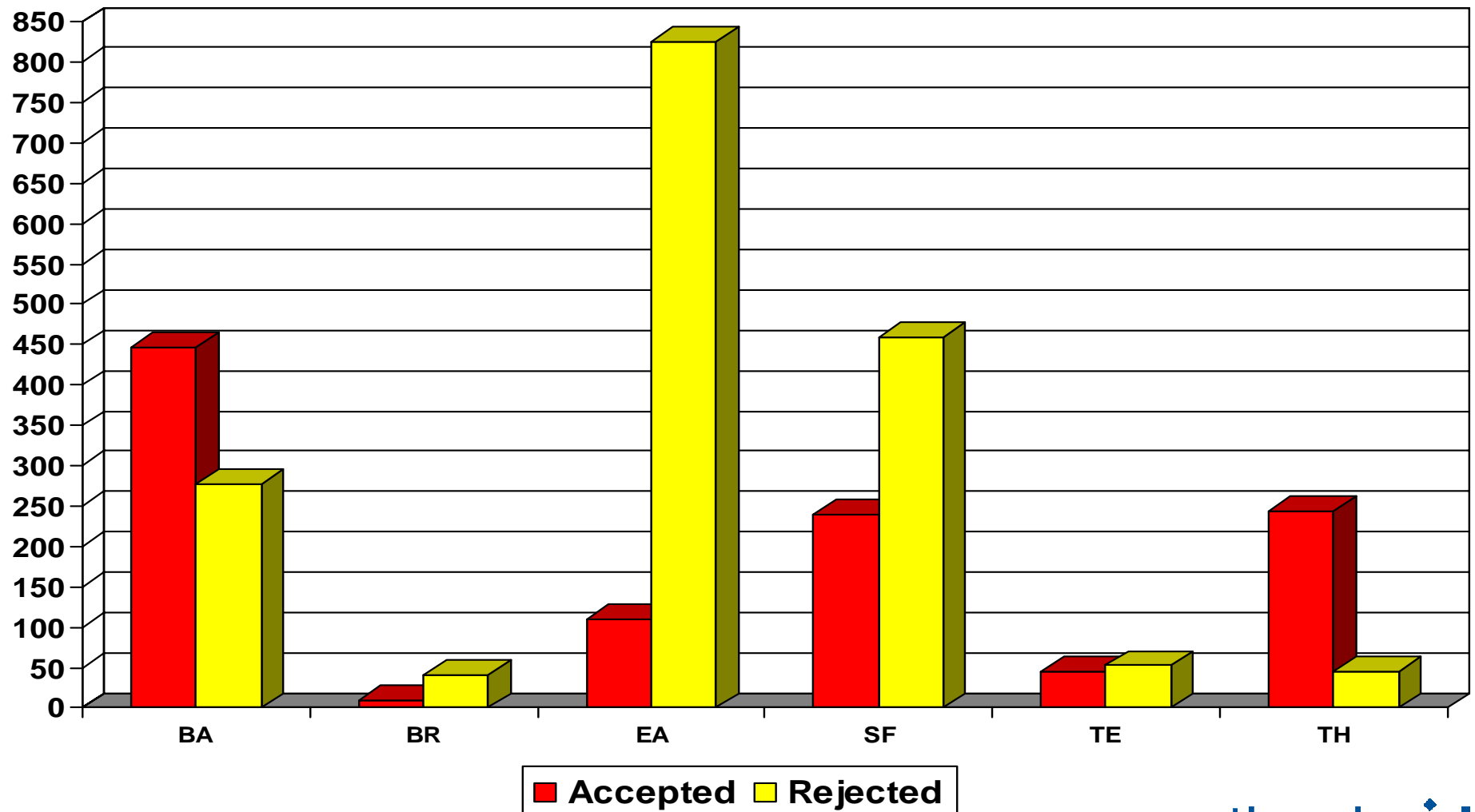
# Capacity Auction Price Comparison for January 2008



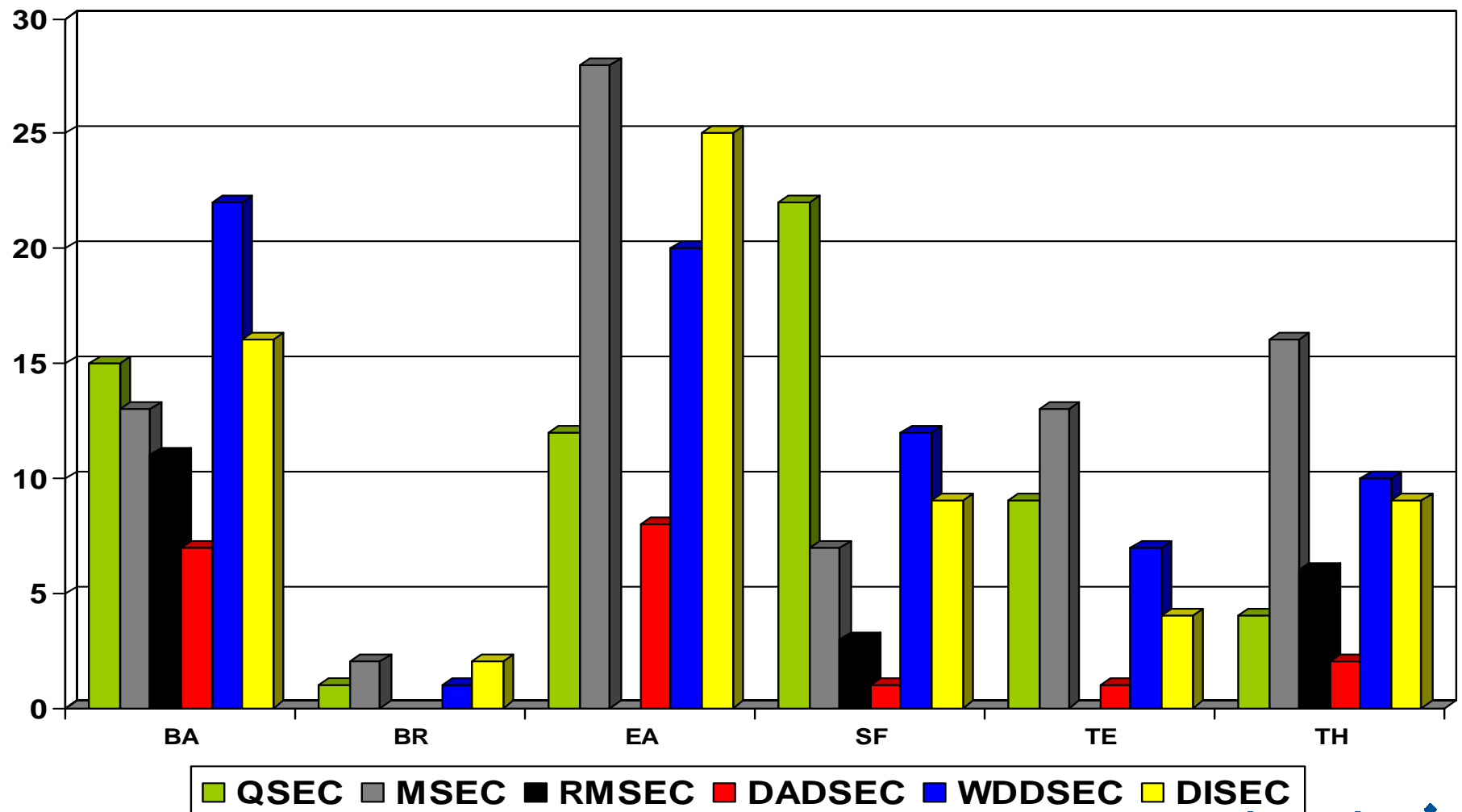
# Daily Interruptible Entry Capacity Prices For January 2008



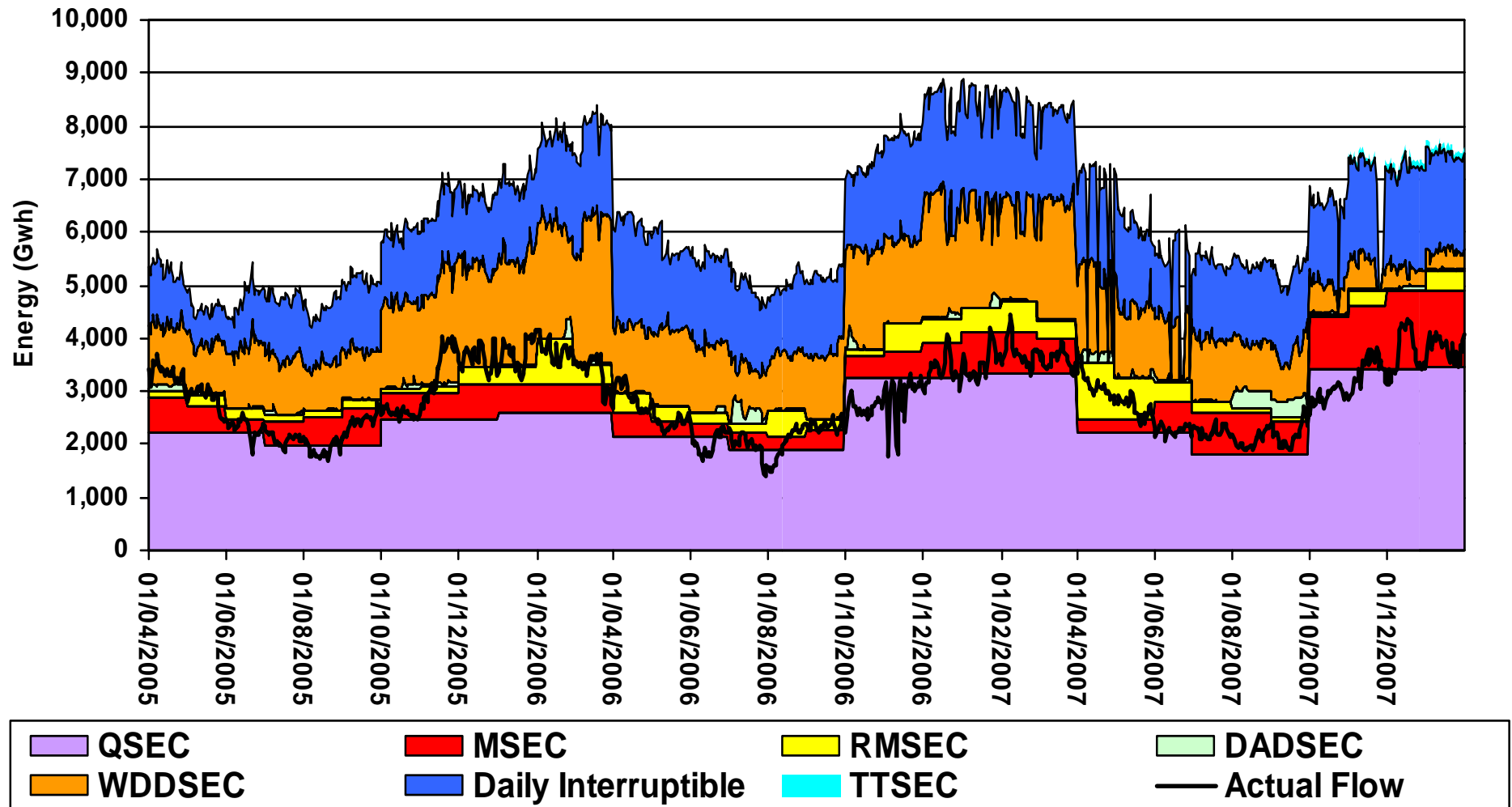
# Accepted/rejected Capacity bids for January 2008



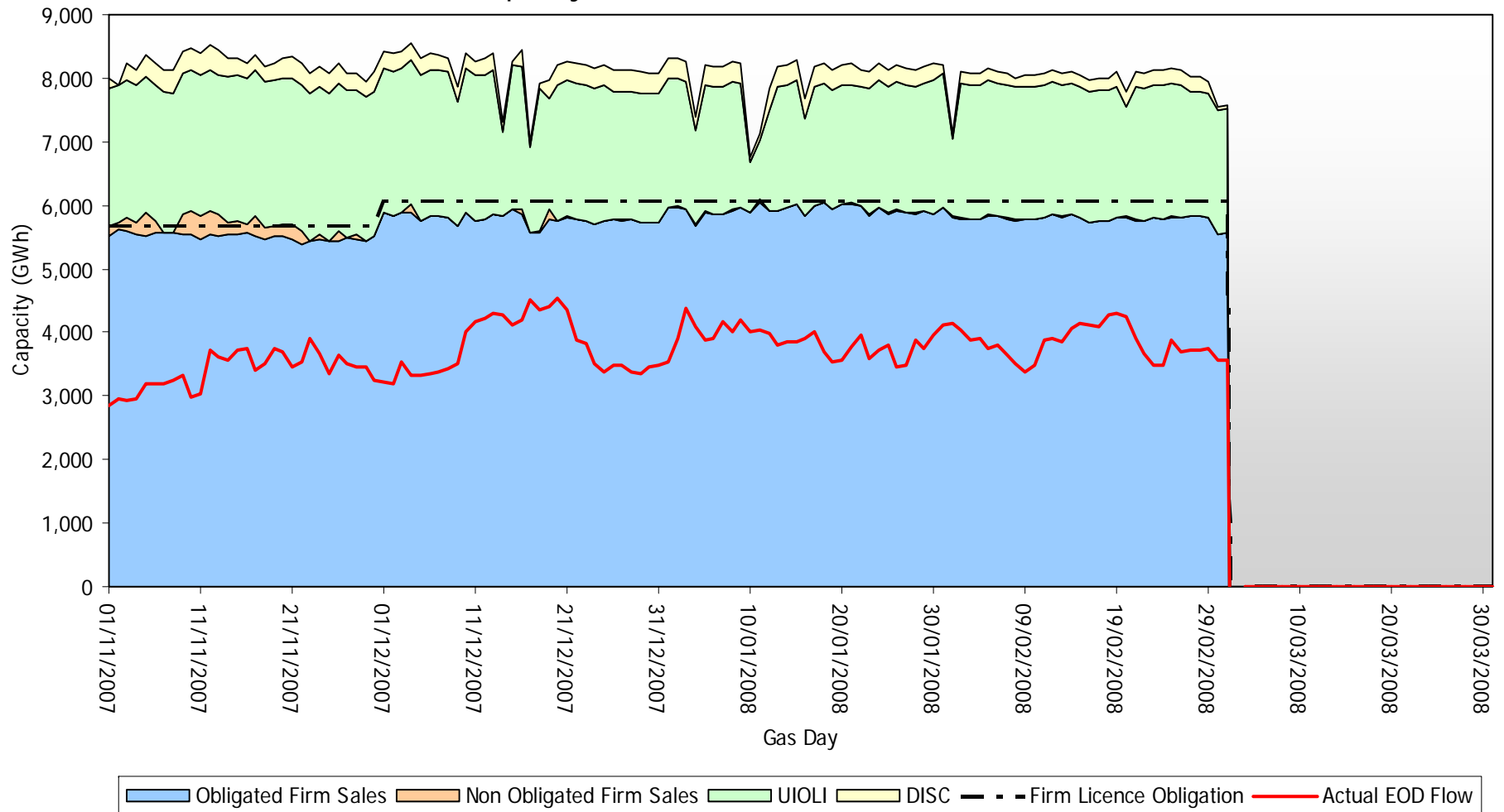
# Capacity Auctions: Number of Shippers Bidding for January 2008



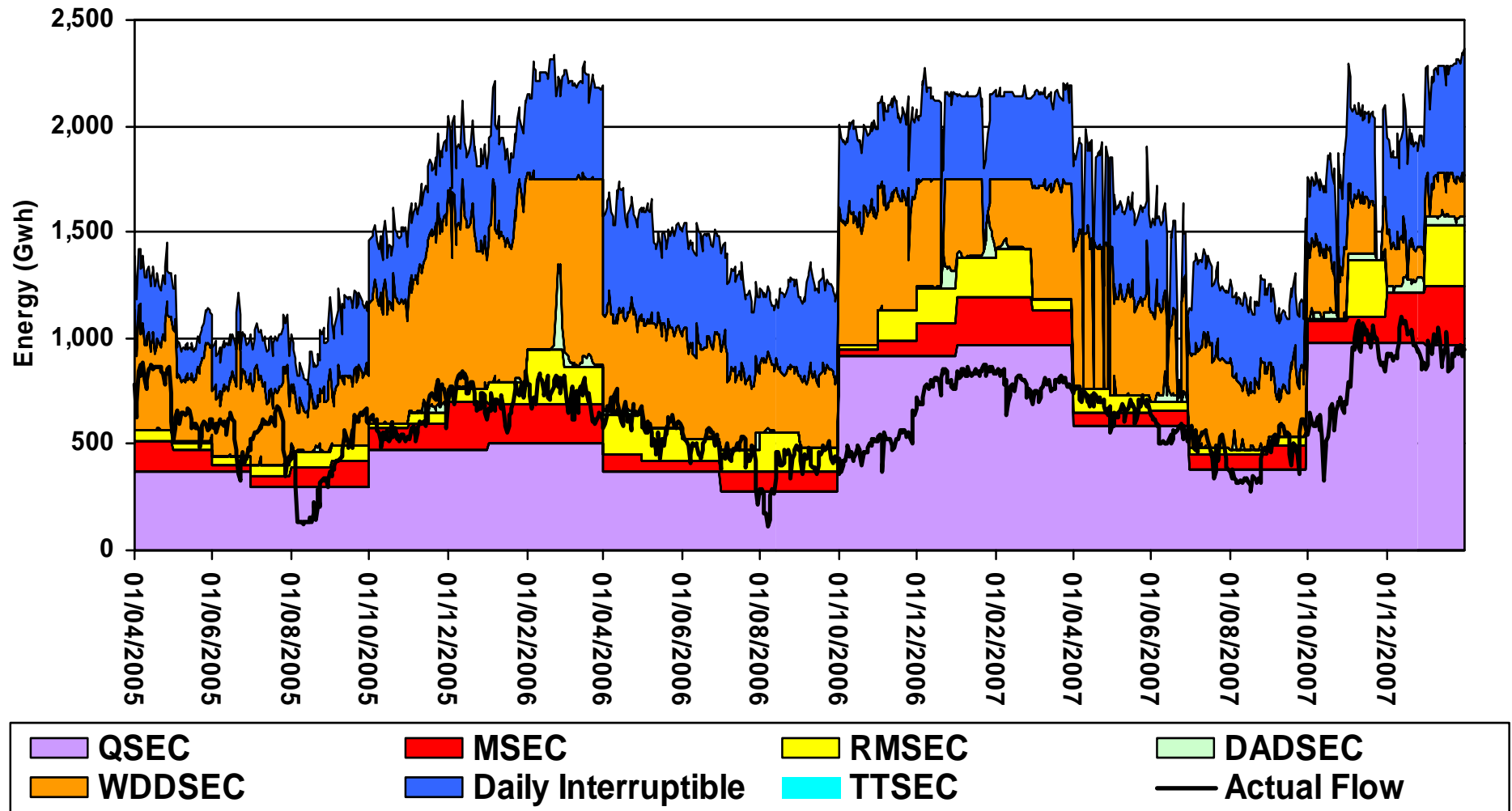
# Capacity Sold Vs Actual Flows (for the 6 Major ASEP's)



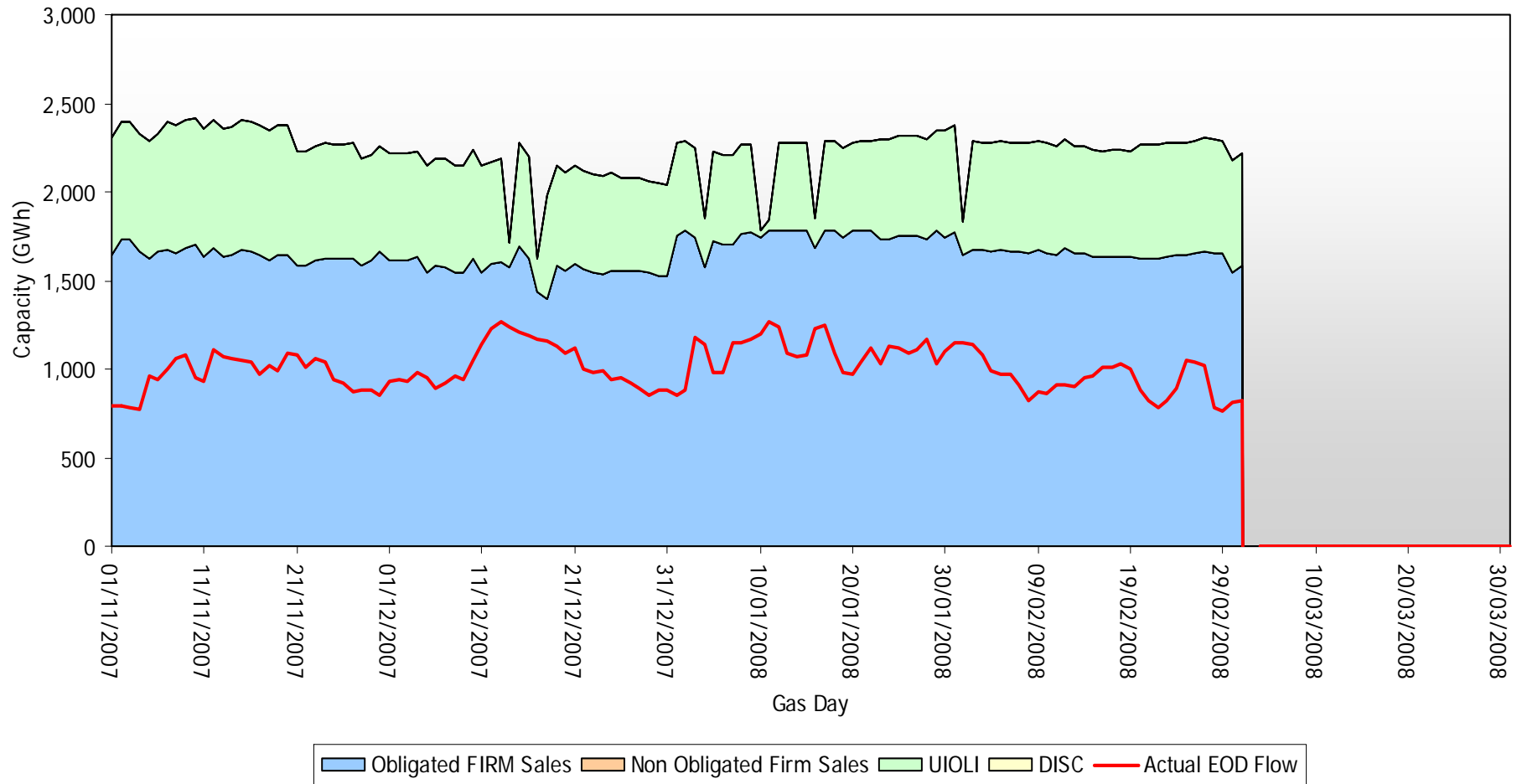
Capacity Sold Vs Actual Flow Winter 07/08



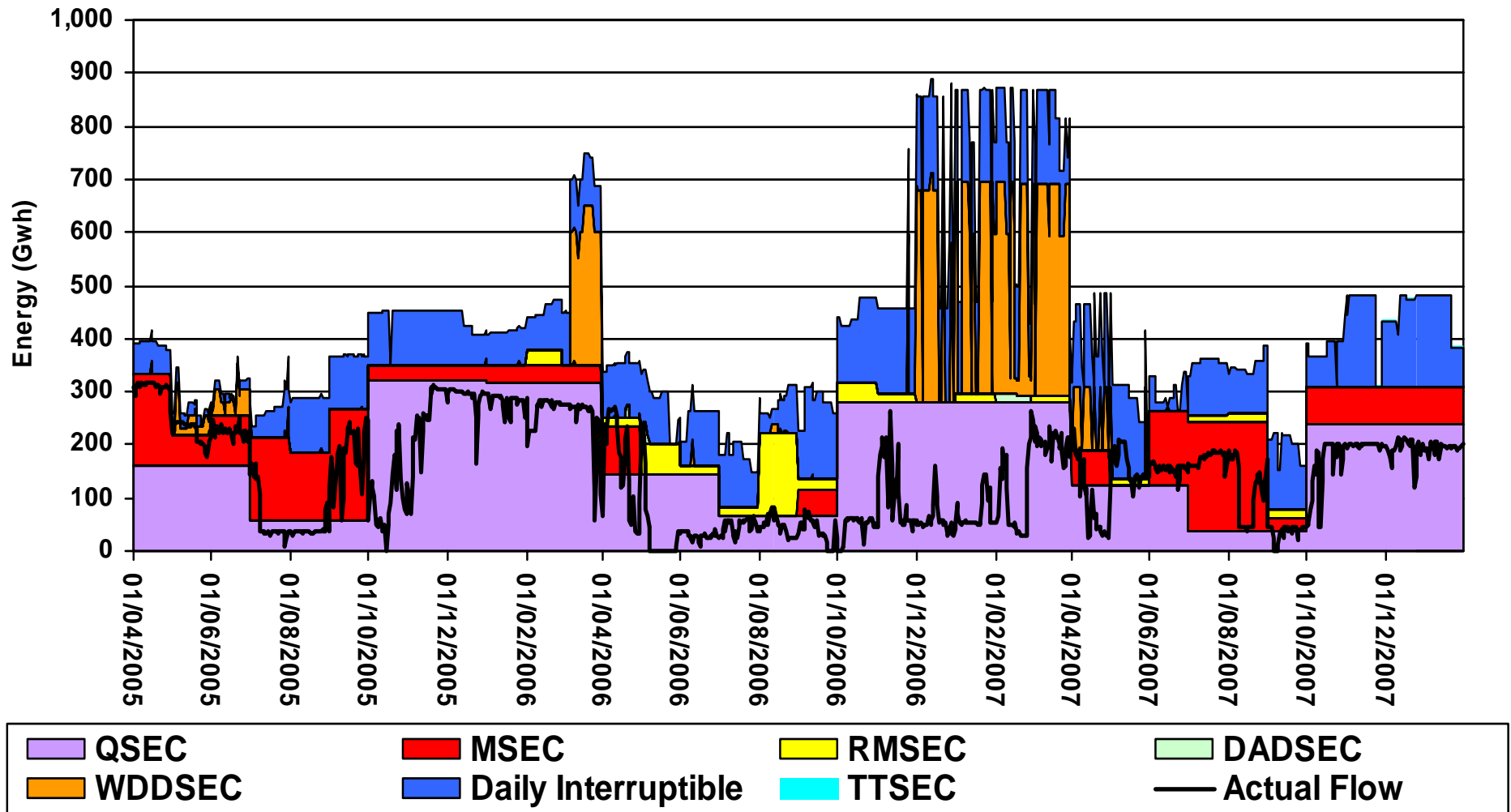
# Bacton – Capacity Sold Vs Actual Flows



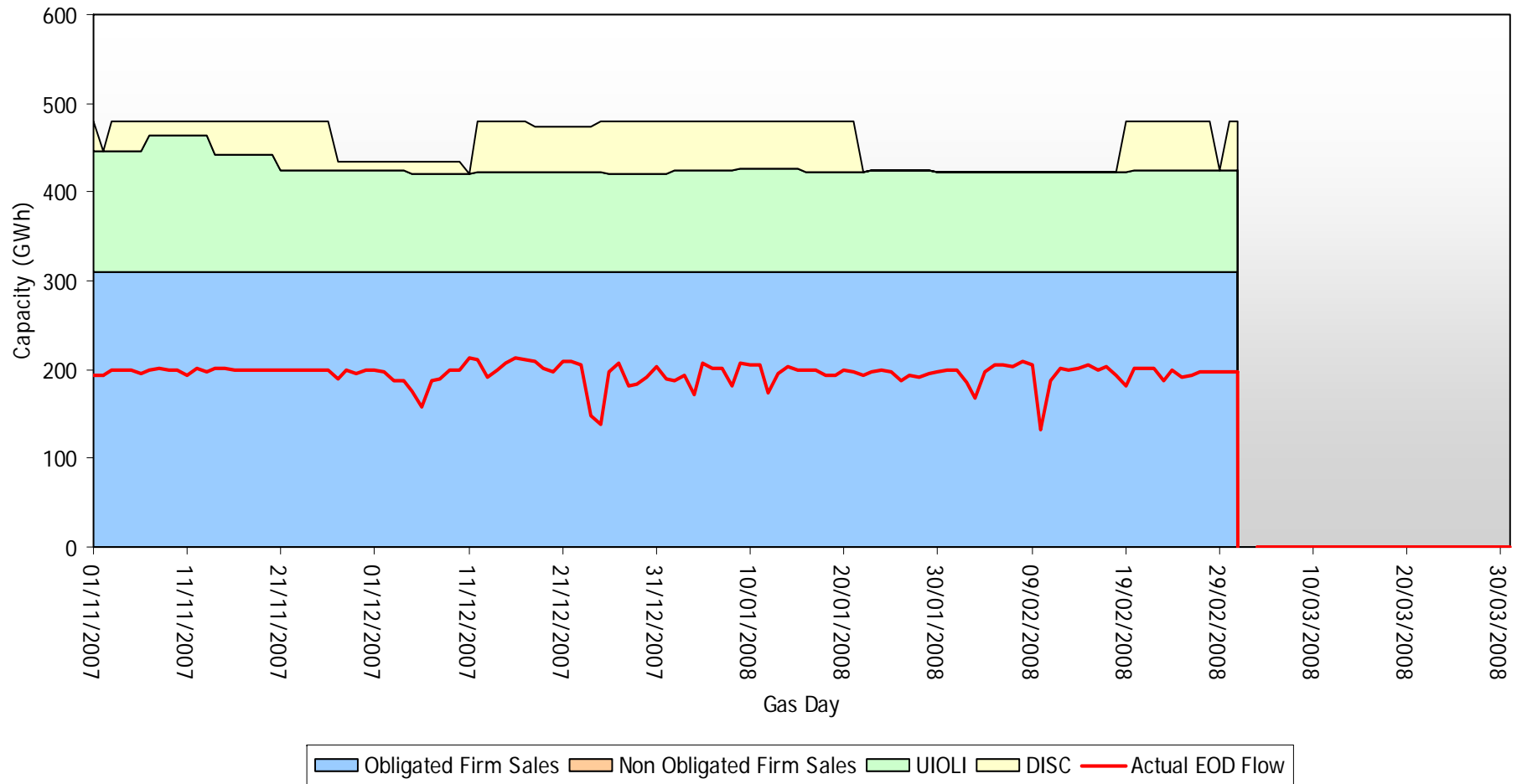
Bacton Capacity Sold Vs Actual Flow Winter 07/08



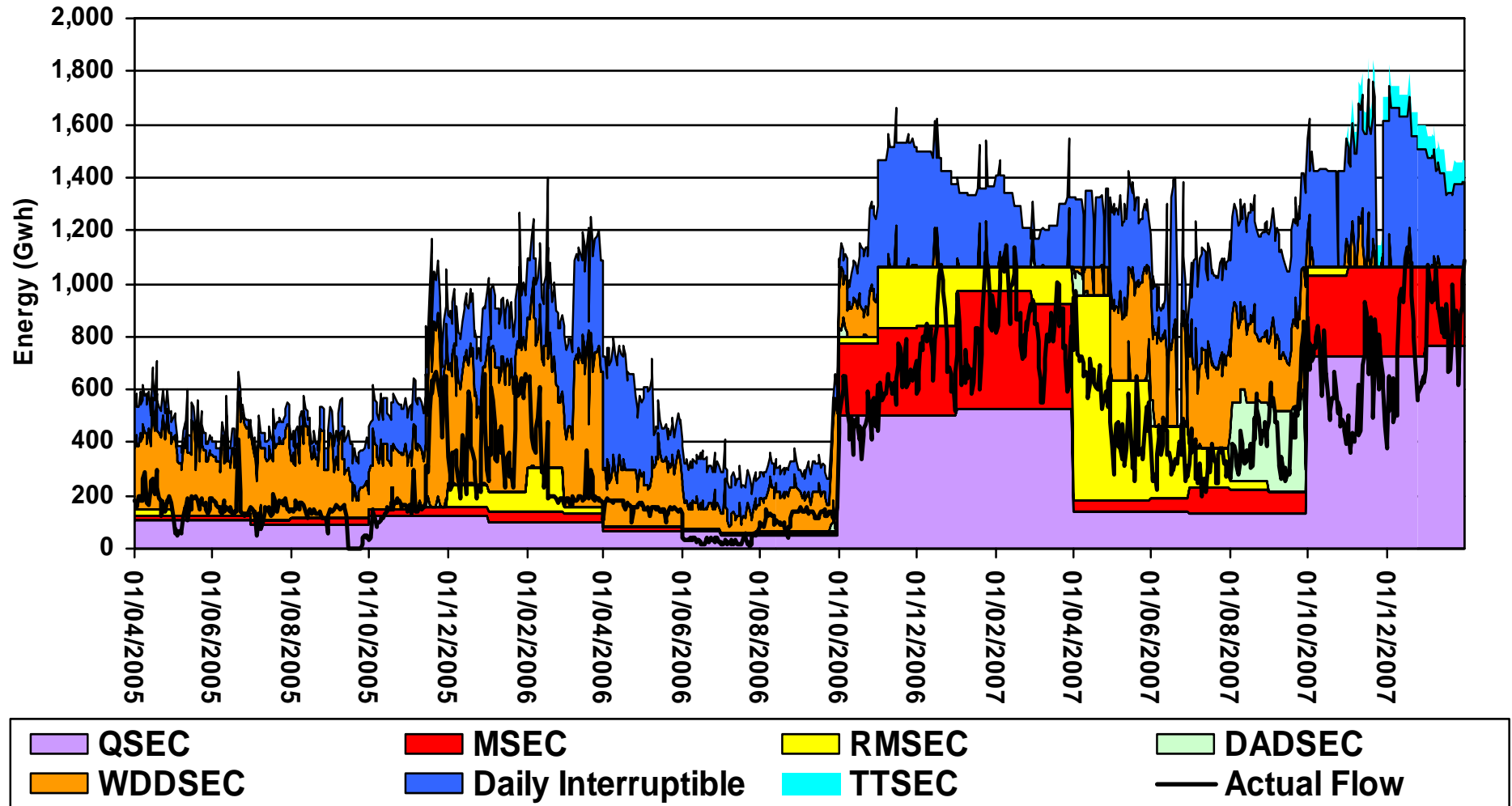
# Barrow – Capacity Sold Vs Actual Flows



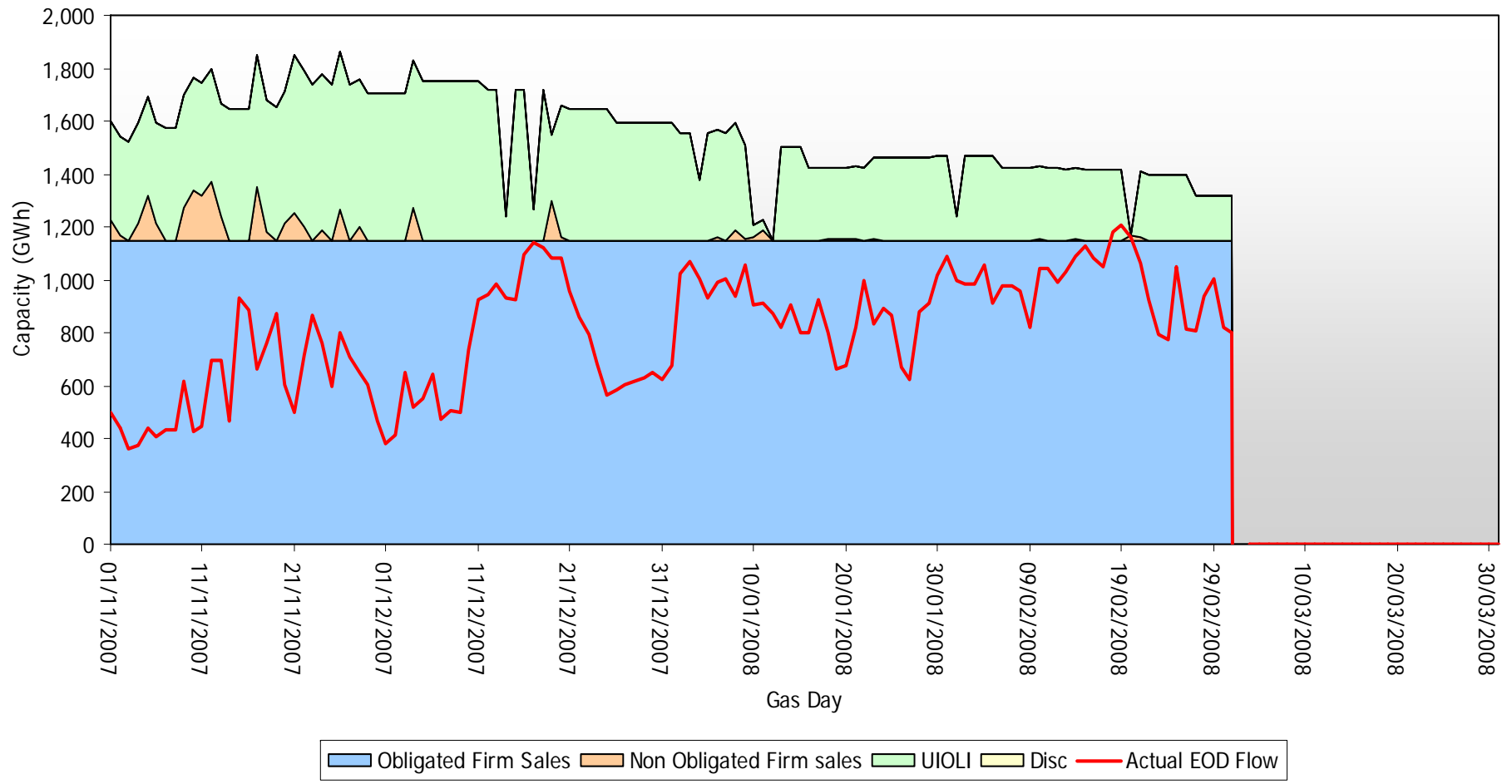
### Barrow Capacity Sold Vs Actual Flow Winter 07/08



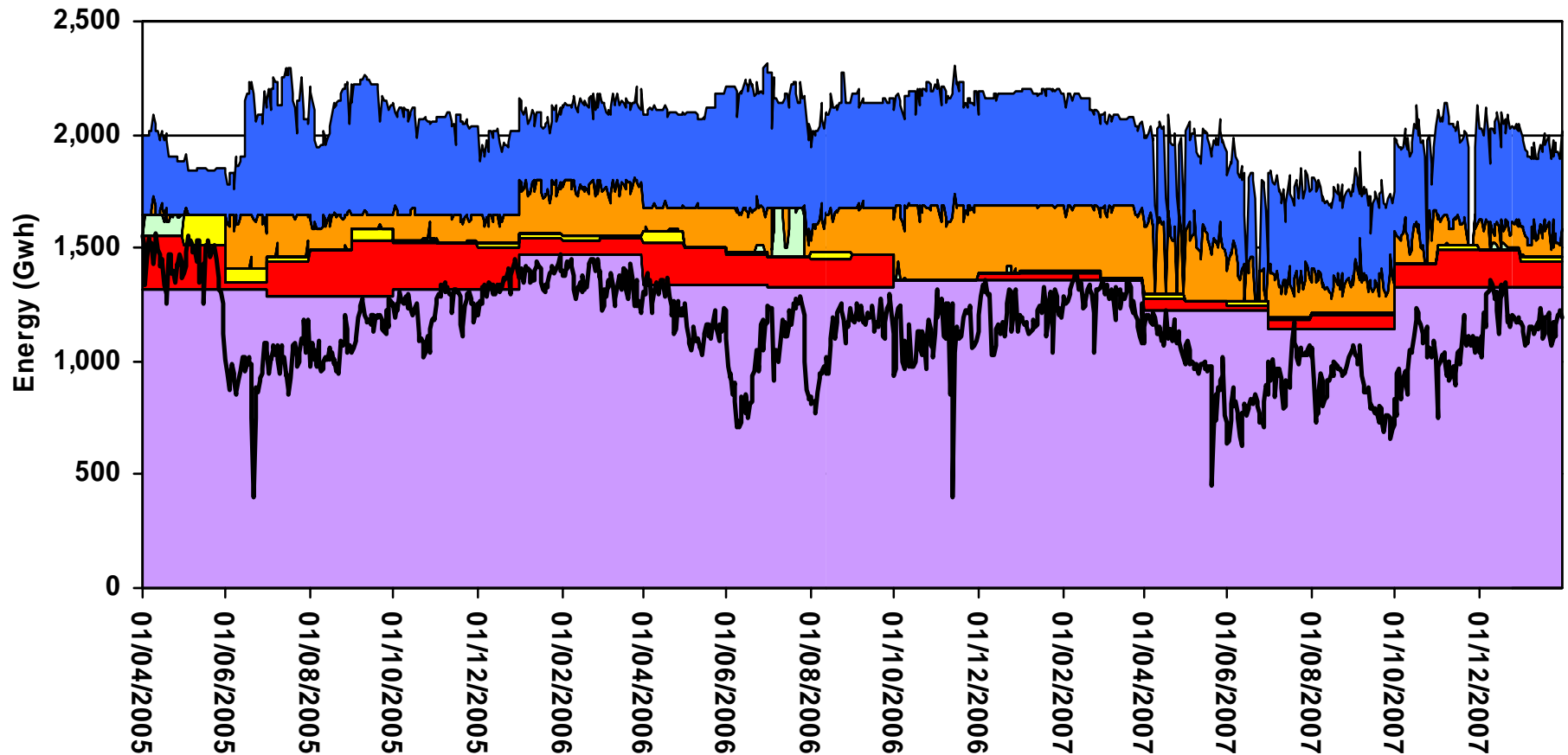
# Easington – Capacity Sold Vs Actual Flows



Easington Capacity Sold Vs Actual Flow Winter 07/08

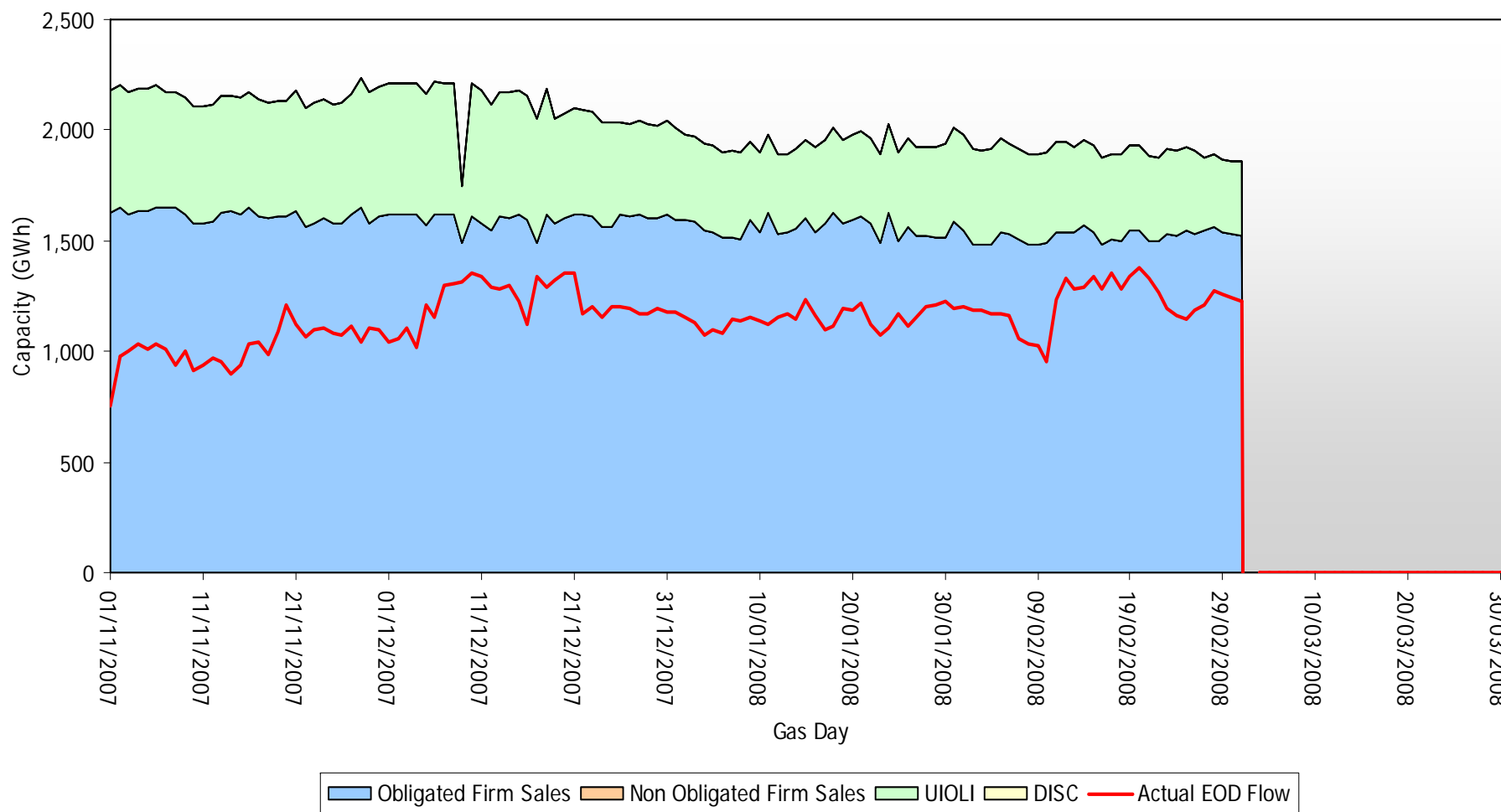


# St Fergus – Capacity Sold Vs Actual Flows

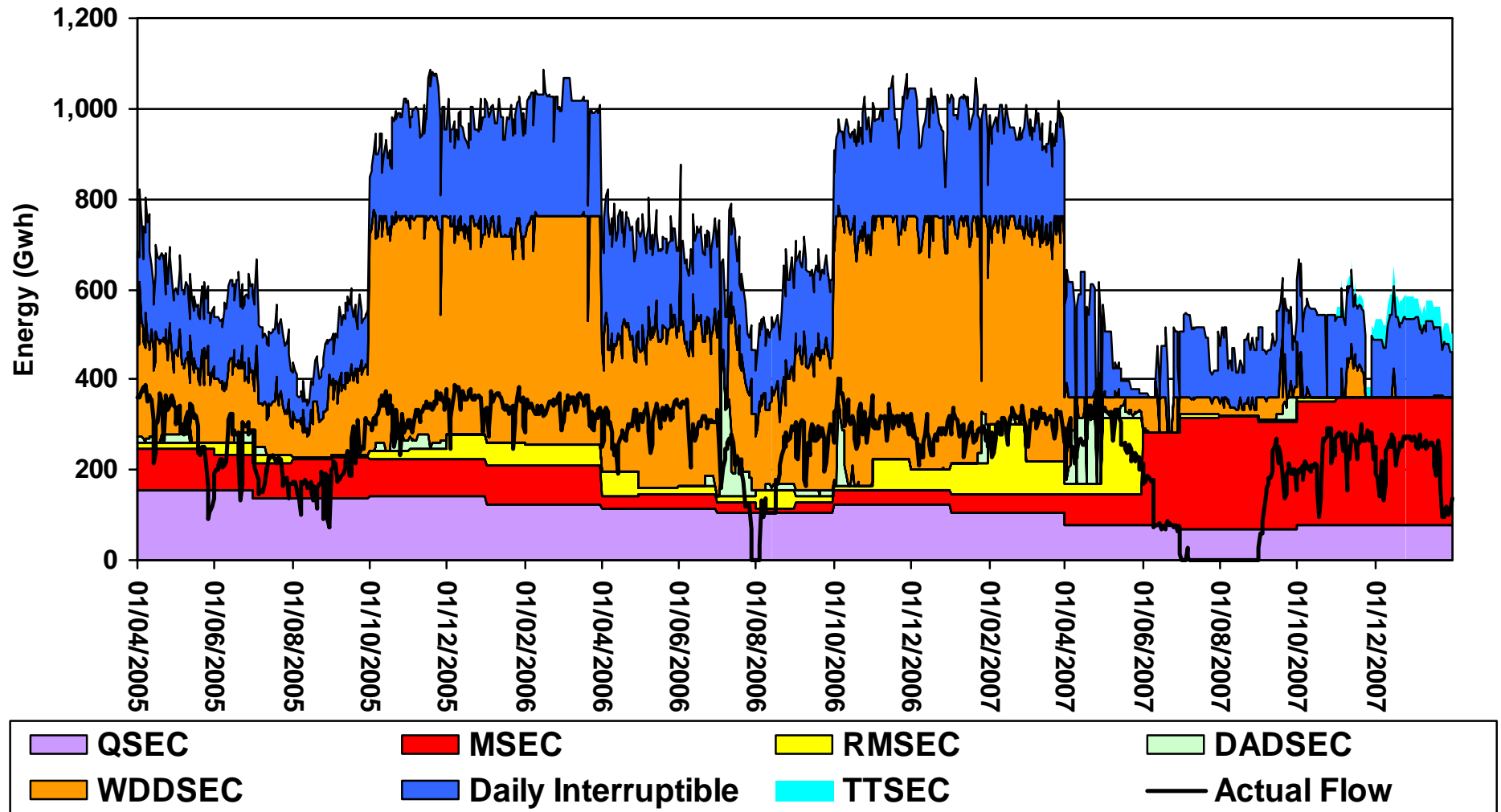


QSEC MSEC RMSEC DADSEC  
WDDSEC Daily Interruptible TTSEC Actual Flow

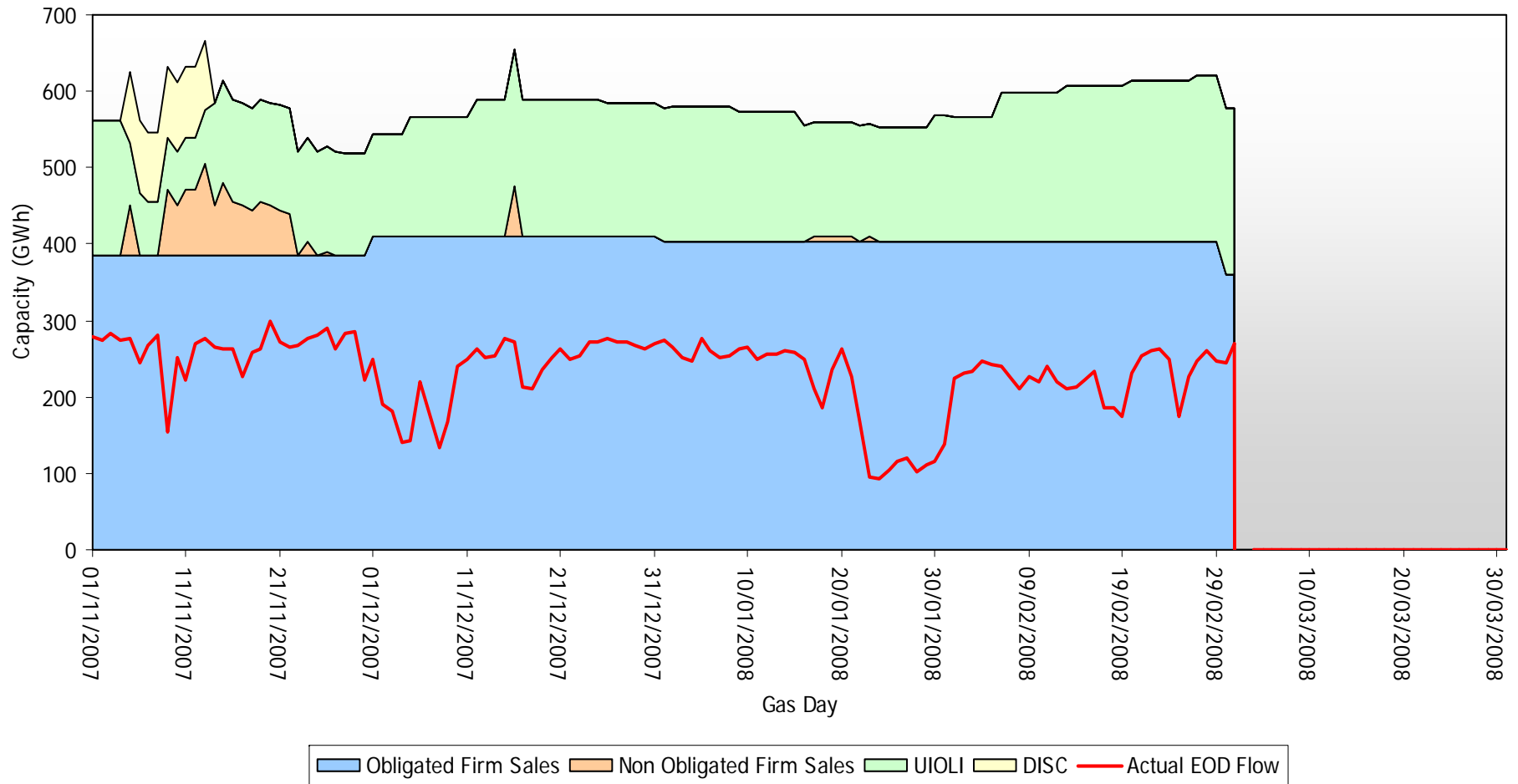
### St Fergus Capacity Sold Vs Actual Flow Winter 07/08



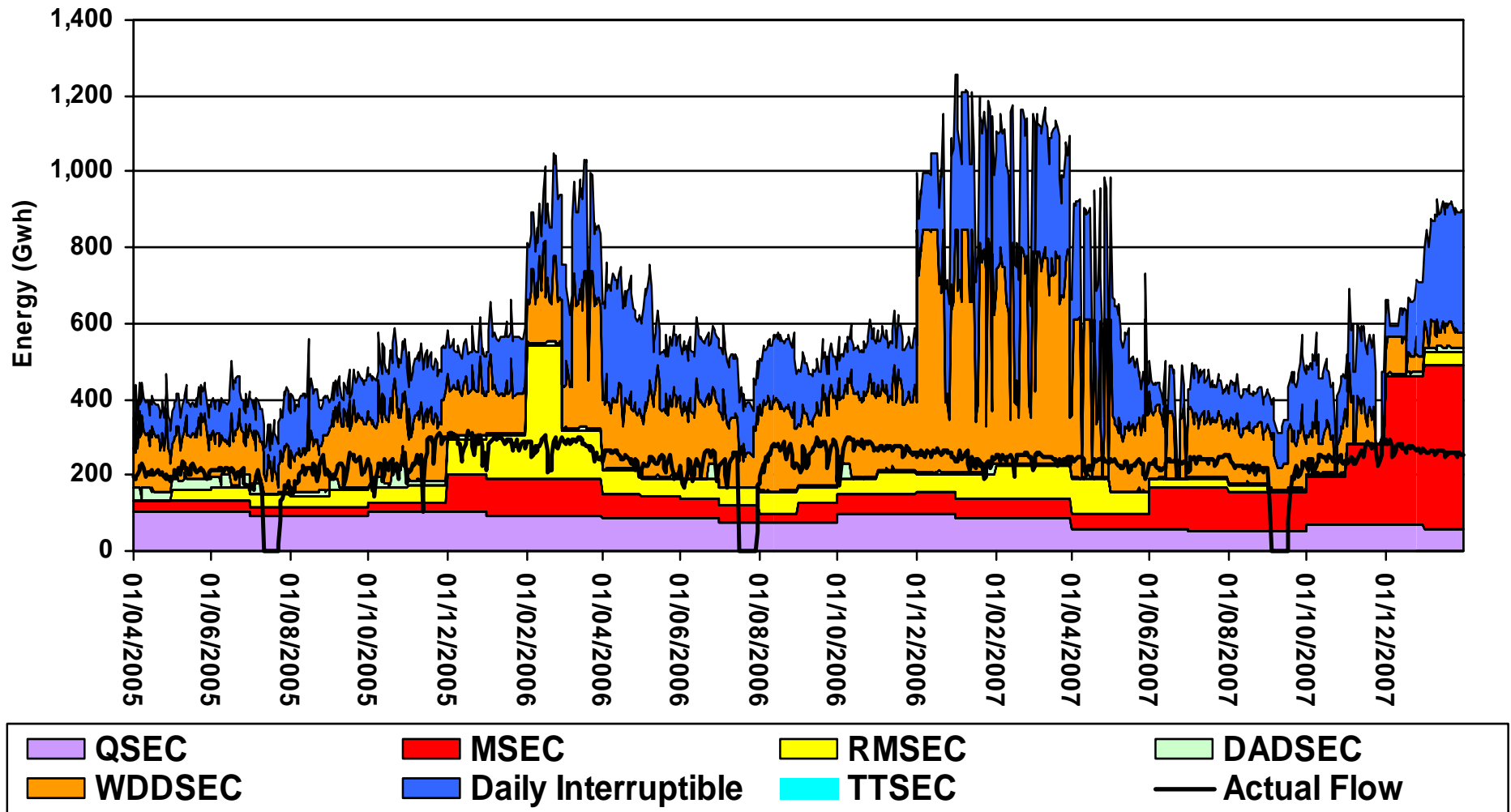
# Teesside – Capacity Sold Vs Actual Flows



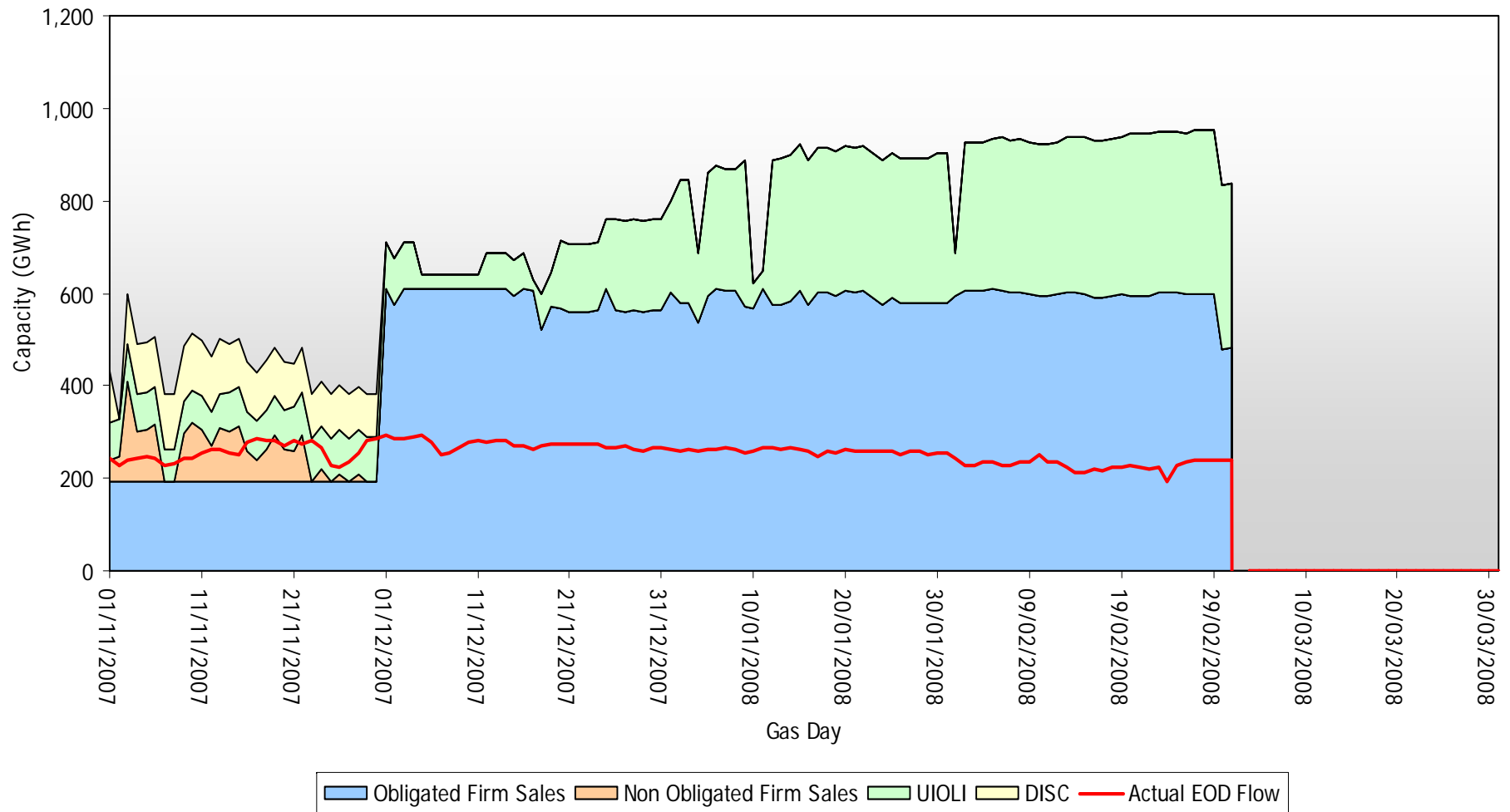
Teesside Capacity Sold Vs Actual Flow Winter 07/08



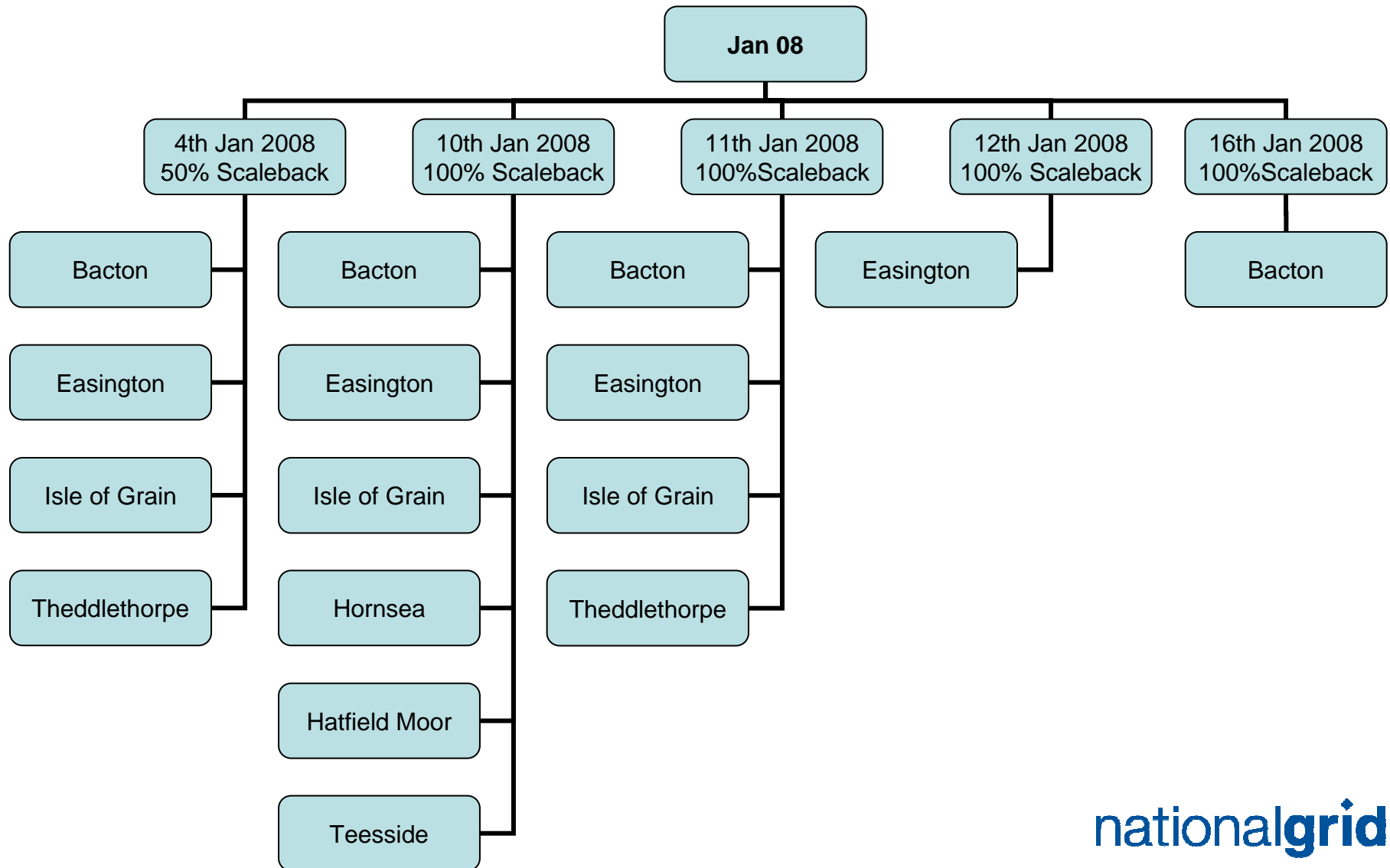
# Theddlethorpe – Capacity Sold Vs Actual Flows



### Theddlethorpe Capacity Sold Vs Actual Flow Winter 07/08



# Capacity Scale Back for January 2008



# Capacity Buy Back Days for January 2008

---

- ◆ There were no capacity buy backs.

# Capacity Neutrality – Revenues From DSEC & DAI : 01/04/07 – 01/01/08

---

| ASEP          | Revenue              |
|---------------|----------------------|
| St Fergus     | £14,640.12           |
| Teesside      | £15,585.90           |
| Barrow        | £18,460.00           |
| Theddlethorpe | £30,360.35           |
| Easington     | £1,475,142.99        |
| Bacton        | £62,962.08           |
| Other         | £11,574.59           |
| <b>TOTAL</b>  | <b>£1,628,726.38</b> |

# Capacity Neutrality – Prompt Buy Backs : 01/04/07 – 01/01/08

---

| ASEP          | Cost      | No.of days | Volume (kWh) |
|---------------|-----------|------------|--------------|
| St Fergus     | £0        | 0          | 0            |
| Teesside      | £0        | 0          | 0            |
| Barrow        | £0        | 0          | 0            |
| Theddlethorpe | £0        | 0          | 0            |
| Easington     | £0        | 0          | 0            |
| Bacton        | £0        | 0          | 0            |
| <b>TOTAL</b>  | <b>£0</b> | <b>0</b>   | <b>0</b>     |

# Capacity Neutrality – Revenues From Overruns

---

| Month          | Revenue            |
|----------------|--------------------|
| April 2007     | £21,125.72         |
| May 2007       | £19,561.77         |
| June 2007      | £9,129.73          |
| July 2007      | £17,366.46         |
| August 2007    | £10,771.38         |
| September 2007 | £97,338.20         |
| October 2007   | £62,743.54         |
| November 2007  | £191,585.26        |
| December 2007  | £101,964.92        |
| January 2008   | £32,159.04         |
| <b>Total</b>   | <b>£563,746.02</b> |

# Capacity Neutrality – Capacity Management Agreement

---

| Month          | Cost                 |
|----------------|----------------------|
| April 2007     | £0.00                |
| May 2007       | £0.00                |
| June 2007      | £0.00                |
| July 2007      | £0.00                |
| August 2007    | £0.00                |
| September 2007 | £0.00                |
| October 2007   | £285,200.00          |
| November 2007  | £325,745.28          |
| December 2007  | £309,414.10          |
| January 2008   | £1,015,259.30        |
| <b>Total</b>   | <b>£1,935,618.68</b> |

# Capacity Neutrality – Net Cost/Revenue: 01/04/07 – 01/01/08

---

|                               |                     |
|-------------------------------|---------------------|
| DSEC/DAI Revenue              | -£1,628,726.38      |
| Buy back costs                | +£0.00              |
| Capacity Management Agreement | +£1,935,618.68      |
| Overrun Revenue               | -£563,746.02        |
| <b>Net Revenue</b>            | <b>-£256,853.72</b> |