

Gas Monthly Winter Update
February 2010

Gas Supply Build Up.....Page 2

Gas DemandsPage 2

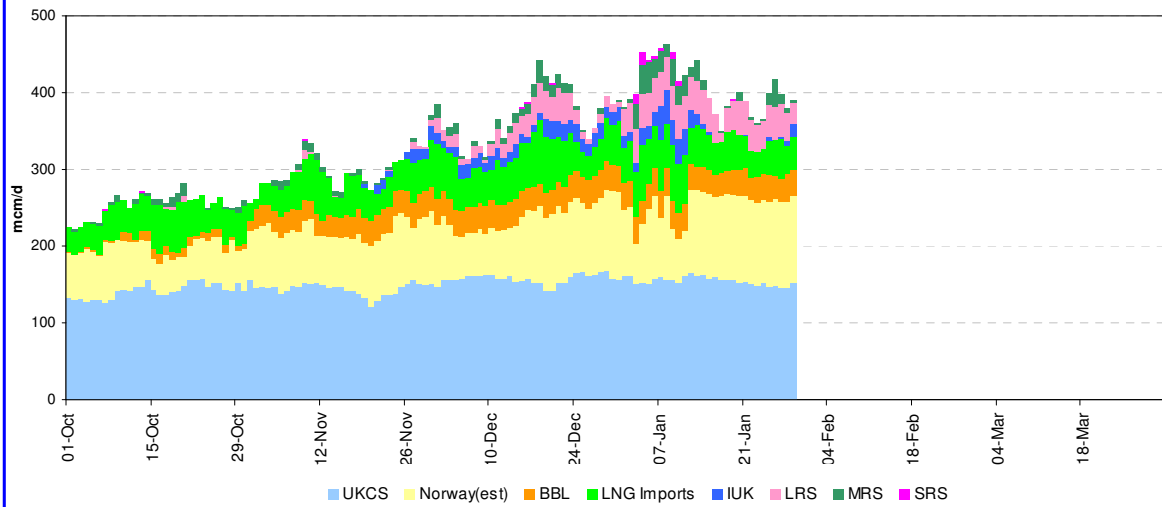
UKCS Monitor.....Page 3

Import & Storage Assessment.....Page 3

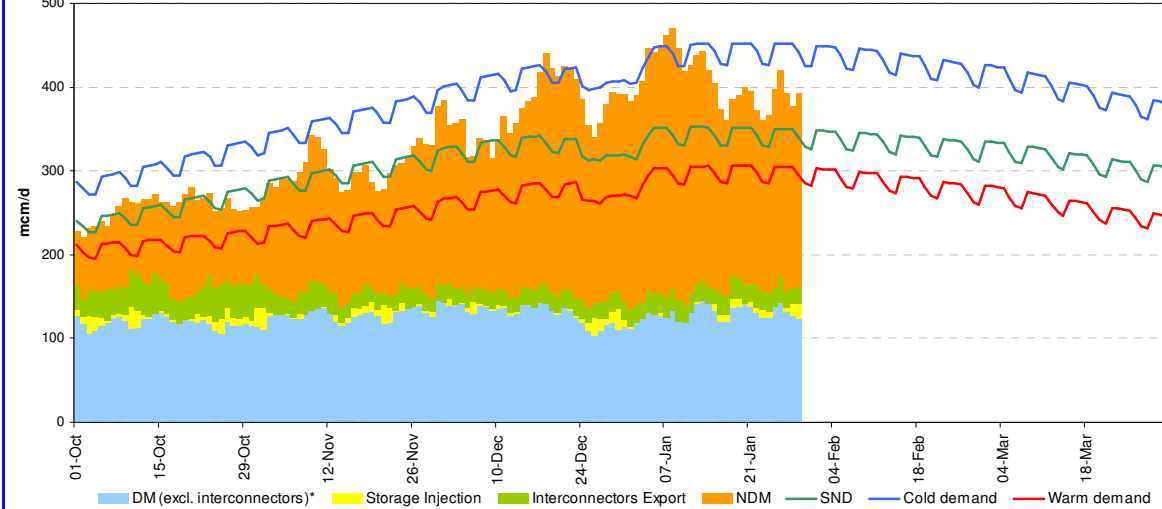
Gas Price vs IUK & Storage.....Page 4

Glossary.....Page 5

Gas Supply Build Up - 1st Oct 2009 to 31st March 2010



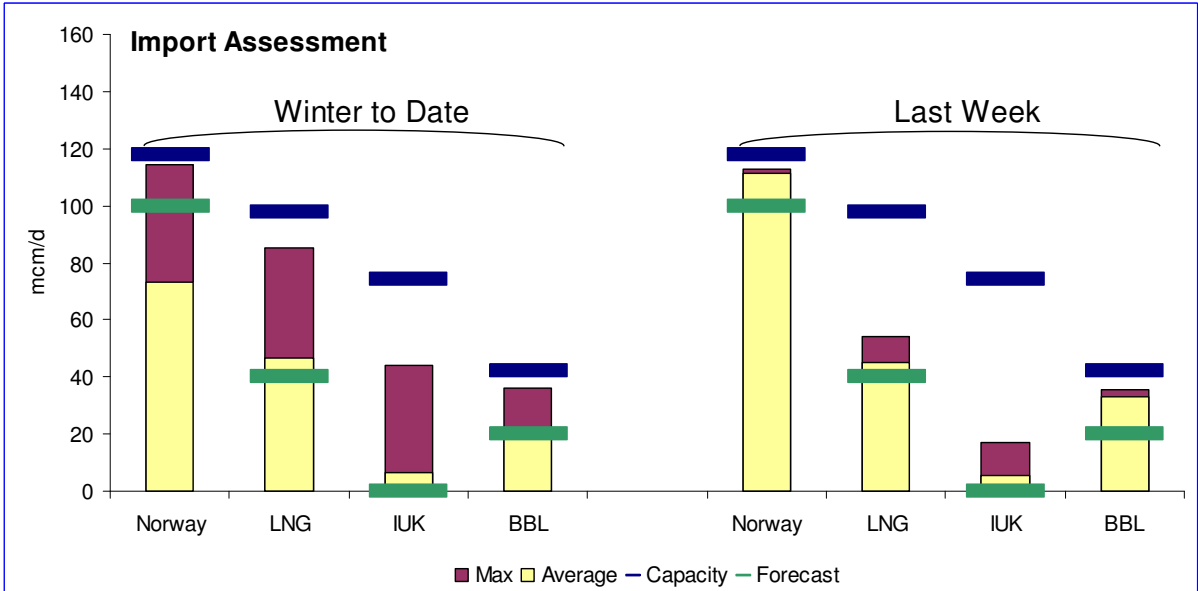
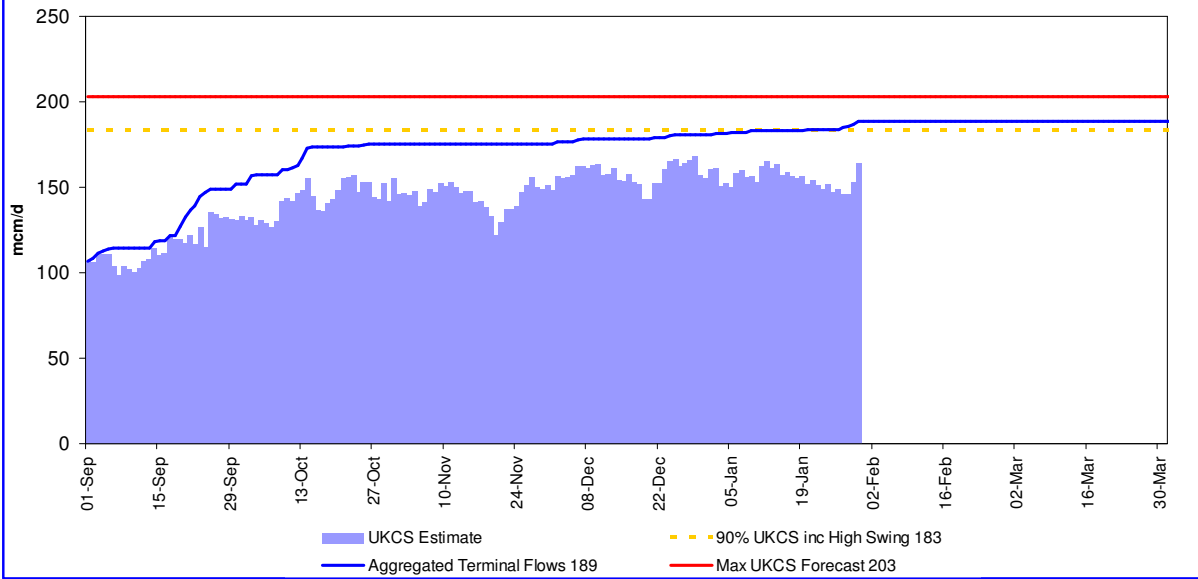
Gas Demands - 1st Oct 2009 to 31st March 2010

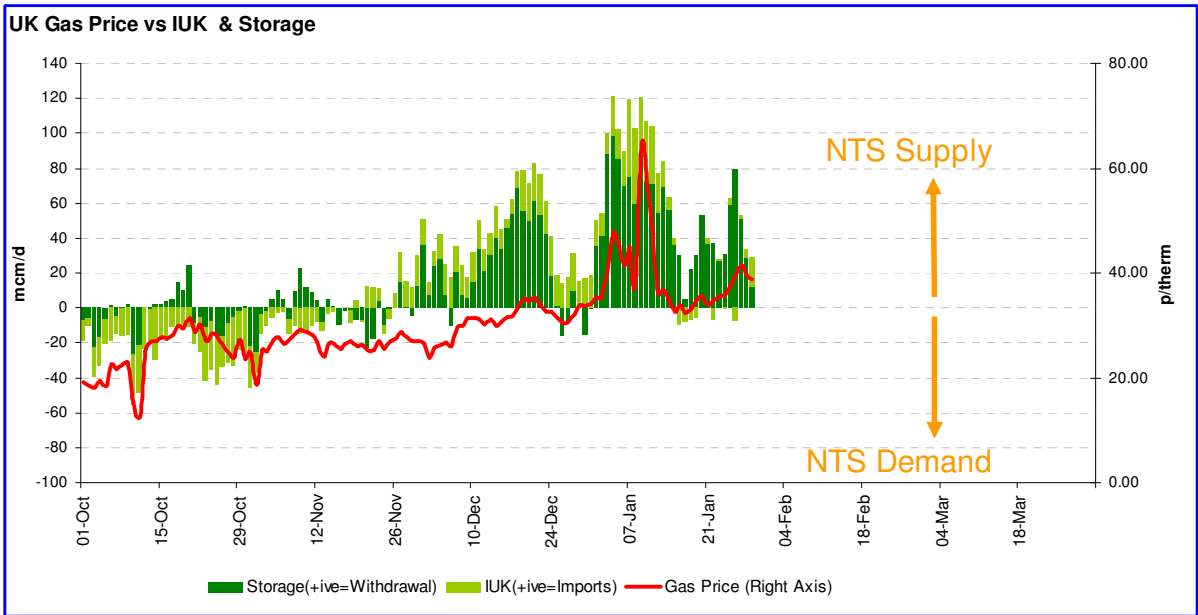


Please Note: The information that is provided within Fig 10 may differ from other sources of demand data due to timing of source data, CV conversion, and data definitions.

SND/ Cold/ Warm are inclusive of IUK Exports / Storage Injection

UKCS Monitor (excludes Vesterled/Tampen estimates)





Glossary

Gas Supply Build-up

- All historic outturn data - from 1 October to present
- Gas Supply Build-up: shows UKCS, Norway (Vesterled (estimate), Langeled and Tampen Link), interconnector supply (IUK and BBL), LNG imports (IOG and Milford Haven when operational) and withdrawal from storage (LRS, MRS and SRS). All in mcm/day. Exports to Europe and injections into storage are not shown.

Gas Demand (Actual, Normal and 1 in 20 weekly cold and Warm)

- Exports to Europe and storage injection are included in the Cold, Warm and Normal curves.
- Daily seasonal normal demands are the demands that are forecast to occur in seasonal normal weather based on the weather between October 1987 and September 2004.
- Cold and warm demand profiles are calculated from the demand models and cold and warm CWVs calculated from weather data from October 1928 to September 2006.
- The cold/warm curves are 1 in 20 weekly values
- Actual demand is shown broken down into storage injection (LRS, MRS, SRS), Interconnector export (IUK), LDZ Non Daily Metered (LDZ NDM) (smaller Distribution Network demands including domestic, commercial and smaller industrial) and Daily Metered (DM) (mainly large industrials and power station demand).

UKCS Monitor

- Shows actual UKCS performance to-date this winter with a view of expected maximum UKCS performance.
- Proven: shows the aggregate of maximum daily UKCS terminal flows to date. This should increase as the winter progresses.
- UKCS Estimate (number): Daily UKCS gas flows (Estimated Norwegian flows from Vesterled and Tampen have been deducted) with the maximum seen so far noted.
- Max UKCS Forecast: Our 100% UKCS forecast (maximum capability).
- 90% UKCS: Gas levels which may be available under high demand or price conditions.
- "High Swing": Additional gas which may be available, if prices or demands are sufficiently high

Import & Storage Assessment

- Max to Date: Maximum flows observed this winter.
- Avg to Date: Average flows observed this winter.
- WCR: Winter Consultation Report view on anticipated supplies.
- Capacity: Maximum theoretical capacity.

UK Gas Prices vs IUK & Storage

- Stacked bar chart showing pipeline net import/export flows to and from UK and storage injection/ withdrawal (left-axis).
- Imports shows net flows to and from UK's only bi-directional interconnector, the Belgian Interconnector IUK. (+ive implies imports to UK, -ive implies exports from UK.)
- Actual storage includes LRS, MRS and SRS: -ive implies injection from NTS (NTS demand), +ive implies withdrawal into NTS (NTS supply)
- UK gas prices (right axis) shows actual on the day gas price (System Average Price (SAP)) in p/therm.